

Projects > Monogrammed Dining Room Table Set

Brother's Pacesetter BES Monogramming Suite includes monograms, decorative accents, and frame designs to suit any style of home décor. This set features a traditional three-letter monogram with a beautiful frame design highlighting the letters. You can personalize your dining area by making this set fit your own decorating scheme. This software program is so easy to use you'll find yourself wanting to decorate every room in your home with custom monograms! You can make spectacular gifts for everyone on your list with the Pacesetter BES Monogramming Suite. In addition, you can use this software program to merge and edit designs from sources such as the Brother ibroidery.com design download center. See our ideas for a Wedding Style table topper. You'll find more information at the end of these instructions.

Materials and Supplies

- [Brother Pacesetter BES Monogramming Suite](#)
- [Brother Sewing and Embroidery Machine](#)
- [Brother Embroidery Threads](#)
- [Brother Bobbin Thread](#)
- [Brother Walking Foot](#) (Recommended for attaching the ribbon trims.)
- [Brother Stabilizer](#)
- Home décor fabric measuring 55 inches square for Tablecloth. NOTE: Adjust size and calculate yardage for your specific table size.
- Commercial pattern for dining room chair cover.
- Home décor fabric as per yardage requirements for each chair cover.
- Approximately 1 yard additional home décor yardage, for making napkin rings, candle garter, and accenting placemats.
- Polyester satin ribbon color #1 - 7/8- inch wide, purchase enough yardage to trim hem of tablecloth.
- Polyester satin ribbon color #2 - 1/2-inch wide, purchase approximately 2 yards to trim each place setting.
- Polyester satin ribbon color #1 - 7/8- inch wide, one piece measuring 49-inches long for center of candle garter.
- Polyester satin ribbon color #2 - 1/2-inch wide, two pieces measuring 49-inches long for trimming edges of candle garter. One piece measuring 36-inches long for drawstring.
- Coordinating pre-purchased placemats and napkins for each place setting.
- Purchased 3-4-inch diameter candle and coordinating candle chimney.
- Basic sewing notions, including sewing thread to match fabric.



NOTE: Supplies listed above include materials for a tablecloth, chair covers, placemats, napkins, napkin rings, and a candle garter for a centerpiece.

Designed exclusively for you from the
Brother Education Department

brother.
at your side

Projects > Monogrammed Dining Room Table Set

Instructions For Creating The Featured Monograms

1. Open BES Monogramming Suite. Click on the drop down arrow under the hoop icon to select the desired hoop size. This example features the 6-inch by 10-inch hoop. *See **Figure #1**.
2. To create a three-letter monogram with a frame, click on the Monogram Designer tool. *See **Figure #2**.
3. Create the design as follows:
 - Press the Caps Lock key on your keyboard. Scroll down to select the traditional three-letter monogram style.
 - Select Serif for the font. Change the font height to 2.5-inches. Type desired letter for text one, two, and three.
 - To change the thread colors for each letter, click on the color box next to the letter, select the new color, and then click Import to change the color. *See **Figure #3**.
 - Click Apply to finish the monogram. To add a frame to the monogram design, click on the frame placeholder. *See **Figure #4**.
4. A list of frames appears on the right side. Click on the first frame, Motif No. BMF-BD-0001. Click OK. *See **Figure #5**.
5. Click on a blank area of the design page to *de-select* the grouped design. Next, click on a segment of the frame design. Notice that only the selected segments of the frame design are highlighted in the Sequence view. Place the mouse cursor on one of the four corners of the frame design. Click and drag to resize the frame until it equals approximately 7.5-inches wide. Change the thread colors of the frame design by clicking one at a time in the sequence view, and then selecting the new color from the color bar. Finally, to minimize thread changes, click on the color sort icon. Save the file in the .pes format. *See finished design in **Figure #6**.

NOTE: It is possible to edit individual letters as well as the frame. Simply click on letter or segment to select it. Change color, size, position, etc., as desired.

5. To create a second design featuring only the three letters, click on the frame to select it, and then press the delete key on your keyboard. Change the hoop size to 4-inch by 4-inch. Save this design file with a different name in the .pes format.

Figure #1

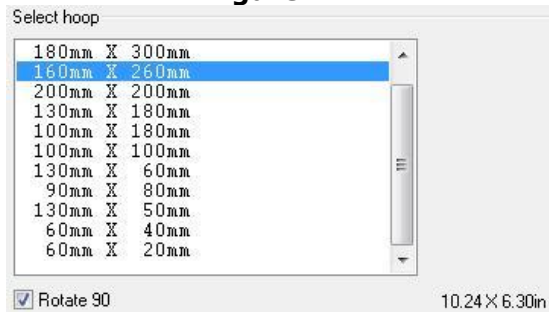


Figure #2



Figure #3

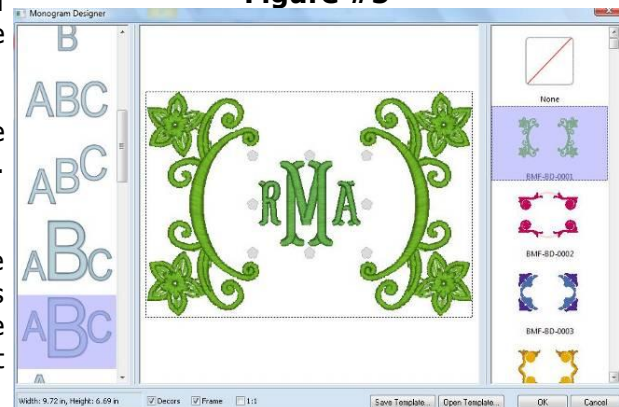


Figure #4



Frame Placeholder

Figure #5



Projects > Monogrammed Dining Room Table Set

Instructions for Monograms

1. Prior to constructing chair cover, embroider the Frame with Monogram design on the chair back area. Construct chair cover as per pattern instructions.
2. Repeat the design on a rectangle of fabric for the center of the place mat. Cut rectangle 2-inches smaller than placemat. To cover raw edges of rectangle *and* attach to placemat in one step, apply ribbon color #2, the 1/2-inch ribbon over the raw edges, topstitching in place.
3. Hem edges of tablecloth fabric. Trim the hemmed edges using ribbon color #1, the 7/8-inch wide ribbon. Embroider the three-letter monogram design, without the frame, in one or more corners of the tablecloth.
4. Repeat the design on each napkin corner.
5. For each napkin ring, cut a 9-inch square piece using fabric remnants. Embroider the three-letter monogram in the center of each square. When finished, cut napkin ring piece to equal 8-inches wide by 4-inches long, having the monogram in the center of the piece. Cut an equal size piece to line each napkin ring.
 6. Construct napkin ring as follows:
 - Select the embroidered piece. Place a length of ribbon along the 8-inch wide top and bottom edge, having the ribbon positioned 1/2-inch from the raw edges. Topstitch in place.
 - Using a 1/2-inch seam allowance, sew short ends of embroidered ring to form a tube. Repeat for lining.
 - Slip one tube inside the other, having right sides together. Using a 1/2-inch seam allowance, sew ring and lining together along the top edge.
 - Turn right side out and pull the lining to the inside of the ring. Press under 1/2-inch along the remaining raw edges of the napkin ring and lining. Close the bottom seam with hand stitching or machine topstitching. *See finished napkin ring in **Figure #7**.
 7. Create a coordinating garter for a candle ring as follows:
 - Cut a strip of fabric from remnants, measuring 5-inches wide by 48-inches long. Hem both long edges using a 1/2-inch hem allowance.
 - Trim each long edge with a piece of 1/2-inch wide ribbon.
 - To make a drawstring casing, select the 7/8-inch wide ribbon. Press under 1/2-inch on each short end. Place ribbon in the center of the strip and top stitch close to the edges, leaving the short ends open.
 - Insert the 36-inch long piece of ribbon through the center. Pull and tie to fit around the candle chimney.

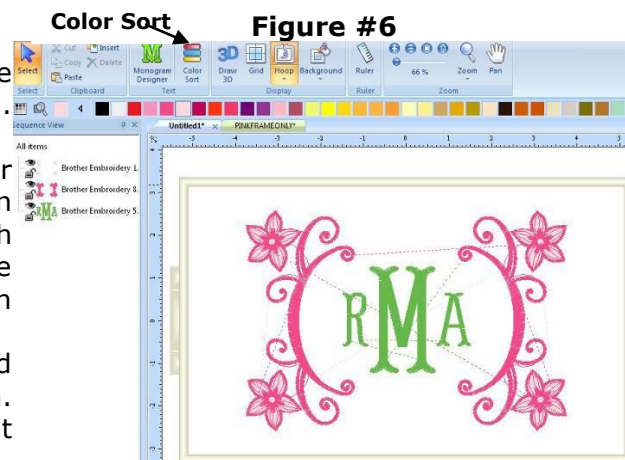


Figure #7



Figure #8

Ideas and Options for a Wedding Set:

- Follow the general directions in this project to create chair covers, a table topper and a candle garter for display on the wedding table. Consider using some of the design options below to further customize these items for the Bride and Groom.
- Use the basic instructions for creating the monogram design, modifying the design by eliminating the center monogram. Then, use the Monogram Wizard to generate names of the Bride and Groom instead. Note that you will need to generate one name at a time, returning to the Monogram Wizard for the second name. Next, merge in a special wedding design downloaded from ibroidery.com. *See Figure #8. We used the following design from ibroidery.com:



edpr10 086

- For yet another option, use the software to create a three letter monogram and then merge wedding designs to create a border around the monogram. You can use the software to resize designs, rotate designs, copy and paste multiple designs and more! There are so many options for creating design combinations with Brother software and embroidery designs from the Brother [ibroidery](http://ibroidery.com) download center. *See Figure #9.



edpr10 088



edpr10 087

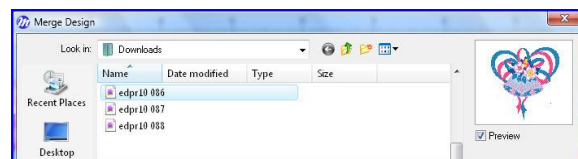
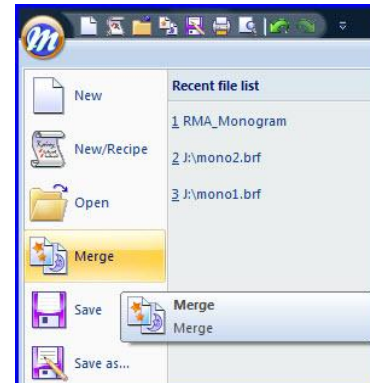
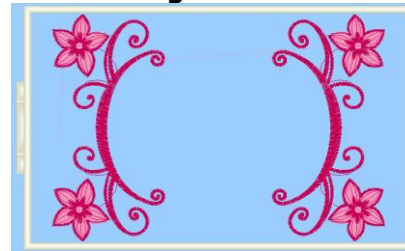


Figure #9

