

## Tutorials > Creating a Photo Stitch from a picture

Photo Stitch™ designs are fun and a great way to preserve memories. A few hints: the subject should be clear in the picture. A busy picture with lots of background going on does not translate well into a Photo Stitch™.

Minimum size is 4" X 4" for a head only shot and 5" X 7" for a head and shoulders shot.

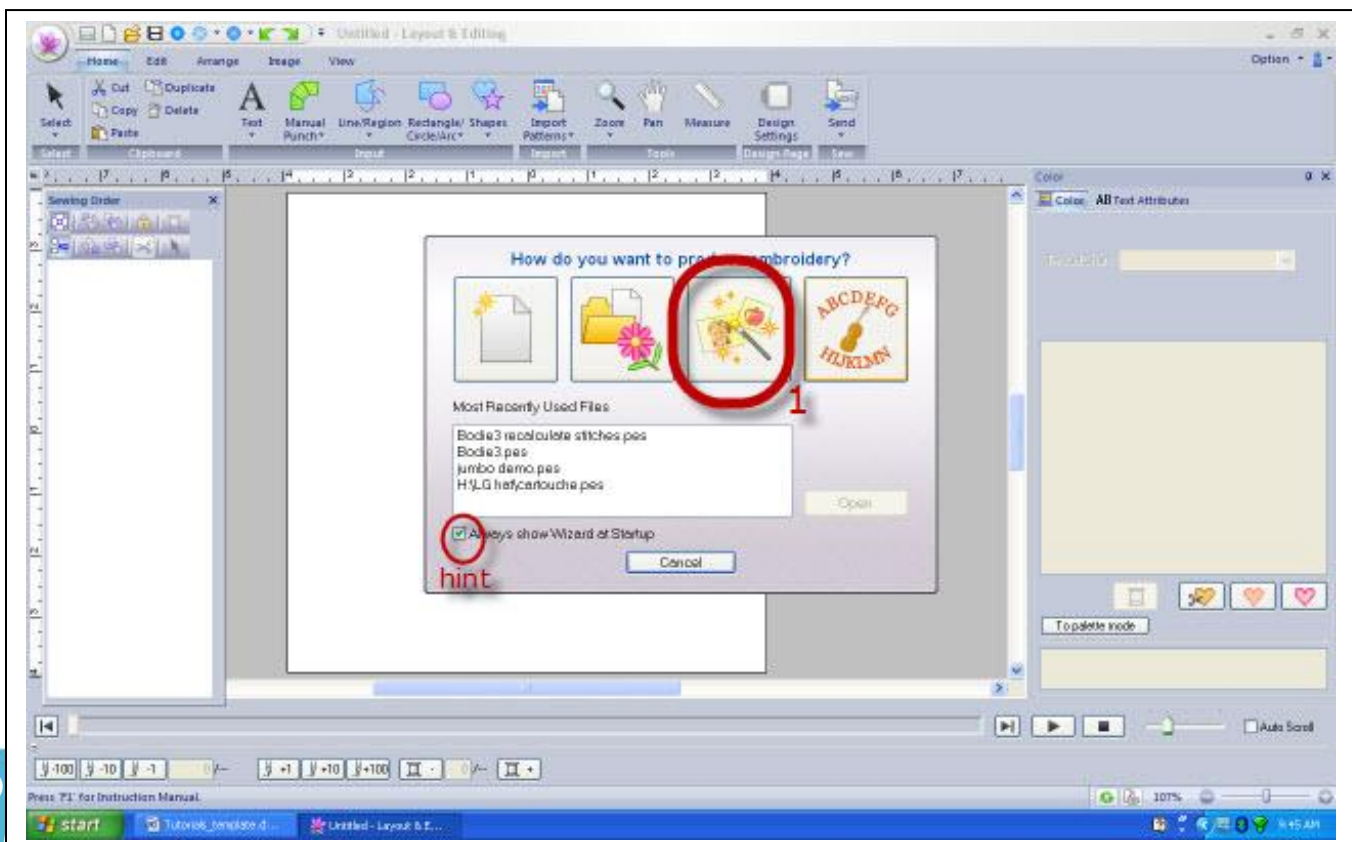
Landscapes are possible if the original image is sharp and in focus and the subject is clear. Many "mask" shapes are possible in PE-Design to eliminate sewing the background if desired.

As with all areas of a software program- there is often more than one way to achieve desired results.

### Materials and Supplies

- PE-Design Next software
- Brother Embroidery Machine

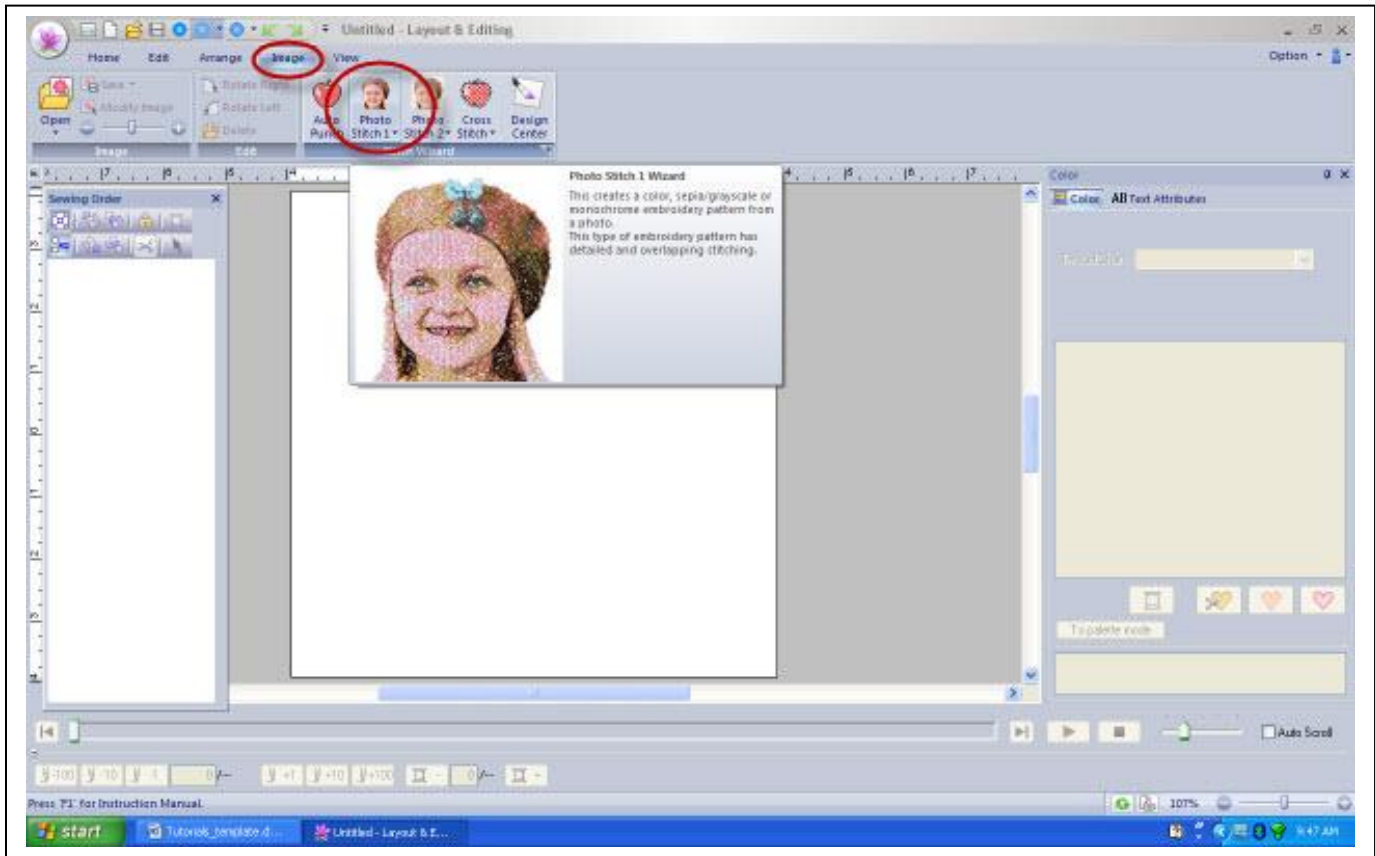
1. Click on Layout and Editing. When the program first opens the "How Do You Want to Produce Embroidery" box appears. Select the **Stitch Wizard** box and window to **My Pictures** opens for selection of photo.



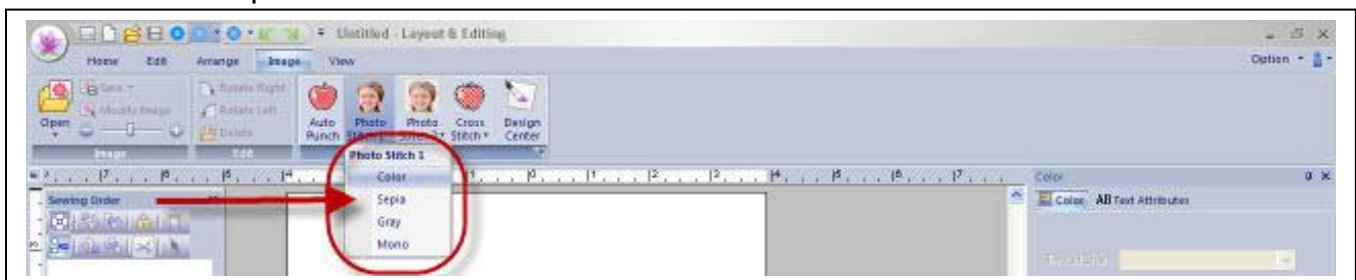
## Tutorials > Creating a Photo Stitch from a picture

**HINT:** You can remove the check mark so that this box does not appear when you open PE-Design.

1B. If **Layout and Editing** is already open you can access the **Stitch Wizard** by clicking on the **Image** tab on the top toolbar and for this exercise choosing **Photo Stitch 1**.

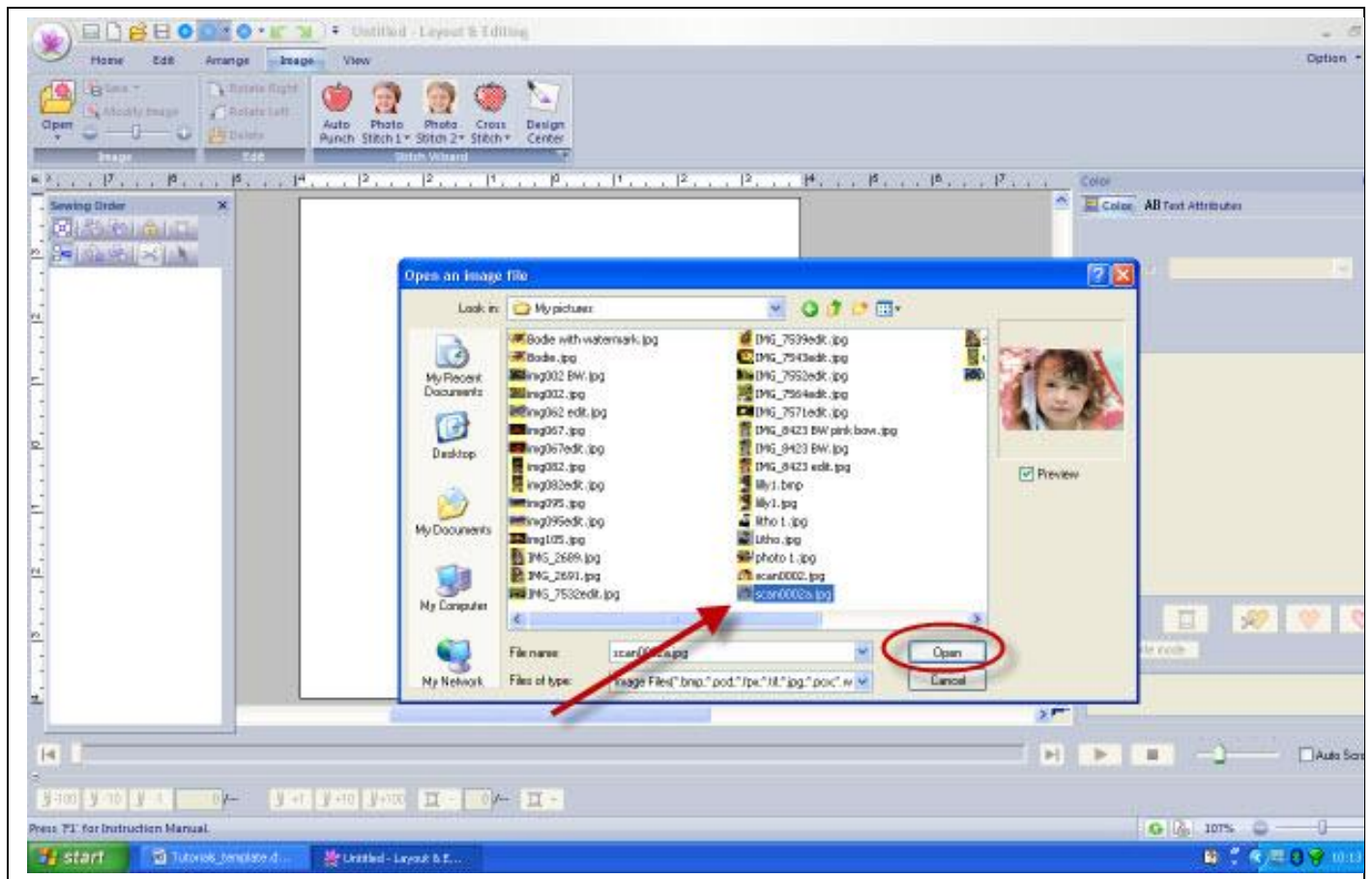


From the drop down box select **Color**.



## Tutorials > Creating a Photo Stitch from a picture

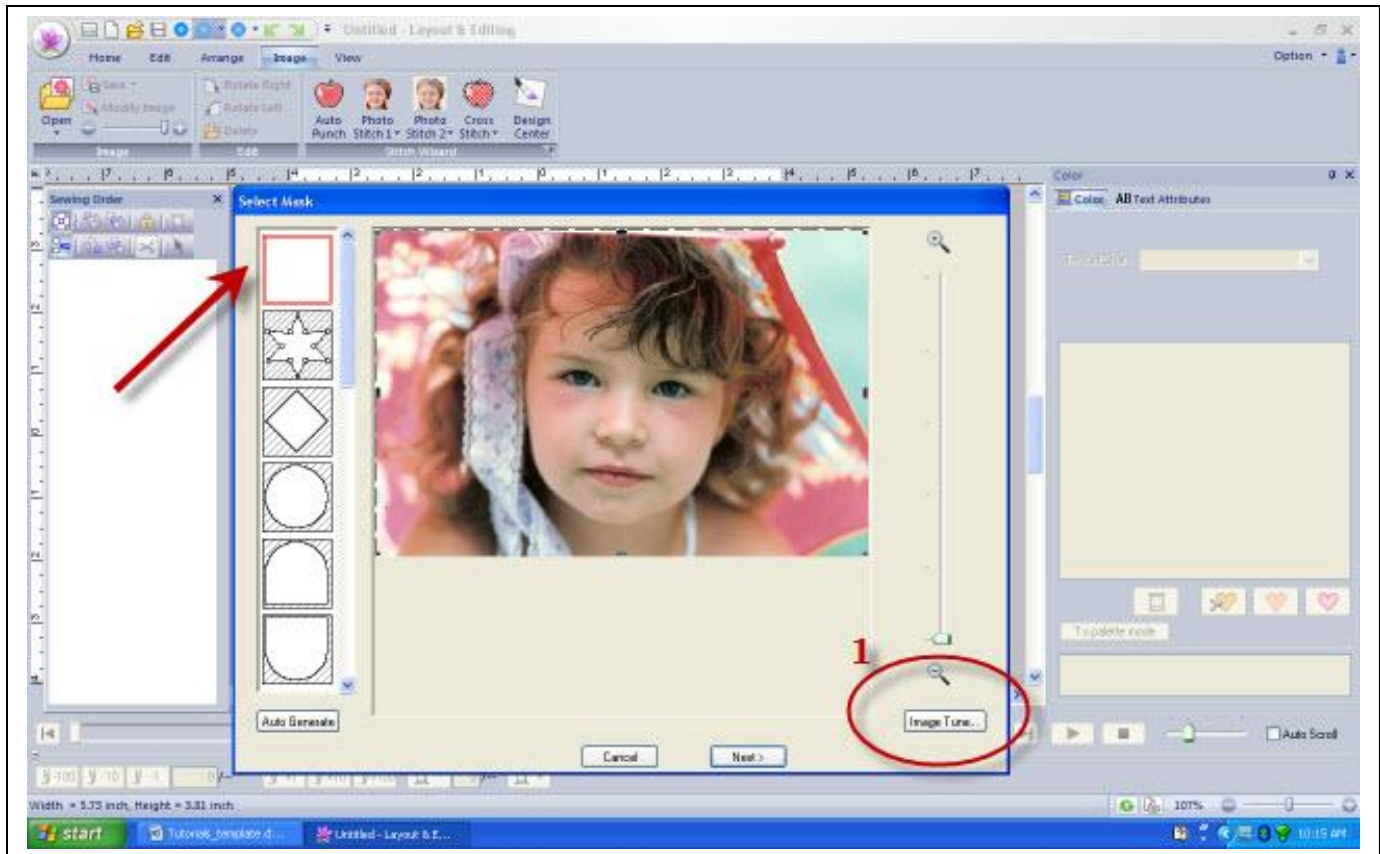
2. Find your desired photo and click Open.



## Tutorials > Creating a Photo Stitch from a picture

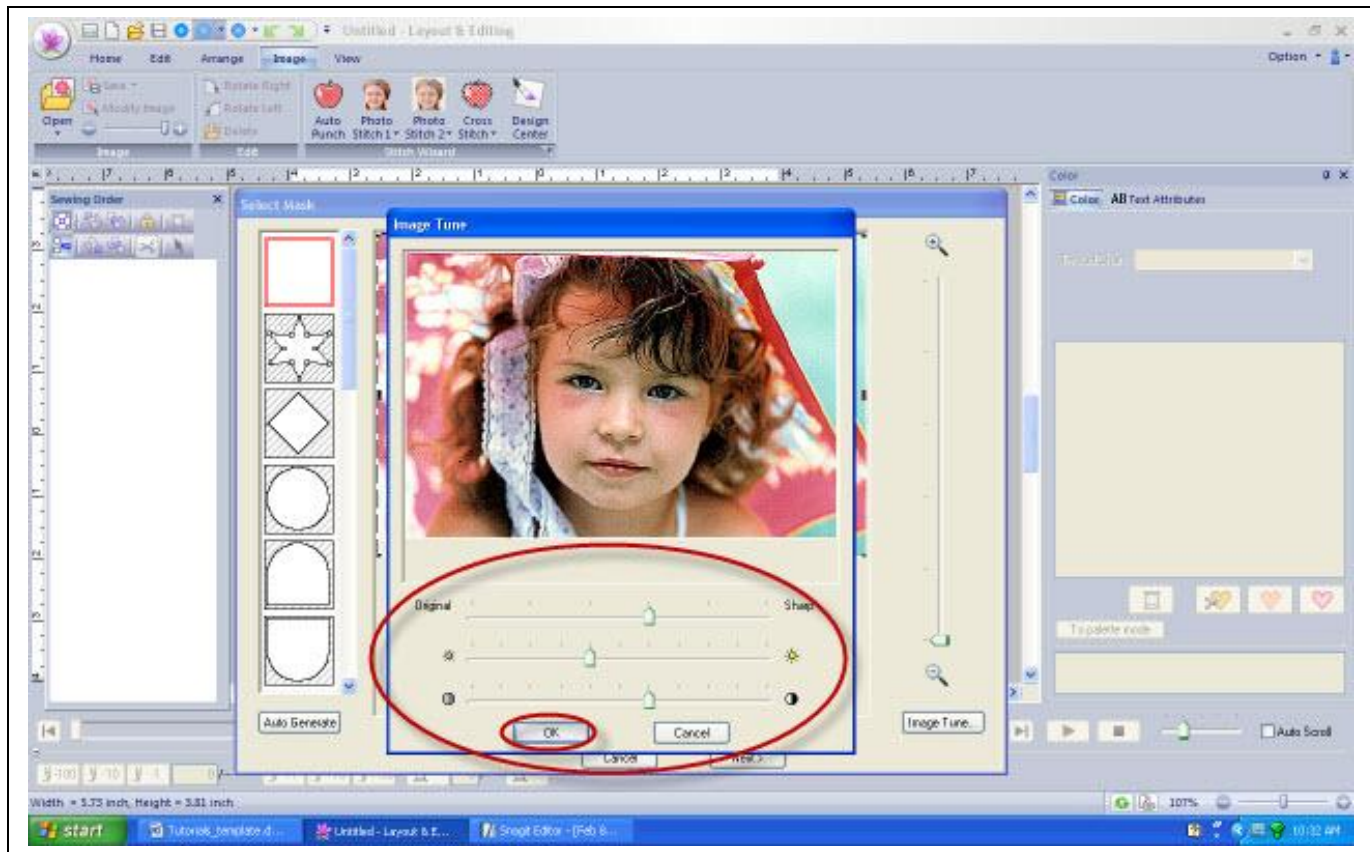
3. These are the next steps:

- Choose a mask shape if you do not want the entire picture to be a design. In this case, we are using the entire picture so the default mask at the top is what was selected.
- Fine tune the image.



## Tutorials > Creating a Photo Stitch from a picture

4. When Image Tune is selected the following box appears:



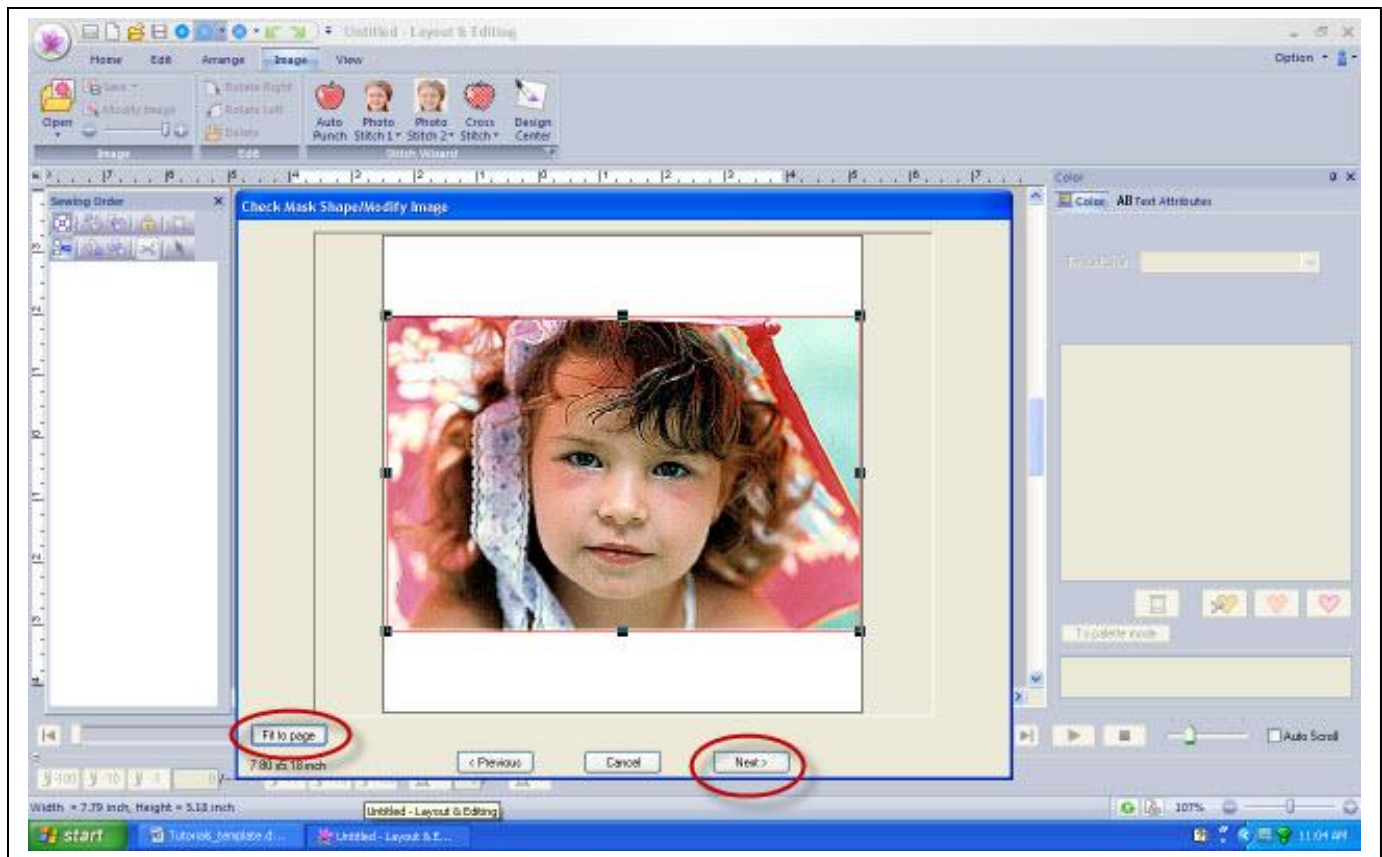
In the sample picture the sharpness was increased, the brightness was left at the default and the contrast was increased. These slight changes allow the Photo Stitch program to detect fine lines.

Select **OK**.

Select **Next**.

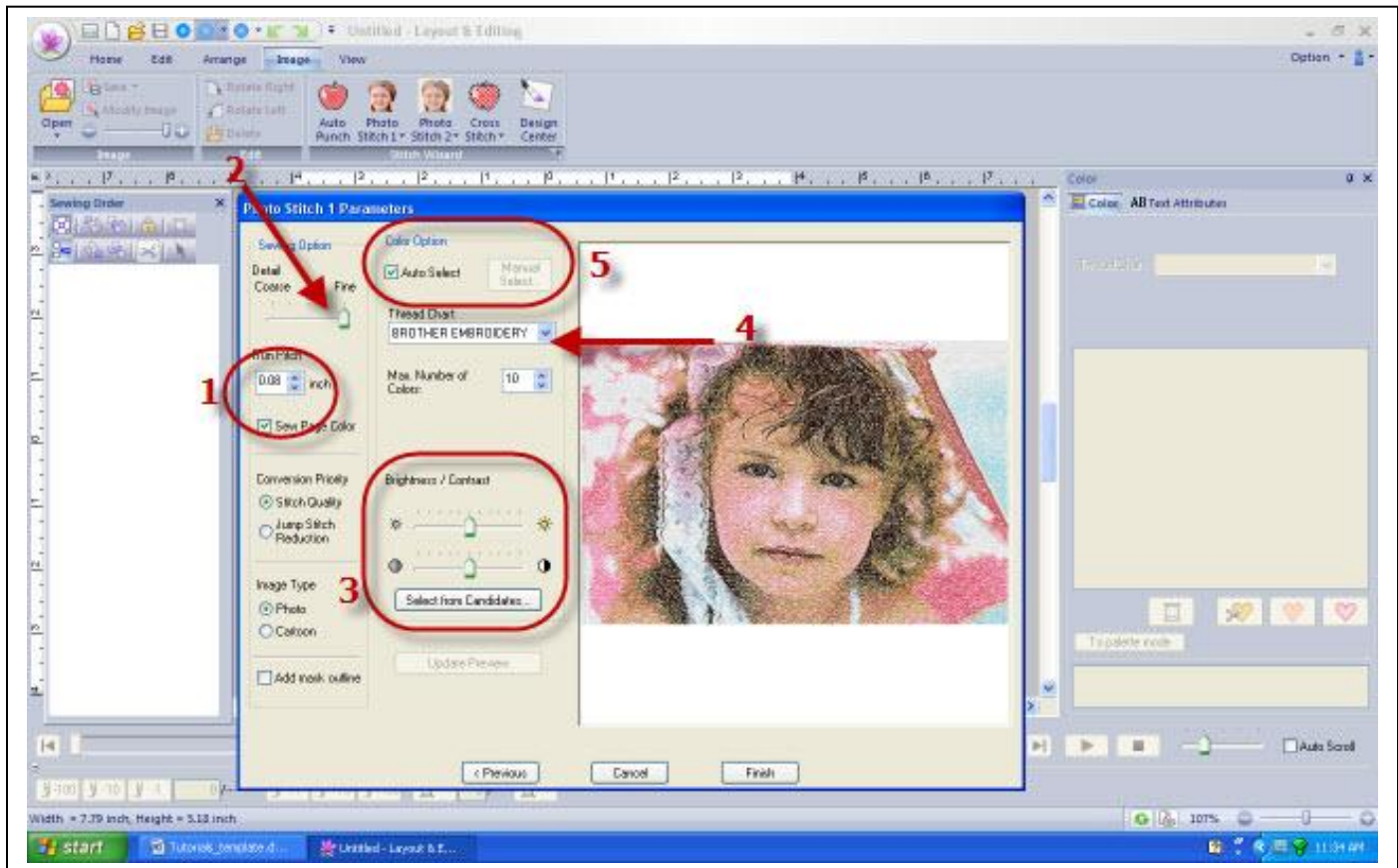
## Tutorials > Creating a Photo Stitch from a picture

5. Select **Fit to Page**. The picture will resize to fit the selected hoop size. In this case the hoop selected is the 8" X 8".



Select **Next**.

6. The **Photo Stitch 1 Parameters** box appears.



Step 1: Reduce the run pitch to 0.08 inches. This allows the program to create very small stitches.

Step 2: Slide the detail all the way to fine. This allows for more detail in the resulting design.

## Tutorials > Creating a Photo Stitch from a picture

Step3: The Brightness/Contrast can be adjusted in 2 ways- **Select from Candidates** allows you to see six different combinations and choose from there- **OR** the Brightness/Contrast can be adjusted manually from this screen and viewed in the larger window by selecting **Update Preview** each time a change is made to either slider bar.



Step 4: Select a thread palette and choose the maximum amount of colors. Photo Stitch sews a design in layers much like a photograph has layers. Adding more than 10-12 colors does not add better detail.

Step 5: If you wish to mix thread brands OR you want to manually select the colors in the design, uncheck the box in front of **Auto Select**.



## Tutorials > Creating a Photo Stitch from a picture

7. This Photo Stitch has a combination of **Brother Embroidery Thread** and **Brother Flesh Tone Thread**. As I add colors to the design the software creates another thread palette for use titled **Brother Enhanced Chart**.



Step 1: Uncheck the box next to **Auto Select**.

Step 2: The box on the right shows the colors that were automatically generated by the software. The box on the left affords you the color palettes to choose from. You can mix color brands. Simply highlight the color from the right box that you wish to delete and click **Remove**. From the left drop down select the thread brand to display and then highlight the color you wish to add and click **Add**.

In this tutorial the same number of colors was maintained. It is possible to add more than the 10 colors.

The editing possibilities are endless. You can continue to **Select From Candidates** OR manually adjust the Brightness and Contrast until the desired results are achieved.

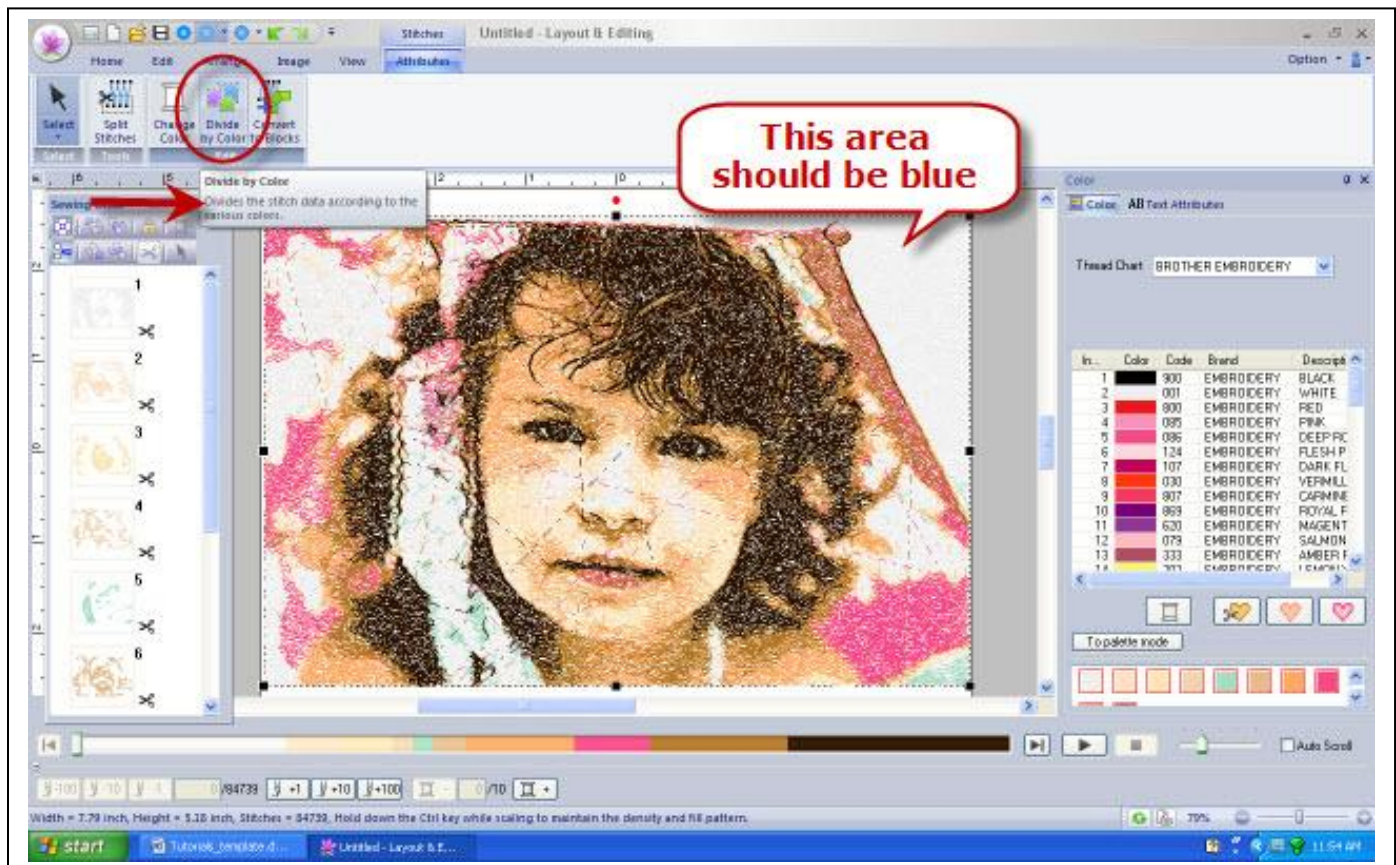
Click **Finish**.

## Tutorials > Creating a Photo Stitch from a picture

8. The finished design will generate into Layout and Editing. The resulting design lacks blue in the upper right corner. I wish to change just that corner to the blue.

The **Sewing Attributes** tab on the top toolbar is selected.

Select **Divide Stitches By Color**.



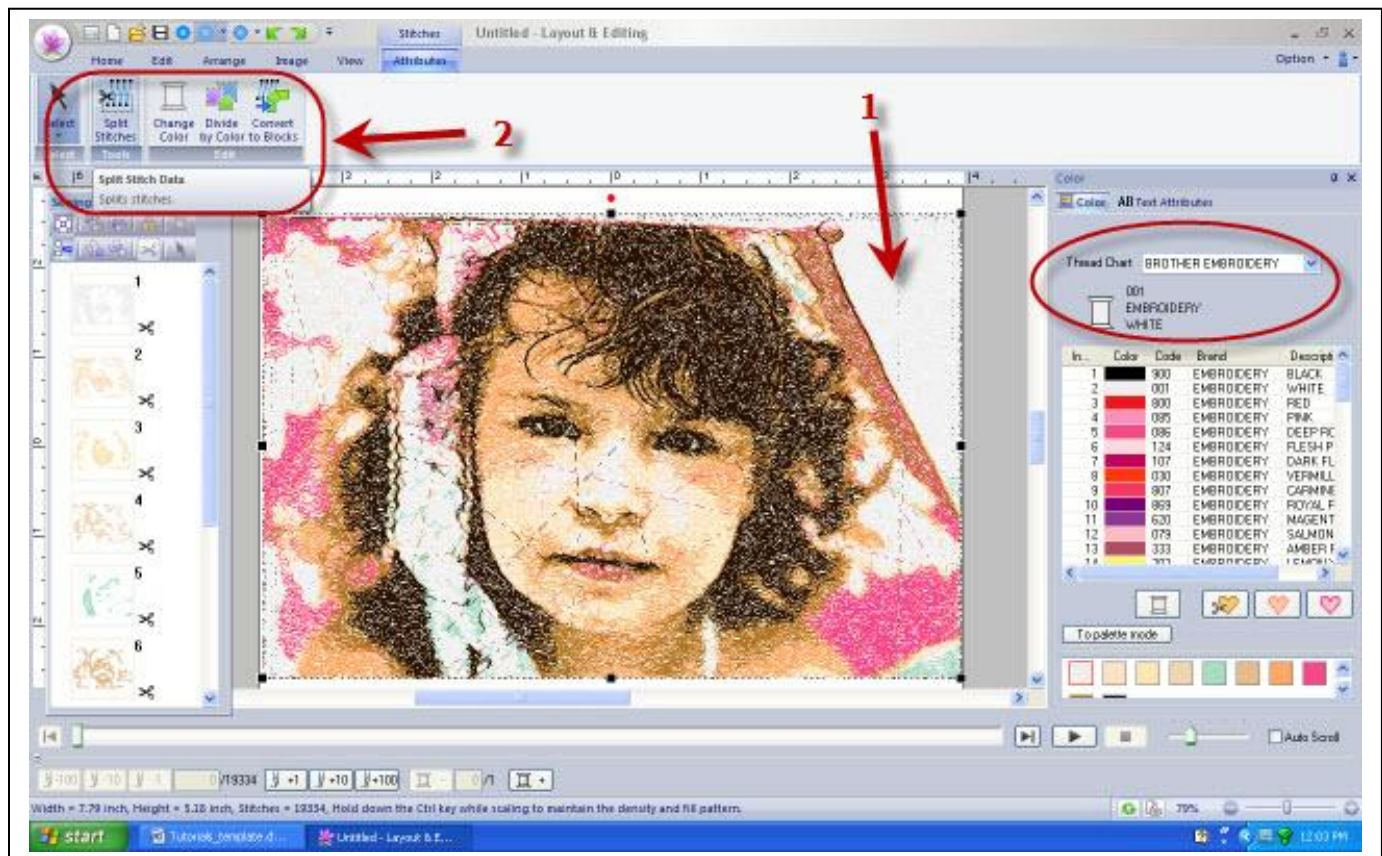
**NOTE:** In the following pictures the white was changed to yellow so the steps can be seen 😊

## Tutorials > Creating a Photo Stitch from a picture

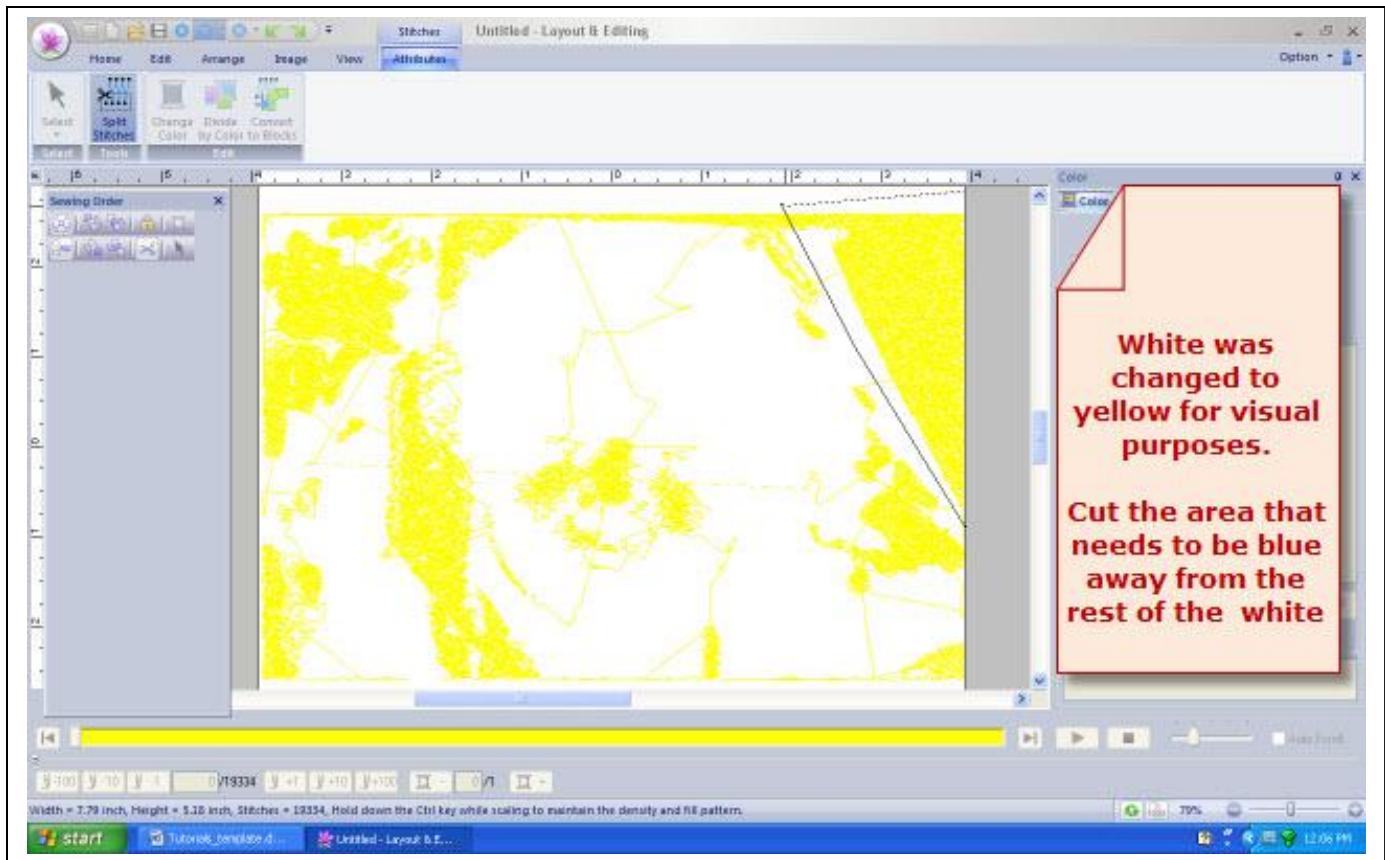
Click in the design field outside the design and then:

Step 1: click on the white part of the design. Looking to the right you can see that the white has been successfully selected.

Step 2: click on the **Split Stitches** tool.



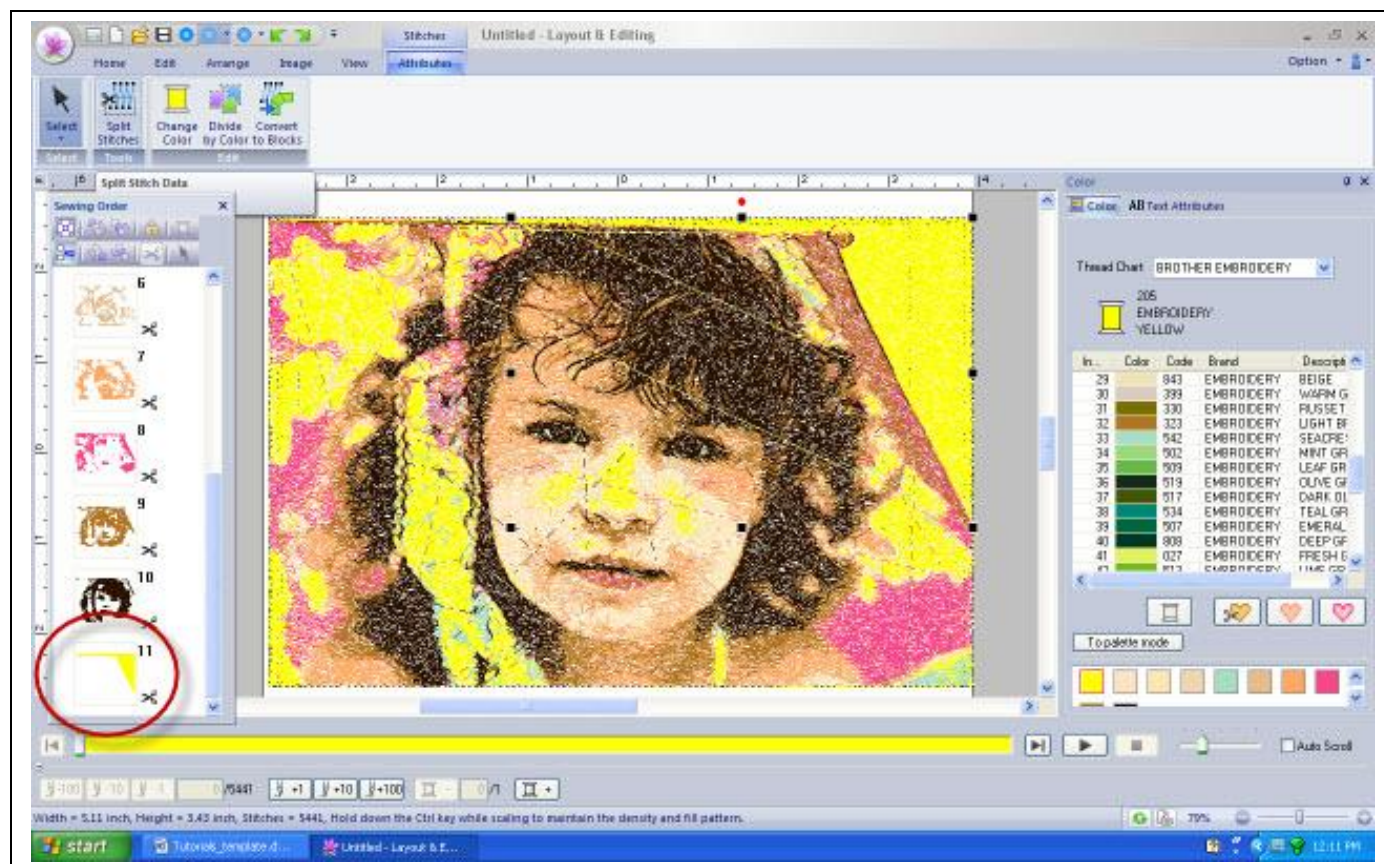
## Tutorials > Creating a Photo Stitch from a picture



Designed exclusively for you from the  
Brother Education Department

brother.  
at your side

## Tutorials > Creating a Photo Stitch from a picture



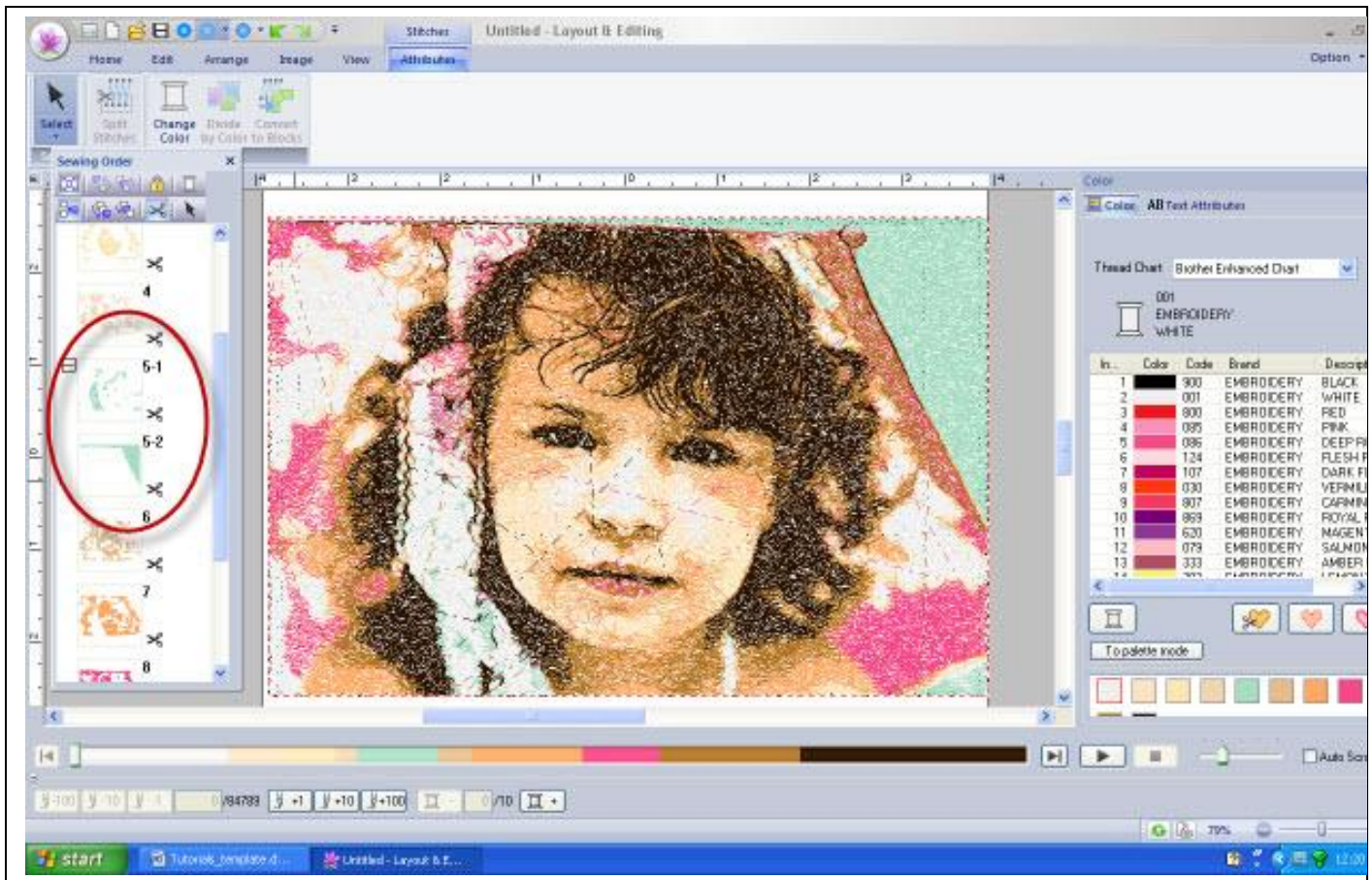
The section that was cut away from the white goes to the bottom of the sewing order. Since this is going to be blue and photo stitch sew in layers, click and drag this small piece up to the blue section and change the color to blue.

Change the yellow back to white.

It is also possible to edit specific points in a photo stitch.

The design is ready to be saved.

## Tutorials > Creating a Photo Stitch from a picture



Designed exclusively for you from the  
Brother Education Department

brother.  
at your side