

Projects > Special Occasion Silver Purse

Our Brother Free Design of the Month is narrow border motif resembling braided trim. This design takes on a special look when stitched with Brother metallic threads and created as a freestanding motif. Learn how to make this design and then use it to decorate a petite purse that's perfect for prom, weddings, and more! You can make this purse for any special day or night out.

Materials and Supplies

- [Brother Sewing and Embroidery Machine](#) with 5 X 7 hoop.
- [Brother Metallic Thread](#), MT996-Dark Silver
- [Brother Polyester Embroidery Thread](#), Dark Grey #707. Read more about Brother Metallic Thread in our tutorial on [Brothersews.com](#).
- [Brother Bobbin Thread for Embroidery](#)
- [SA541](#) Pacesetter® Lightweight Water Soluble Stabilizer
- [SA161](#) Brother Adjustable Zipper and Piping Foot
- Brother FREE border design. Visit [ibroidery.com](#) for a smaller sized version of this motif.
- Size 11 embroidery needle for embroidery.
- Size 12 sharp machine needle for sewing purse.
- Silver tissue lame, two pieces measuring 8 ½-inches wide X 11-inches long for purse front and back. One piece measuring 2-inches wide X 15-inches long for purse strap.
- Lightweight interfacing compatible with tissue lame.
- Light grey lining for inside purse, two pieces measuring 8 ½-inches wide X 11-inches long. Select a lining fabric with no visible right or wrong side
- Sheer silver polyester organza, two pieces measuring 9-inches wide by 12-inches long. We used this fabric as a base to create the freestanding border design.
- 7-inch light grey standard zipper.
- Basic sewing notions including thread to match or blend with fabrics and trim. Seam Sealant may be necessary for treating organza.
- Optional: Bias tape for finishing seam allowances. Ribbon or pre-purchased tassel for zipper pull.



Finished size of purse 7-inches X 6 1/2-inches

Figure #1



Figure #2



Instructions for Creating the Embroidery Motifs

1. Layer fabric for embroidery as follows: One layer of wash away on the bottom, followed by two pieces of sheer organza fabric, with a final layer of wash away on the top. Hoop the four layers together in the 5-inch X 7-inch hoop.
*See **Figure #1**. Transfer the free design to the machine. Stitch the design using the silver metallic for the first color and dark grey for the second color. Stitch a second design.
*Please read the note below for more instructions. After stitching both motifs, remove fabric from hoop and trim, leaving a small margin of stabilizer and organza around each design. *See **Figure #2**.

Designed exclusively for you from the
Brother Education Department

brother.
at your side

Projects > Special Occasion Silver Purse

***NOTE:** The default position for the design is stitched in the center of the hoop. Because this is a narrow design there is plenty of room to stitch a second motif without re-hooping. To stitch the second motif simply re-select the design and then use the arrow keys to move the motif to the far left or far right of the 5 X 7 hoop. If you have Edit Mode capability you can add the second design in the layout screen and stitch both designs together. *See **Figure #3a**. Without Edit Mode, you cannot add the second design into the layout. However, you can still stitch a second design by re-selecting the motif and then moving it to the left or right side of the previously stitched design. **Tip:** You can see that there is room to stitch yet another motif on the opposite side of the hoop. Consider making a third motif to decorate a coordinating item such as a headband or similar hair accessory.

2. Dissolve the stabilizer as directed on the package. Let pieces dry. Press pieces flat. Use sharp scissors to trim close to the edge of the design, trimming away excess organza. If your organza ravel considerably, you can treat the edges with seam sealant. After sealing, let dry and then trim away loose threads. Set embroidered pieces aside for later use. *See **Figure #3b**.

Instructions for Zipper

1. Apply interfacing to wrong side of purse front and back. Select one of the pieces to use for the front. Place the zipper face down along the upper short edge, centering it from side to side and having the zipper tape even with the raw edge of fabric. Set the machine for sewing. Use the adjustable zipper foot to stitch approximately 1/8-inch away from the zipper teeth. You need the stitching to be close to the teeth, but not too close, as this can make opening and closing the zipper difficult. In addition, it is recommended to pin, and then hand baste the zipper prior to stitching. This method makes sewing the zipper much easier. *See **Figure #4a** and **4b**.
2. Select the back purse piece. Repeat step one, sewing the opposite side of the zipper to the top edge of the purse back. When viewed from the right side your zipper insertion should resemble the photo below.

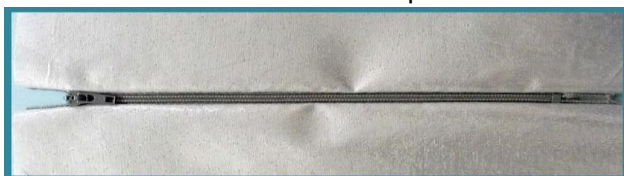


Figure #3a



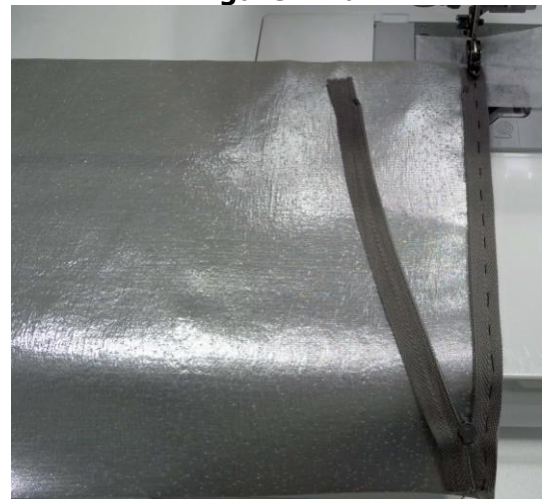
Figure #3b



Figure #4a



Figure #4b



Projects > Special Occasion Silver Purse

3. Attach the lining to the zipper as follows:
 - Place a piece of lining on a flat surface. Flip the front and back purse pieces so the right sides face together. In the illustration you can see the wrong side of the purse fabric with the interfacing attached. To attach the first lining piece to the zipper tape, sandwich the zipper tape between a layer of lining and one layer of the purse fabric. *See **Figure #5a**. Observe the previous stitching line from attaching the zipper to the purse piece. *See **Figure #5b**. Having the interfacing side facing you, pin and then stitch, stitching directly on top of the previous stitching. *See **Figure #6**. Repeat this process to sew the second piece of lining to the opposite side of the purse.
 - To anchor the lining in place on each side of the purse, flip the lining away from the zipper and then topstitch close to the edge. This topstitching should form through the lining and the zipper tape only; take care to smooth the purse fabric out of the way. *See **Figure #7a** and **7b**.
4. Change to the standard sewing foot. Lay the purse pieces flat, lining up raw edges of both purse and lining. Pin, and then anchor the layers together by stitching $\frac{1}{4}$ -inch from all raw edges. See Below.

Figure #5

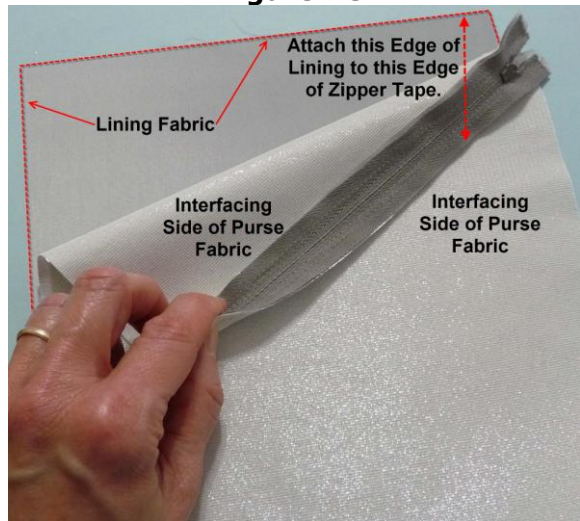


Figure #5b

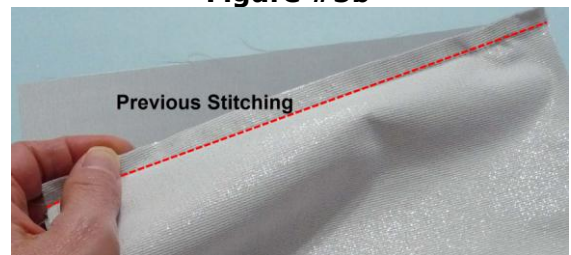


Figure #6

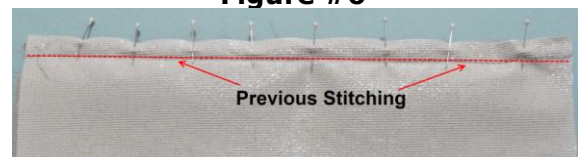


Figure #7a



Figure #7b



Projects > Special Occasion Silver Purse

Instructions for adding Embroidered Trim

1. Mark the precise center of the purse on the front and back, beginning ½-inch from the bottom edge and ending ½-inch from the zipper edge. Set the machine for a basting stitch. To form gathering lines, stitch alongside the lines as follows: Beginning at the bottom edge, sew the basting stitches ¼-inch from the marked line, pivoting at the top edge to sew ¼-inch from the opposite side of the marked line and continuing back to the bottom.

*See **Figure #8**.

2. Pull up the gathering stitches to equal the length of the embroidered trim. Center the embroidered trim pieces on both the front and back of purse. Stitch close to the edge of trim, securing it to the purse. For this step we used monofilament thread in the needle and ordinary sewing thread in the bobbin. With the zipper tab on the left, observe that one section now becomes the front of the purse and the opposite section becomes the back. See Below.

Purse Back



Purse Front

Purse Back



Purse Front

3. To create the strap, fold and press under ½-inch on each long edge. **Tip:** For an easy way to do this, first sew ½-inch from the raw edge, and then press along the stitching line. Next, fold the strap in half lengthwise. Edge stitch close to each long edge. Criss-cross the ends and pin temporarily. Place the strap close to the top of the purse back. Having raw edges even, stitch strap in place, ¼-inch from the raw edge. *See **Figure #9a** and **9b**.

Figure #8

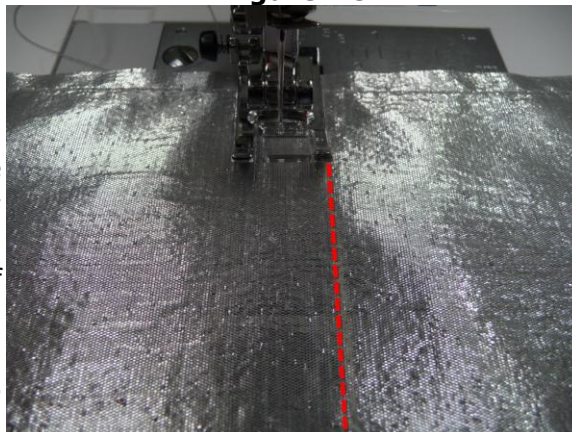


Figure #9a

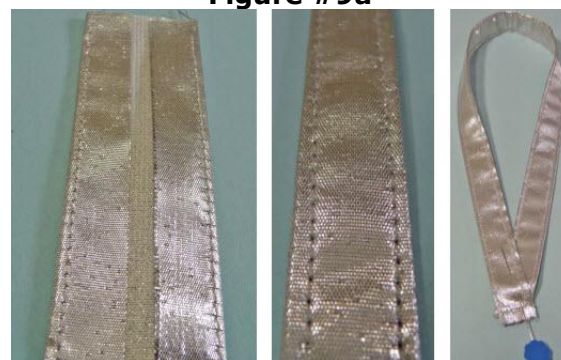


Figure #9b



Projects > Special Occasion Silver Purse

Instructions for Finishing Purse

1. In preparation for gathering and sewing the side seams, sew a line of basting stitches 1/2-inch from each raw edge. With the purse front facing you, fold the purse, having right sides together and the zipper teeth located approximately 1/2-inch from the top edge. In this step part of the purse back is transferred to the front so the zipper is located on the front of the purse. This will be obvious when the purse is completely finished and turned right side out. Pull the threads, gathering sides to equal the same size as the center of the purse. It is necessary to gather the front more than the back to make the sides even.
2. Pin gathered side seams. Reach in through the open bottom and open the zipper half way. *See **Figure #10a**. Sew sides using a standard stitch length and a 1/2-inch seam allowance. *See **Figure #10b**. Note: When sewing side seams, take care that there is no gap in the area of the zipper tab and the zipper stop. Also make sure you do not sew too close to any of the metal zipper parts. Finish raw edges with an overcast stitch or binding.
3. Sew bottom seam using a 1/2-inch seam allowance. Finish raw edge as you did for step 2.
4. Turn purse right side out through the zipper opening and press lightly.
5. Add a tassel or ribbon to the zipper pull. *See **Figure #11**.

You are finished!

Options and Ideas:

- Tissue lame is generally available in both silver and gold. Change the color scheme to gold using gold tissue lame and gold metallic thread.
- Change the size of the purse as desired. Create additional border motifs for a larger size.
- Lengthen the strap and adjust the position to create a shoulder bag.
- Create additional border motifs using this freestanding method. Apply them to readymade accessories such as purses and belts using a suitable adhesive.

Figure #10a



Figure #10b



Figure #11

