



Brother International Corporation  
2025 A4 Line of the Year Award

# Brother Document Imaging and Labeling Solutions For Business

The Brother Workhorse Series includes a wide portfolio of printers that range from robust, high-volume printers for enterprise and mid to large-sized workgroups, to compact printers that are ideal for small offices.

## Color Laser Printers

### Enterprise / Mid to Large-sized Workgroups



Brother HL-L9470CDN  
 Brother HL-EX470W



HL-L9430CDN

Up to **42ppm**<sup>1</sup>  
**3.5"** touchscreen display  
**2,700** sheets max. paper capacity<sup>2</sup>



HL-L9470CDN



HL-EX470W



PRINTER SHOWN WITH OPTIONAL TOWER TRAY, CONNECTOR, AND STAPLER FINISHER

#### KEY FEATURES

- › 520-sheet capacity paper tray<sup>2</sup>
- › Gigabit Ethernet networking
- › Includes 9,000-page black / 6,500-page color toner cartridges<sup>3</sup>
- › 15,000-page black / 12,000-page color replacement toner cartridges (TN815 series)<sup>3</sup>
- › Recommended monthly print volume up to 12,000 pages<sup>4</sup>

#### All the features of the HL-L9430CDN, plus:

- › High-speed duplex printing (up to 42ppm simplex and duplex)
- › Dual band (2.4GHz / 5GHz) wireless networking
- › Recommended monthly print volume up to 15,000 pages<sup>4</sup>

#### All the features of the HL-L9470CDN, plus:

- › Includes 15,000-page black / 12,000-page color toner cartridges (TNE80 series)<sup>3</sup>

#### Optional paper trays can be added as following:

- › 250-sheet capacity (up to 3), 500-sheet capacity (up to 2), Tower Tray (4 x 520-sheet)<sup>2</sup>







## Color Laser All-in-Ones

### Enterprise / Mid to Large-sized Workgroups



Brother MFC-L9670CDN  
Brother MFC-EX670W



MFC-L9630CDN

Up to **42ppm**<sup>1</sup>  
**7"** touchscreen display  
**100** page capacity ADF<sup>2</sup>  
**2,700** sheets max. paper capacity<sup>2</sup>



MFC-L9670CDN



MFC-EX670W



ALL-IN-ONE SHOWN WITH OPTIONAL TOWER TRAY AND CONNECTOR

### KEY FEATURES

- › 520-sheet capacity paper tray<sup>2</sup>
- › Scan speeds up to 52ipm simplex / 104ipm duplex<sup>5</sup>
- › Gigabit Ethernet networking
- › Includes 9,000-page black / 6,500-page color toner cartridges<sup>3</sup>
- › 15,000-page black / 12,000-page color replacement toner cartridges (TN815 series)<sup>3</sup>
- › Recommended monthly print volume up to 12,000 pages<sup>4</sup>

#### All the features of the MFC-L9630CDN, plus:

- › High-speed duplex printing (up to 42ppm simplex and duplex)
- › Dual band (2.4GHz / 5GHz) wireless networking
- › Recommended monthly print volume up to 15,000 pages<sup>4</sup>

#### All the features of the MFC-L9670CDN, plus:

- › Includes 15,000-page black / 12,000-page color toner cartridges (TNE80 series)<sup>3</sup>

#### Optional paper trays can be added as following:

- › 250-sheet capacity (up to 3), 500-sheet capacity (up to 2), Tower Tray (4 x 520-sheet)<sup>2</sup>

### REPLACEMENT SUPPLIES & OPTIONAL ACCESSORIES

- **TN810BK** Standard Yield Black Toner Cartridge (9,000 pages)<sup>3</sup>
- **TN810C/M/Y** Series Standard Yield Color Toner Cartridges (6,500 pages each)<sup>3</sup>
- **TN810XLBK** High Yield Black Toner Cartridge (12,000 pages)<sup>3</sup>
- **TN810XLC/M/Y** Series High Yield Color Toner Cartridges (9,000 pages each)<sup>3</sup>
- **TN815BK** Super High Yield Black Toner Cartridge (15,000 pages)<sup>3</sup>
- **TN815C/M/Y** Series Super High Yield Color Toner Cartridges (12,000 pages each)<sup>3</sup>
- **TNE80BK** Super High Yield Black Toner Cartridge (15,000 pages)<sup>3</sup>

- **TNE80C/M/Y** Series Super High Yield Color Toner Cartridges (12,000 pages each)<sup>3</sup>
- **DR810CL** Drum Unit (100,000 pages)<sup>6</sup>
- **LT-330CL** Optional 250-Sheet Capacity Paper Tray<sup>2</sup>
- **LT-340CL** Optional 500-Sheet Capacity Paper Tray<sup>2</sup>
- **TT-4000** Optional Tower Tray with Stabilizer (520-sheet capacity x 4 trays)<sup>2</sup>
- **TC-4100** Optional Tower Tray Connector (required for TT-4000)

- **SF-4000** Optional Stapler Finisher (HL-L9430CDN, HL-L9470CDN, and HL-EX470W only)
- **SR-100** Replacement Staple Cartridge (10,000 staples)
- **MX-4000** Optional 4-Bin Mailbox / Sorter / Stacker (HL-L9430CDN, HL-L9470CDN, and HL-EX470W only)
- **CB-1010** Optional 15.7" Printer Cabinet / Stand
- **CH-1000** Optional Card Reader Holder
- **NC-9000W** Optional Dual Band Wireless Module (HL-L9430CDN and MFC-L9630CDN only)



## Color Laser Printer and All-in-One

Small to Medium-sized Businesses / Small to Mid-sized Workgroups



HL-L9310CDW

Up to **33ppm**<sup>1</sup>  
 2.7" touchscreen display  
 2,380 sheets max. paper capacity<sup>2</sup>



MFC-L9570CDW



HL-L9310CDW  
 PLUS TOWER TRAY WITH  
 CONNECTOR OPTIONS



MFC-L9570CDW  
 PLUS TOWER TRAY WITH  
 CONNECTOR OPTIONS

### KEY FEATURES

- › Gigabit Ethernet and wireless networking
- › 250-sheet capacity paper tray<sup>2</sup>
- › Includes 6,500-page toner cartridges<sup>3</sup>
- › 9,000-page replacement toner cartridges (TN439 series)<sup>3</sup>
- › Recommended monthly print volume up to 6,000 pages<sup>4</sup>

### All the features of the HL-L9310CDW, plus:

- › Scan, Copy, Fax
- › Scan speeds up to 52ipm simplex / 104ipm duplex<sup>5</sup>
- › 80-page capacity ADF<sup>2</sup>
- › 7" touchscreen display

### Optional paper trays can be added as following:

- › 250-sheet capacity (up to 3), 500-sheet capacity (up to 2), Tower Tray (4 x 520-sheet)<sup>2</sup>

### REPLACEMENT SUPPLIES & OPTIONAL ACCESSORIES

- TN436 Series Super High Yield Toner Cartridges (6,500 pages each)<sup>3</sup>
- TN439 Series Ultra High Yield Toner Cartridges (9,000 pages each)<sup>3</sup>
- DR433CL Drum Unit (50,000 pages)<sup>7</sup>
- LT-330CL Optional 250-Sheet Capacity Lower Paper Tray<sup>2</sup>
- LT-340CL Optional 500-Sheet Capacity Lower Paper Tray<sup>2</sup>
- TT-4000 Optional Tower Tray with Stabilizer (520-sheet capacity x 4 trays)<sup>2</sup>
- TC-4100 Optional Tower Tray Connector (required for TT-4000)
- CB-1010 Optional 15.7" Printer Cabinet / Stand
- CH-1000 Optional Card Reader Holder



# Monochrome Laser Printers and All-in-Ones

Enterprise / Mid to Large-sized Workgroups



Brother HL-L6415 Series  
Brother HL-EX415DW



HL-L6415dw

Up to **52ppm**<sup>1</sup>  
**3.5"** touchscreen display  
**2,700** sheets max. paper capacity<sup>2</sup>



HL-L6415dwt



HL-EX415dw



HL-L6415dw / HL-EX415dw  
PLUS TOWER TRAY AND  
STAPLER FINISHER OPTIONS

## KEY FEATURES

- › Gigabit Ethernet and dual band (2.4GHz / 5GHz) wireless networking
- › 520-sheet capacity paper tray<sup>2</sup>
- › Includes 11,000-page toner cartridge<sup>8</sup>
- › 25,000-page replacement toner cartridge (TN925)<sup>8</sup>
- › Recommended monthly print volume up to 16,000 pages<sup>4</sup>

### All the features of the HL-L6415dw, plus:

- › Second 520-sheet capacity paper tray<sup>2</sup>

### All the features of the HL-L6415dw, plus:

- › Includes 25,000-page toner cartridge (TNE90)<sup>3</sup>



MFC-L6915dw



MFC-EX915dw

## KEY FEATURES

### All the features of the HL-L6415dw, plus:

- › Scan, Copy, Fax
- › Scan speeds up to 52ipm simplex (mono) / 104ipm duplex (mono)<sup>5</sup>
- › 7" touchscreen display
- › 80-page capacity ADF<sup>2</sup>

### All the features of the MFC-L6915dw, plus:

- › Includes a 25,000-page toner cartridge (TNE90)<sup>3</sup>

### Optional paper trays can be added as following:

- › HL-L6415dw / HL-EX415dw: 250-sheet capacity (up to 3), 520-sheet capacity (up to 2), Tower Tray (4 x 520-sheet)<sup>2</sup>
- › HL-L6415dwt: 250-sheet or 520-sheet capacity (1 total)<sup>2</sup>
- › MFC-L6915dw / MFC-EX915dw: 250-sheet or 520-sheet capacity (2 total), Tower Tray (4 x 520-sheet)<sup>2</sup>



MFC-L6915dw / MFC-EX915dw  
ALL-IN-ONE SHOWN WITH  
TOWER TRAY OPTION

## REPLACEMENT SUPPLIES & OPTIONAL ACCESSORIES

- TN920 Standard Yield Toner Cartridge (3,000 pages)<sup>9</sup>
- TN920XL High Yield Toner Cartridge (6,000 pages)<sup>9</sup>
- TN920XL 2PK High Yield Toner Cartridge Twin Pack (6,000 pages / Cartridge)<sup>9</sup>
- TN920XXL Super High Yield Toner Cartridge (11,000 pages)<sup>9</sup>
- TN920UXXL Ultra High Yield Toner Cartridge (18,000 pages)<sup>9</sup>
- TN925 Max Yield Toner Cartridge (25,000 pages)<sup>9</sup>
- TNE90 Max Yield Toner Cartridge (25,000 pages)<sup>9</sup>
- DR925 Drum Unit (75,000 pages)<sup>9</sup>
- LT-5505 Optional 250-Sheet Capacity Paper Tray<sup>2</sup>
- LT-6505 Optional 520-Sheet Capacity Paper Tray<sup>2</sup>
- SF-4000 Optional Stapler Finisher (HL-L6415dw, HL-L6415dwt, and HL-EX415dw only)
- SR-100 Replacement Staple Cartridge (10,000 staples)
- MX-4000 Optional 4-Bin Mailbox / Sorter / Stacker (HL-L6415dw, HL-L6415dwt, and HL-EX415dw only)
- TT-4000 Optional Tower Tray with Stabilizer (520-sheet capacity x 4 trays)<sup>2</sup> (except HL-L6415dwt)
- CB-2000 Optional 15.7" Printer Cabinet / Stand
- CH-1000 Optional Card Reader Holder



## Monochrome Laser Printer and All-in-One

Small to Medium-sized Businesses



HL-L5215dw

Up to **48ppm**<sup>1</sup>  
 1,390 sheets max.  
 paper capacity<sup>2</sup>



MFC-L5715dw



Brother HL-L5215DW  
 Brother MFC-L5715DW



### KEY FEATURES

- › Gigabit Ethernet and dual band (2.4GHz / 5GHz) wireless networking
- › 250-sheet capacity paper tray<sup>2</sup>
- › Includes 6,000-page toner cartridge<sup>8</sup>
- › 18,000-page replacement toner cartridge (TN920UXXL)<sup>8</sup>
- › Recommended monthly print volume up to 5,000 pages<sup>4</sup>

### All the features of the HL-L5215dw, plus:

- › Scan, Copy, Fax
- › Scan speeds up to 30ipm simplex (mono) / 60ipm duplex (mono)<sup>5</sup>
- › 50-page capacity ADF<sup>2</sup>
- › 3.5" touchscreen display

### Optional paper trays can be added as following:

- › 250-sheet or 520-sheet capacity (2 total)<sup>2</sup>

### REPLACEMENT SUPPLIES & OPTIONAL ACCESSORIES

- TN920 Standard Yield Toner Cartridge (3,000 pages)<sup>8</sup>
- TN920XL High Yield Toner Cartridge (6,000 pages)<sup>8</sup>
- TN920XL 2PK High Yield Toner Cartridge Twin Pack (6,000 pages / Cartridge)<sup>8</sup>
- TN920XXL Super High Yield Toner Cartridge (11,000 pages)<sup>8</sup>
- TN920UXXL Ultra High Yield Toner Cartridge (18,000 pages)<sup>8</sup>
- DR925 Drum Unit (75,000 pages)<sup>9</sup>
- LT-5505 Optional 250-Sheet Capacity Paper Tray<sup>2</sup>
- LT-6505 Optional 520-Sheet Capacity Paper Tray<sup>2</sup>
- CB-2000 Optional 15.7" Printer Cabinet / Stand



The Brother Workhorse MFC-J5955DW Business Color Inkjet All-in-One Printer offers vibrant, borderless output up to 11"x17" with comparable performance, security features, and operating costs as a business laser printer.

## Color Inkjet All-in-One

### Small to Medium-sized Businesses



MFC-J5955dw

Up to **30ppm**<sup>10</sup>  
 Up to **11" x 17"** printing  
**3.5"** touchscreen display



#### KEY FEATURES

- › Ethernet and dual band (2.4GHz / 5GHz) wireless networking
- › Dual 250-sheet capacity trays<sup>2</sup>
- › 50-page capacity ADF<sup>2</sup>
- › Includes 5,340-page black / 1,950-page color ink cartridges<sup>11</sup>
- › Low-cost output using 6,000-page black / 5,000-page color replacement ink cartridges (LC406XL series)<sup>12</sup>
- › Integrated NFC card reader
- › BR-Script<sup>3</sup> and PCL6 emulations
- › Recommended monthly print volume up to 250 - 3,500 pages<sup>4</sup>



#### Ideal for multiple verticals:

- › **Retail:** Impactful POS displays and signage, seasonal decorations
- › **Hospitality / Restaurants:** Menus, event invitations, special promotions
- › **Real Estate:** On-demand brochures, open house flyers, property listings
- › **Financial:** Large format financial documents and reports for easier readability
- › **Education:** Classroom materials, posters, newsletters, administrative documents
- › **Construction / Engineering:** Drawings and construction plans



#### REPLACEMENT SUPPLIES

- LC406BK Standard Yield Black Ink Cartridge (3,000 pages)<sup>11</sup>
- LC406C/M/Y Series Standard Yield Color Ink Cartridges (1,500 pages each)<sup>11</sup>
- LC406 3PK 3-Pack of Standard Yield Cyan, Magenta, and Yellow Ink Cartridges (1,500 pages each)<sup>11</sup>
- LC406XLBK High Yield Black Ink Cartridge (6,000 pages)<sup>11</sup>
- LC406XLC/M/Y Series High Yield Color Ink Cartridges (5,000 pages each)<sup>11</sup>

The Brother Workhorse Series now includes models designed to meet the needs of decentralized workforces and are ideal for small offices with lower print volumes. These devices feature a space-saving design.

## Compact Digital Color Printer and All-in-One

Small Offices / Small Workgroups



HL-L8245cdw

Up to **31ppm**<sup>1</sup>  
**2.7"** touchscreen display  
**530** sheets max. paper capacity<sup>2</sup>



MFC-L8395CDW



Brother MFC-L8395CDW

### KEY FEATURES

- › Gigabit Ethernet and dual band (2.4GHz / 5GHz) wireless networking
- › 250-sheet capacity paper tray<sup>2</sup>
- › Cost-efficient output using 4,500-page black / 4,000-page color replacement toner cartridges (TN229XXL series)<sup>3</sup>
- › Recommended monthly print volume up to 4,000 pages<sup>4</sup>

### All the features of the HL-L8245cdw, plus:

- › Scan, Copy, Fax
- › Scan speeds up to 28ipm simplex (mono) / 58ipm duplex (mono)<sup>5</sup>
- › 50-page capacity ADF<sup>2</sup>
- › 3.5" touchscreen display



### REPLACEMENT SUPPLIES & OPTIONAL ACCESSORIES

- TN229BK Standard Yield Black Toner Cartridge (1,500 pages)<sup>3</sup>
- TN229C/M/Y Series Standard Yield Color Toner Cartridges (1,200 pages each)<sup>3</sup>
- TN229 4PK 4-Pack of Standard Yield Black, Cyan, Magenta, and Yellow Toner Cartridges (1,500 BK / 1,200 CMY pages)<sup>3</sup>
- TN229XLBK High Yield Black Toner Cartridge (3,000 pages)<sup>3</sup>
- TN229XL 2PK High Yield Black Toner Cartridge Twin Pack (3,000 pages / Cartridge)<sup>3</sup>
- TN229XLC/M/Y Series High Yield Color Toner Cartridges (2,300 pages each)<sup>3</sup>
- TN229XLBK Super High Yield Black Toner Cartridge (4,500 pages)<sup>3</sup>
- TN229XLC/M/Y Series Super High Yield Color Toner Cartridges (4,000 pages each)<sup>3</sup>
- DR229CL Drum Unit (20,000 pages)<sup>3</sup>
- LT-310CL Optional 250-Sheet Capacity Paper Tray<sup>2</sup>





## Monochrome Laser Printer and All-in-One

Small Offices / Small Workgroups



HL-L2865dw

Up to **36ppm**<sup>1</sup>



MFC-L2980dw

### KEY FEATURES

- › Ethernet and dual band (2.4GHz / 5GHz) wireless networking
- › 250-sheet capacity paper tray<sup>2</sup>
- › Cost-efficient output using 5,000-page replacement toner cartridge (TN835)<sup>8</sup>
- › Includes 1,200-page toner cartridge<sup>8</sup>
- › Mobile device printing<sup>14</sup>
- › Recommended monthly print volume up to 2,500 pages<sup>4</sup>

### All the features of the HL-L2865dw, plus:

- › Scan, Copy, Fax
- › 50-page capacity ADF<sup>2</sup>
- › 3.5" touchscreen display
- › Recommended monthly print volume up to 3,500 pages<sup>4</sup>

### REPLACEMENT SUPPLIES

- TN830 Standard Yield Toner Cartridge (1,200 pages)<sup>8</sup>
- TN830XL High Yield Toner Cartridge (3,000 pages)<sup>8</sup>
- TN830XL 2PK High Yield Toner Cartridge Twin Pack (3,000 pages / Cartridge)<sup>8</sup>
- TN835 Super High Yield Toner Cartridge (5,000 pages)<sup>8</sup>
- DR830 Drum Unit (15,000 pages)<sup>15</sup>

# Professional Desktop Scanners

Brother offers desktop scanners to help businesses streamline the process of digitalizing, organizing and sharing documents. These devices offer easy integration with existing business processes, systems, and workflows.



ADS-4300N

Up to **40ipm**<sup>16</sup>  
to simplex scanning

Up to **80ipm**<sup>16</sup>  
to duplex scanning

**3-Year** limited warranty



ADS-4700w



ADS-4900w



Brother ADS-4700W  
Brother ADS-4900W

## KEY FEATURES

- › Ethernet networking
- › 80-page capacity ADF<sup>2</sup>
- › TWAIN, WIA, ISIS, and SANE drivers to seamlessly integrate with existing workflows
- › Included powerful bundled software suite<sup>17</sup>
- › Recommended daily scan volume up to 6,000 pages<sup>18</sup>

### All the features of the ADS-4300N, plus:

- › 4.3" touchscreen display
- › Wireless networking
- › 56 customizable shortcuts
- › Enhanced security features

### All the features of the ADS-4700w, plus:

- › Up to 60ipm simplex / 120ipm duplex scanning<sup>16</sup>
- › 100-page capacity ADF<sup>2</sup>
- › Dual band (2.4GHz / 5GHz) wireless networking
- › Recommended daily scan volume up to 9,000 pages<sup>18</sup>



## REPLACEMENT SUPPLIES & OPTIONAL ACCESSORIES

- PRK-A3001 Replacement Roller Kit (ADS-4300N and ADS-4700w)
- PRK-A4001 Replacement Roller Kit (ADS-4900w)
- CS-A3301 Optional Carrier Sheet (2-pack)



# Value Beyond the Box

Meet the demanding needs of the modern office with Brother hardware, software, and service-based solutions, designed to give you a competitive advantage. Visit [brother-usa.com/solutions](http://brother-usa.com/solutions) to learn more.

## Value Services

From enhanced collaboration to increased document security, Brother Value Services can help your mid to large-sized organization streamline processes, reduce operational and device running costs, and create efficiencies required for long-term success.

### Value Services include:

#### Secure Print Advanced

Secure print job release solution without the high overhead cost.

#### Custom User Interface

Modified user interface for business workflows and security policy.

#### Special Solutions Team

Customized solutions for unique configuration and deployment requirements.

#### Tungsten ControlSuite (formerly Kofax)

Secure, govern, and manage every aspect of information distribution.

#### PaperCut MF

Monitor and control copying, printing, and faxing.

#### SecureRx by TroyRx

Print CMS-compliant prescriptions directly onto plain paper.



## Security Services

To help protect against print security threats and maintain compliance, Brother devices are equipped with robust Triple Layer Security features.

### DEVICE

Restrict and limit access to the device at the individual, group, and activity level.

### DOCUMENT

Protect documents in transit to and from print devices.

### NETWORK

Safeguard against outside threats using higher level security protocols.

## VPP Value Print Program

Provides discounts on Genuine Brother toner, ink, and drums for customers who commit to purchase and install select Brother printers and all-in-ones, along with the requisite Brother Genuine Supplies. Includes a limited warranty extension to cover three full years of warranty coverage.

### LOW COST PER PAGE (CPP)

With discounts on Brother Genuine Supplies, the Value Print Program helps to drive CPP among the lowest in the industry.

### DEVICE UPTIME

Device unification with Brother branded equipment allows for readily available replacement parts. Downtime is virtually eliminated, increasing employee productivity.

### CUSTOMER NETWORK SECURITY AND INTEGRITY

With VPP there is no requirement to load third-party software on a network, reducing the need for on-site visits.

# Brother Assessment Services

Brother Assessment Services can help customers optimize their print and imaging environment. From predictive analytics to full, on-site infrastructure optimization assessments, our team of experts help customers develop strategies to increase productivity, lower costs, increase security, and reduce their environmental impact.

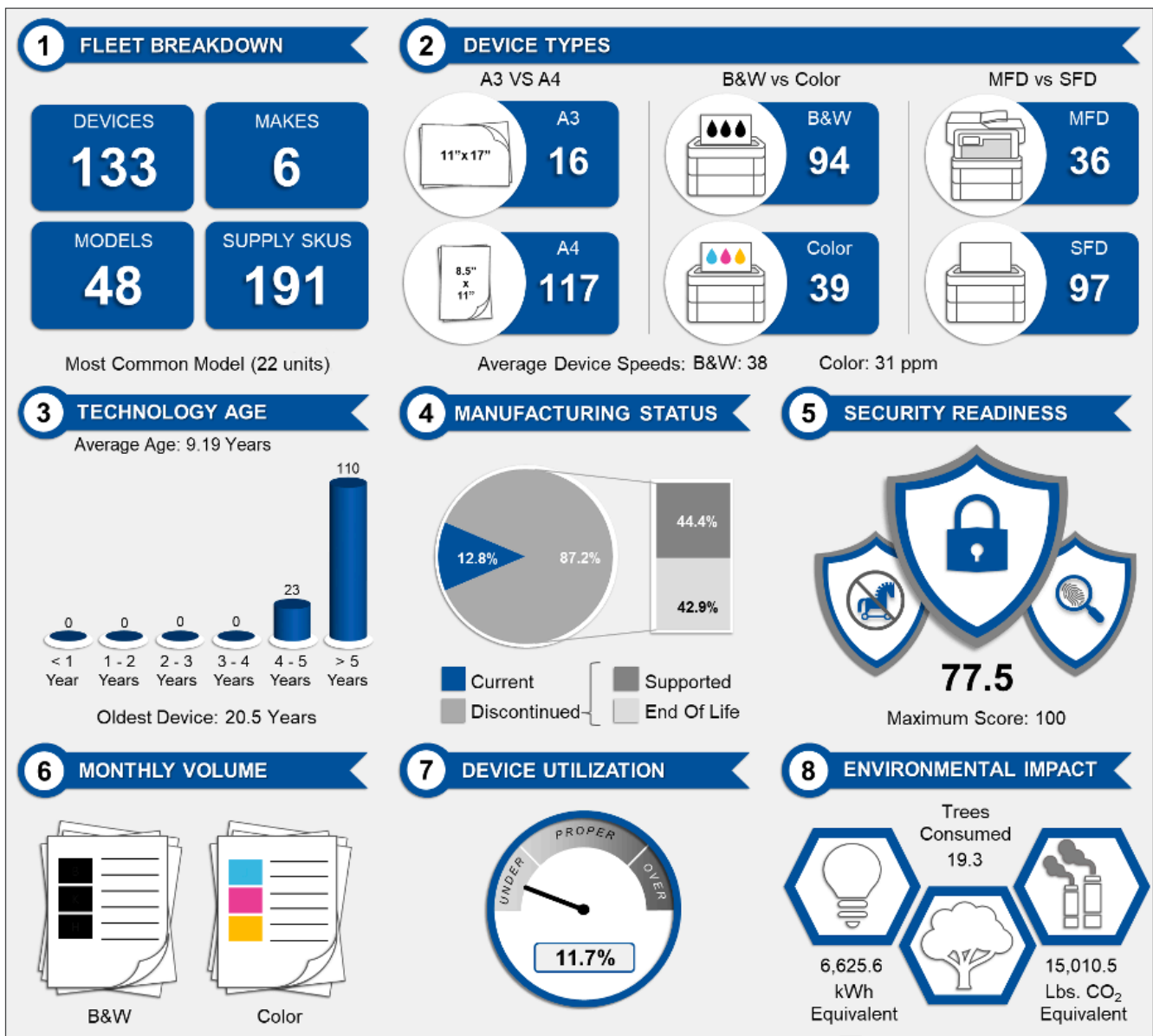
## Print Cost Predictive Analysis

Snapshot of a print environment to generate a fleet status and total cost of ownership report.

## Infrastructure Optimization Assessment

Audit of select business locations, mapping out devices in a floor plan, and recommending a cost-effective solution.

## SAMPLE ASSESSMENT AT-A-GLANCE





# Labeling Solutions

Brother offers a wide range of labeling solutions to meet the needs of busy offices, retail stores, warehouses, and more.



## QL Professional Label Printers



Up to **93** labels per minute<sup>19</sup>

QL-800



Up to **110** labels per minute<sup>19</sup>

QL-810W / QL-810Wc

### KEY FEATURES

- › Ideal for name badges, retail shelf tags, healthcare patient identification and specimen collection, and product labels
- › USB interface
- › Print black and red labels using DK-2251 roll
- › Easy to integrate with free software development kits (SDK's)

### All the features of the QL-800, plus:

- › Wi-Fi® interface
- › Optional Li-ion battery for a complete mobile solution



Up to **110** labels per minute<sup>19</sup>

QL-820NWB / QL-820NWBc



Up to **69** labels per minute<sup>19</sup>

QL-1100  
QL-1110NWB / QL-1110NWBc

### KEY FEATURES

#### All the features of the QL-810W / QL-810Wc, plus:

- › Ethernet and Bluetooth® interfaces
- › Internal date and time
- › USB Host interface for use with a peripheral such as a scanner (USB host only supported with QL-820NWB and QL-1110NWB models)

- › Ideal for large name badges, product and shipping labels
- › Prints on labels up to 4" wide (including shipping postage labels)
- › Automatic crop function to easily print barcode labels from A4 / letter size label sheet templates (Windows only)
- › Ethernet, Wi-Fi®, and Bluetooth® interfaces (QL-1110NWB / QL-1110NWBc)

## REPLACEMENT SUPPLIES & OPTIONAL ACCESSORIES

[brother-usa.com/supplies/label-tape](http://brother-usa.com/supplies/label-tape)

### Brother Developer Program

Tools, documentation, and resources to build solutions for Brother devices: [developerprogram.brother-usa.com](http://developerprogram.brother-usa.com).

# Mobile Printing Solutions for Documents, Receipts, and Labels

8.5" x 11" thermal documents, labels, invoices

Up to **13.5** pages per minute<sup>20</sup>



PocketJet 8

1" to 2" labels, receipts and tags

Up to **6"** per second<sup>20</sup>

Up to **300** 1-inch labels per minute<sup>19</sup>



RuggedJet 2

1" to 3" labels, receipts and tags

Up to **5"** per second<sup>20</sup>

Up to **300** 1-inch labels per minute<sup>19</sup>



RuggedJet 3200

2" to 4" labels, receipts and tags

Up to **5"** per second<sup>20</sup>

Up to **300** 1-inch labels per minute<sup>19</sup>



RuggedJet 4200

## KEY FEATURES

- › Ideal for field service, home healthcare, and mobile or mounted applications
- › Print sharp details up to 300dpi
- › Optional rechargeable Li-ion battery with a yield up to 600 pages on a single charge<sup>20</sup>
- › Dual Wi-Fi® and Bluetooth® wireless interfaces (USB and Bluetooth® only models available)
- › Ideal for small format, mobile POS receipt and label applications
- › Rugged design tested to withstand drops from up to 6 feet<sup>21</sup>
- › Connects easily with USB 2.0, Wi-Fi®, and Bluetooth® wireless interfaces
- › Ideal for 3" format labels found in retail, manufacturing, etc
- › Choose print resolution: 203 or 300dpi
- › Print all day on a single charge with included smart Li-ion battery<sup>20</sup>
- › 1 LED control panel
- › NFC for easy pairing and Wi-Fi® and Bluetooth® options
- › Ideal for wearing, carrying or mounting this lightweight ergonomic printer in-vehicle and out
- › IP54 certification for dust and moisture, plus rugged design tested to withstand drops from up to 6 feet<sup>21</sup>
- › Connects easily with USB 2.0, Wi-Fi®, and Bluetooth® wireless interfaces
- › Available with optional AC and DC vehicle adapters, various mounts, and carrying cases for greater mobility

# Desktop Label Printing Solutions for Business Professionals



TD-2130N

2" direct thermal

Up to **6"** per second<sup>20</sup>

Up to **360** 1-inch labels per minute<sup>19</sup>



TD-4550DNWB

4" direct thermal

Up to **6"** per second<sup>20</sup>

Up to **360** 1-inch labels per minute<sup>19</sup>



TD-4650DNWB

4" thermal transfer

Up to **6"** per second<sup>20</sup>

Up to **360** 1-inch labels per minute<sup>19</sup>

## KEY FEATURES

- › Ideal for food service, healthcare, etc, printing 2" labels, tags and wristbands
- › Space saving, compact footprint
- › Optional accessories to convert to a standalone mobile print station with a touch panel keyboard and rechargeable battery pack
- › Additional models: TD-2020, TD-2120N
- › Ideal for printing high quality direct thermal labels such as shipping labels, receipts, tickets and labels for perishable goods
- › Print accurate scanning barcodes at 203 or 300dpi on a label up to 4.65" wide
- › Integrate with leading WMS systems and directly from within SAP® Printer Vendor program
- › Additional models: TD-4410d, TD-4420DN
- › Prints thermal transfer and direct thermal media up to 4.4" wide
- › Ideal for batch printing shipping labels
- › Multiple connectivity options such as Wi-Fi® and Bluetooth®
- › Additional models: TD-4420TN, TD-4520TN, TD-4750TNWB, TD-4750TNWBCS

## REPLACEMENT SUPPLIES & OPTIONAL ACCESSORIES

[brothermobilesolutions.com/products/accessories](http://brothermobilesolutions.com/products/accessories)





## Titan Industrial Printer Series – 4-inch Thermal Transfer Technology



Up to **10"** per second<sup>20</sup>  
Up to **600** 1-inch labels per minute<sup>19</sup>

TJ-4021TN / TJ-4121TN



Up to **14"** per second<sup>20</sup>  
Up to **600** dpi print resolution  
Up to **840** 1-inch labels per minute<sup>19</sup>

TJ-4420TN / TJ-4520TN  
TJ-4620TN



Up to **14"** per second<sup>20</sup>  
Internal rewinder  
Up to **840** 1-inch labels per minute<sup>19</sup>

TJ-4422TN / TJ-4522TN

### KEY FEATURES

- › Continuous performance at a great value
- › Available in 203 or 300dpi for high volume, high quality printing
- › Ethernet interface and optional wireless module
- › Speed, precision and durability for industrial demands
- › Print speeds up to 14ips<sup>20</sup> on the TJ-4520TN and up to 600dpi<sup>20</sup> print resolution for small fonts, 2D barcodes, and detailed ID labels on the TJ-4620TN model
- › Bright multicolor LCD display with standalone functionality
- › Exceptional speed with enhanced functionality
- › Ultra-fast print speeds up to 14ips<sup>20</sup> for high-volume shipping labels
- › Built-in automatic internal rewinder for printing batch product labels to be used as needed

### REPLACEMENT SUPPLIES & OPTIONAL ACCESSORIES

[brothermobilesolutions.com](http://brothermobilesolutions.com)

- Brother mobile, desktop and industrial printers come with a 2-year Premier Limited Warranty.
- Software development kits available for integration support.





1 Based on one-sided printing. Change from default setting required.

2 Maximum capacity based on using 20 lb. paper.

3 Approximate toner cartridge yields in accordance with ISO/IEC 19798 (letter/A4).

4 The recommended range of monthly printed pages to achieve the best possible performance and printer life. Printers are intended to handle occasional usage beyond this range with little or no effect. Consistently printing above the recommended print volume, however, may adversely affect the print quality or life of the machine. It is always best to choose a printer with an appropriate recommended print volume to allow for any anticipated increase in printing needs.

5 Color and monochrome scan speeds in accordance with ISO/IEC 17991 with all advanced features turned off, using letter-sized paper at 200/300dpi.

6 Approximate yield based on 3 pages per job (letter/A4 single-sided pages). The number of pages may be affected by a variety of factors including but not limited to media type and media size.

7 Approximately 50,000 pages based on 3 pages per job and 30,000 pages based on 1 page per job and (letter/A4 single-sided pages). The number of pages may be affected by a variety of factors including but not limited to media type and media size.

8 Approximate toner cartridge yields in accordance with ISO/IEC 19752 (letter/A4).

9 Approximately 75,000 pages based on 3 pages per job and 45,000 pages based on 1 page per job (letter/A4 simplex pages). The number of pages may be affected by a variety of factors including but not limited to media type and media size.

10 ISO print speed based on ISO/IEC 24734 (after first set of ISO test pages). For more details, please visit [www.brother-usa.com/printspeed](http://www.brother-usa.com/printspeed).

11 Approximate page yields in accordance with ISO/IEC 24711. For additional page yield information, see [go.brother/pageyield](http://go.brother/pageyield).

12 BR-Script3 is PostScript®3™ compatible.

13 Approximately 20,000 pages based on 1 page per job and 30,000 pages based on 3 pages per job (letter/A4 single-sided pages). The number of pages may be affected due to a variety of factors including but not limited to media type and media size.

14 Requires connection to a wireless network.

15 Approximately 15,000 pages based on 1 page per job (letter/A4 single-sided pages). The number of pages may be affected due to a variety of factors including but not limited to media type and media size.

16 Color and monochrome scan speeds with letter-sized paper at 200/300dpi. Actual processing speeds may vary with data transmission and software processing times.

17 Additional download required. Software application compatibility may vary based on operating system. App availability may vary based on country.

18 Maximum number of scanned pages per day can be used to compare designed durability between like Brother products. For maximum product life, it is best to choose a scanner with a daily duty cycle that exceeds your requirements.

19 Based on using standard address labels, text only, at 300 x 300dpi.

20 Based on performance tests using Brother certified media. Actual results may vary by application.

21 Drop protection up to 6ft, measured in a controlled test environment, [without/with] IP54 protective case.

All trademarks and registered trademarks referenced herein are the property of their respective companies. Images are for illustrative purposes only. All specifications subject to change without notice.