

Software User's Guide

Brother QL-series

The contents of this guide and the specifications of this product are subject to change without notice. Brother reserves the right to make changes without notice in the specifications and materials contained herein and shall not be responsible for any damages (including consequential) caused by reliance on the materials presented, including but not limited to typographical and other errors relating to the publications. The screen images in this guide can differ depending on your OS or printer.

Contents

Contents	1
Introduction	2
Trademarks	2
About this Guide	2
Symbols used in this Guide	2
Creating Labels	3
Label creation overview	3
From label creation to printing	3
How to use P-touch Editor for Windows®	5
Starting P-touch Editor	5
Start P-touch Editor Help	9
Creating labels with other applications	11
How to use the P-touch Address Book	17
Starting the P-touch Address Book	17
Creating a new contact	19
How to use P-touch Transfer Manager (QL-650TD / QL-580N / QL-1050 / QL-1060N only)	20
Starting up P-touch Transfer Manager	20
Transferring label templates from the PC to the printer via USB	21
Backing up label templates	23
Transfer the templates to the printer via the network (QL-580N / 1060N only)	24
How to use the P-touch Library	25
Starting up the P-touch Library	25
Searching labels	26
How to use P-touch Editor Lite (QL-700 and Windows® only)	27
Downloading a New Label Collection Category to P-touch Editor / Updating P-touch Editor Software and P-touch Editor Lite (QL-700 only)	30
Downloading a New Label Collection Category to P-touch Editor / Updating P-touch Editor Software	30
Updating P-touch Editor Lite	31
How to use P-touch Editor for Macintosh	34
Starting P-touch Editor	34
Start P-touch Editor Help	36
Appendix	37
Printing directly from other applications	37
Setting the Printer Driver	37
Printing from other applications	39

Introduction

The Brother label printer (hereafter referred to as "the machine") enables you to quickly and easily print custom labels created with the label software, P-touch Editor.

▶ Trademarks

The Brother logo is a registered trademark of Brother Industries, Ltd.

Brother is a registered trademark of Brother Industries, Ltd.

© 2011 Brother Industries, Ltd. All rights reserved.

Microsoft, Windows Vista, Windows Server, Windows, Excel and Outlook are registered trademarks of Microsoft Corporation, USA.

Apple, Macintosh and Mac OS are trademarks of Apple Inc., registered in the United States and other countries.

The names of other software or products used in this document are trademarks or registered trademarks of the respective companies that developed them.


Each company whose software title is mentioned in this guide has a Software License Agreement specific to its proprietary programs.

All other brand and product names mentioned in this Software User's Guide and the User's Guide are registered trademarks of their respective companies.

▶ About this Guide

This guide (PDF) is included on the CD-ROM.



In this guide, when the mouse pointer changes to  you can just click to jump to the corresponding pages. For the basic functions of Adobe® Reader®, see the Adobe® Reader® Help files.

▶ Symbols used in this Guide

The symbols used throughout this guide are as follows:



This symbol shows information or directions that should be followed. Ignoring them may result in injury, damage, or failed operations.



This symbol shows information or directions that can help you better understand and more efficiently use the machine.

Creating Labels

Label creation overview

This section describes the general procedure for creating labels using the machine. For details on step-by-step instructions, see Help files.

► From label creation to printing

1 Choose the type of label you want to create. There is a variety to choose from.

Label examples

LBI Corporation	
Department	Planning Dept.
Serial No.	0011154
Device No.	E6200-A4C

2 Prepare the appropriate DK Roll for the label you want to create.

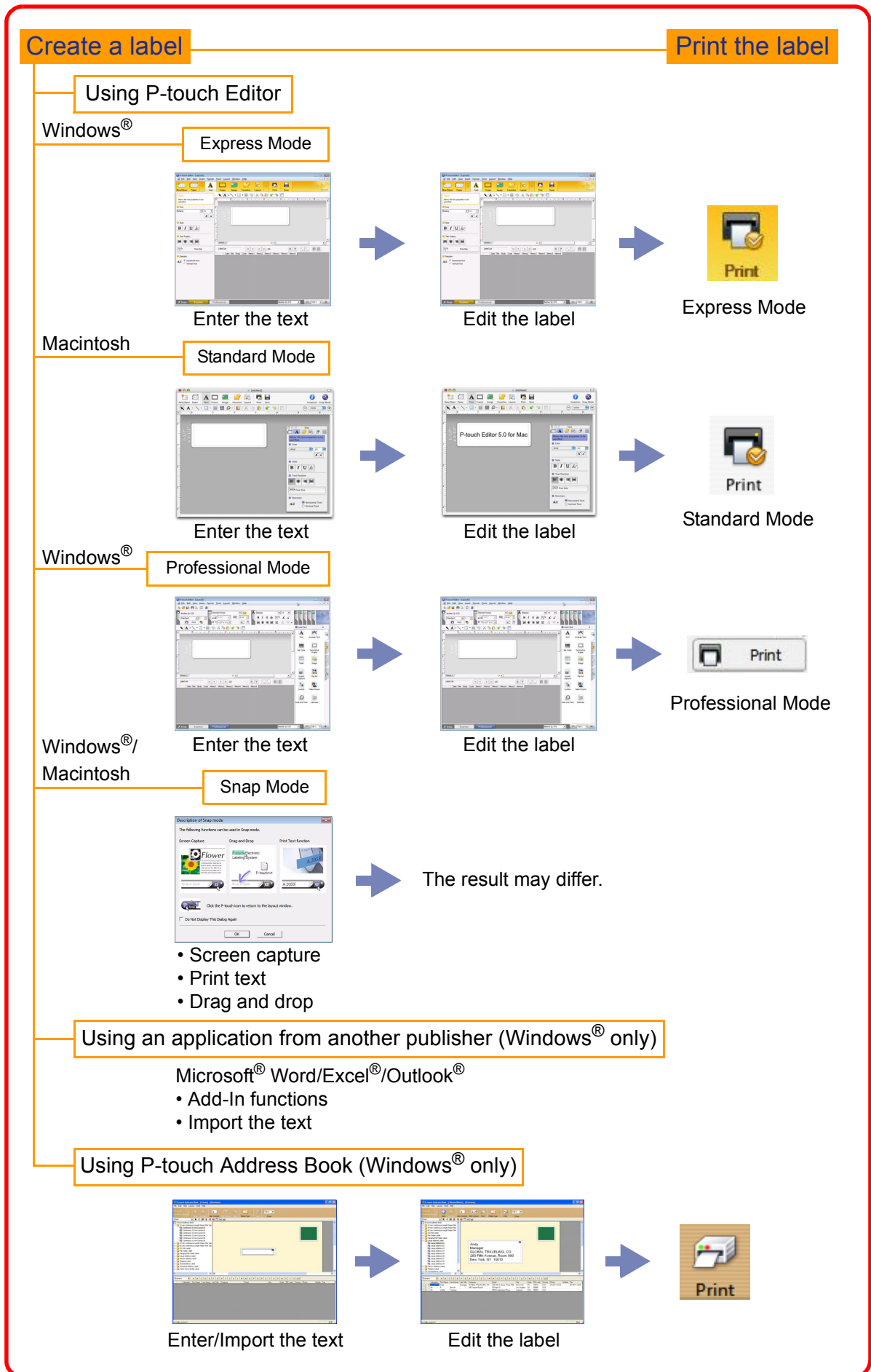
The machine is supplied with one or more sample rolls. (Other rolls can be purchased separately.)

Choose the appropriate DK Roll for the type of label you will create.

Install the DK Roll.

→ Quick Setup Guide

3 Create and print the label.



How to use P-touch Editor for Windows®

This section explains the procedure for starting P-touch Editor. With P-touch Editor, you can create various kinds of labels.

See the P-touch Editor Help for samples of various kinds of labels and details on creating, printing, and saving the labels. The following example uses Windows Vista®. Read the printer name in each image as your purchased machine model name.

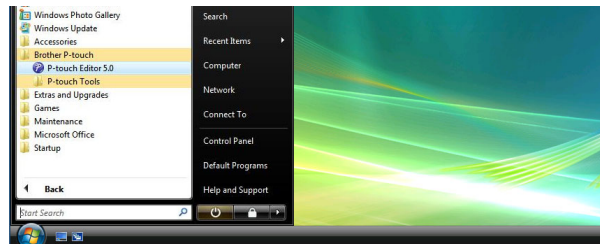
▶ Starting P-touch Editor

1 Click [Start]-[All Programs]-[Brother P-touch]-[P-touch Editor 5.0].



You can also start P-touch Editor using the following methods (only if you created the shortcut during installation):

- Double-click the shortcut icon on the desktop.
- Click the shortcut icon on the Quick Launch bar.



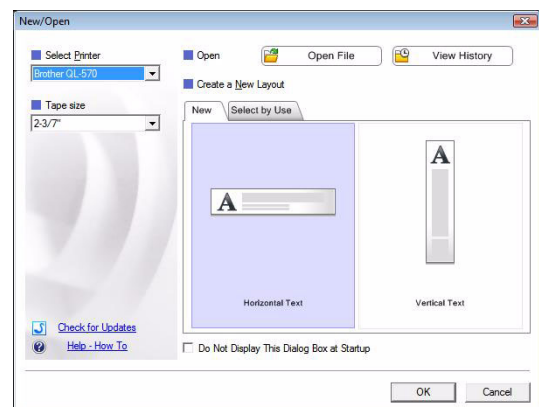
When P-touch Editor is launched, the [New/Open] dialog box appears, allowing you to choose whether you want to create a new label layout or open an existing label.



To specify how the P-touch Editor works when it starts, click [Tools]-[Options] of the menu bar on the P-touch Editor to display the [Options] dialog box. In the [General] tab, you can choose the setting in the [Operations] list box in the [Startup Settings]. Normally, choose [Display New/Open Dialog Box].

2 Choose an option in the [New/Open] dialog box and click .

- You can choose the label printer and media size.
- When you choose [Open File], the [Open] dialog box appears. You can choose and open a file you have created and stored previously.
- When you choose [View History], the [History] dialog appears. You can choose from recently created labels.
- When you choose [New], choose either vertical writing style or horizontal writing style.
- When you choose [Select by Use], you can choose by label applications.
- When you choose [Help-How To], the P-touch Editor Help appears.
The Help files allow you to learn step by step how to create a label layout.
- When you choose [Check for Updates] with the PC connected to the Internet, you will be taken to the Brother Solutions Center. Use the Brother Solutions Center to check for the latest software downloads and FAQs.

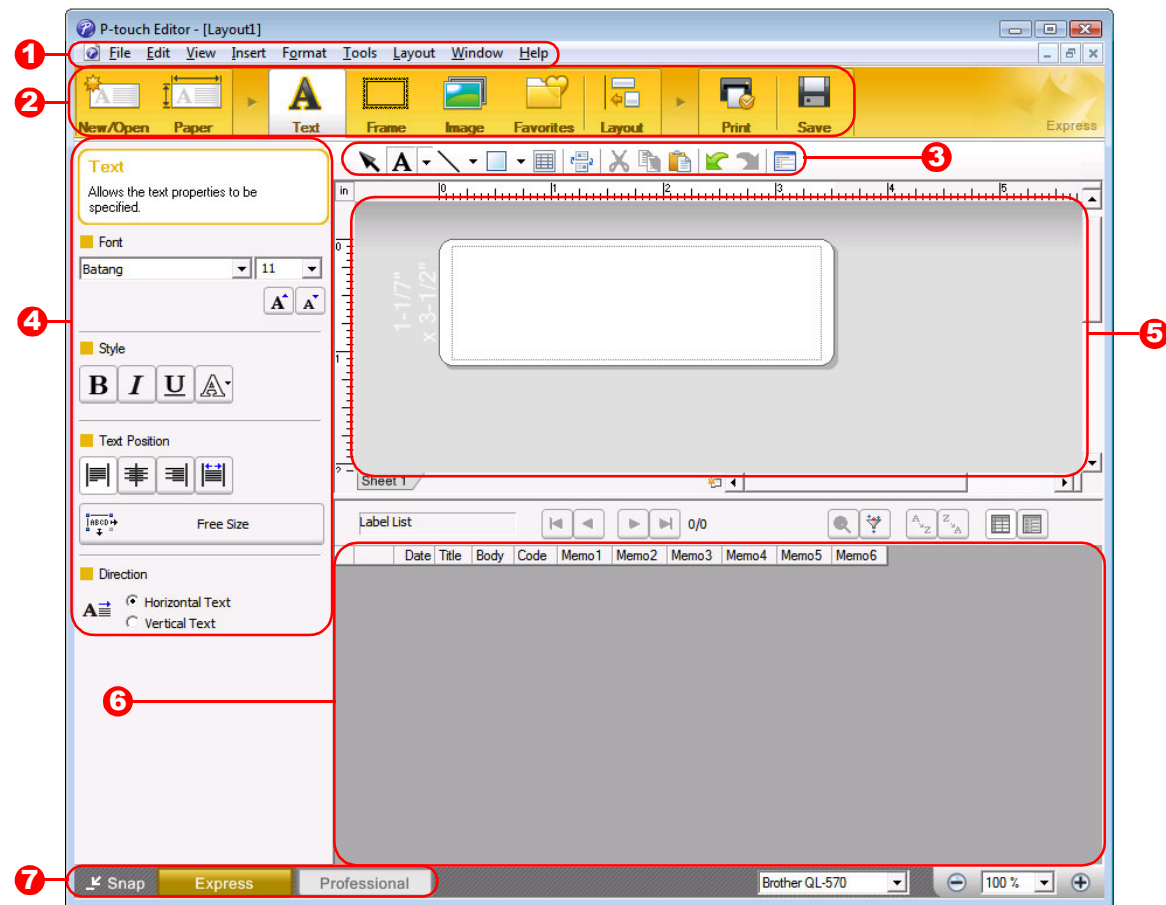


Layout window

■ Express Mode

This mode provides easy label creation with texts and images.

The layout window consists of the following sections:



1 Menu bar

Commands are categorized under each menu (File, Edit, View, and Insert, etc.) by function.

2 Command bar

Contains the New/Open, Paper, Text, Frame, Image, and other commands.

3 Draw/Edit toolbar

Provides tools for choosing an object, entering text, drawing graphics, etc.

4 Property bar

You can easily insert and format text, images, etc.

5 Layout window

Used to display and edit objects.

6 Database window

Displays a connected database.

7 Mode Switch

Switches the Editor's modes.

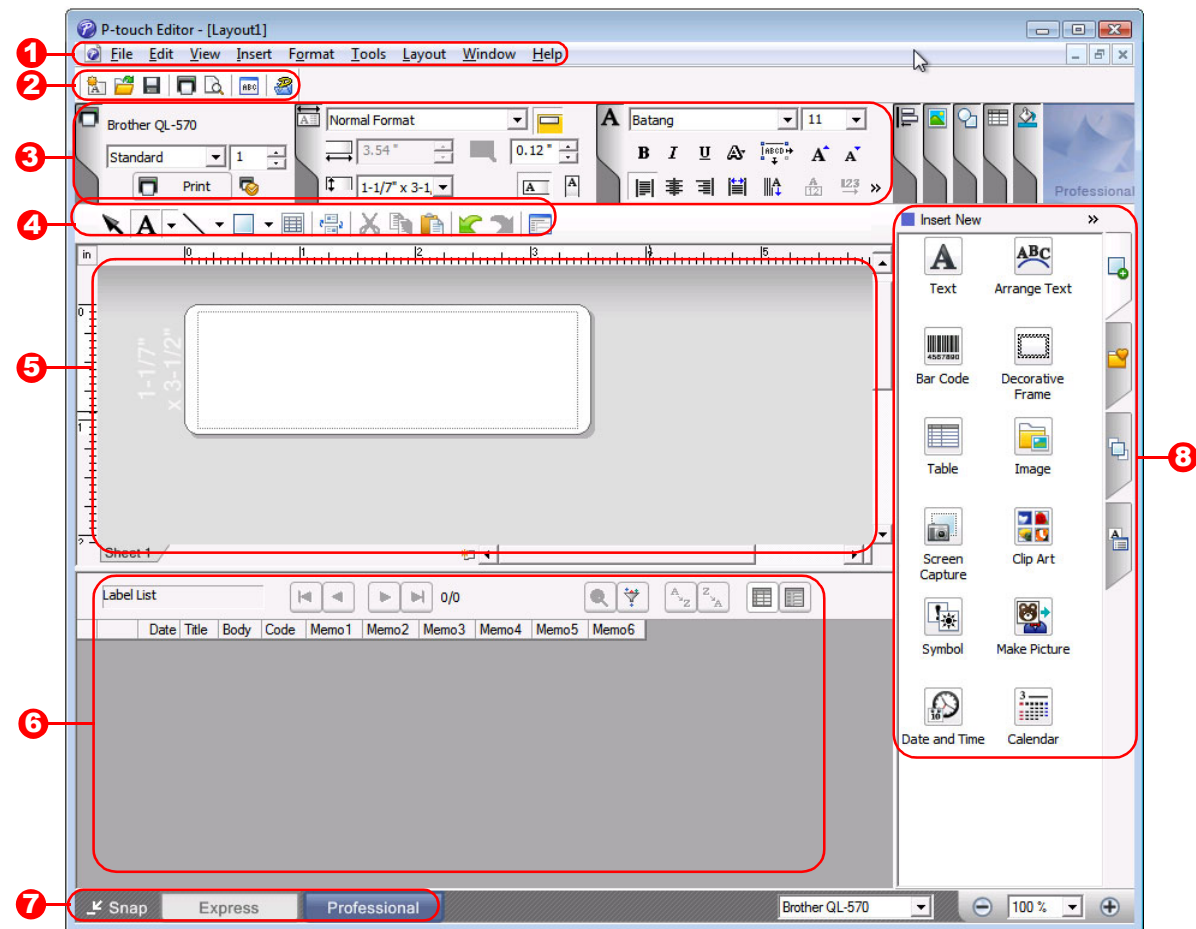


- The [View] menu allows you to show/hide the toolbars and windows.
- See the P-touch Editor Help for details.

Professional Mode

This mode provides full-scale label creation from creating the templates.

The layout window consists of the following sections:



1 Menu bar

Commands are categorized under each menu (File, Edit, View, and Insert, etc.) by function.

2 Standard toolbar

Provides a group of frequently used commands (New Layout, Open, Save, Print, etc.).

3 Property palette

Contains the Print, Paper, Text and Layout property boxes. Click on the left side of each palette to show/hide the box.

4 Draw/Edit toolbar

Provides tools for choosing an object, entering text, drawing graphics, etc.

5 Layout window

Used to display and edit objects.

6 Database window

Displays a connected database.

7 Mode Switch

Switches the Editor's modes.

8 Side bar

By selecting a tab, you can easily insert and format text, bar codes, tables, etc., change the order of the objects to create a label template, or set the advanced settings.



- The [View] menu allows you to show/hide the toolbars, palette, and windows.
- See the P-touch Editor Help for details.

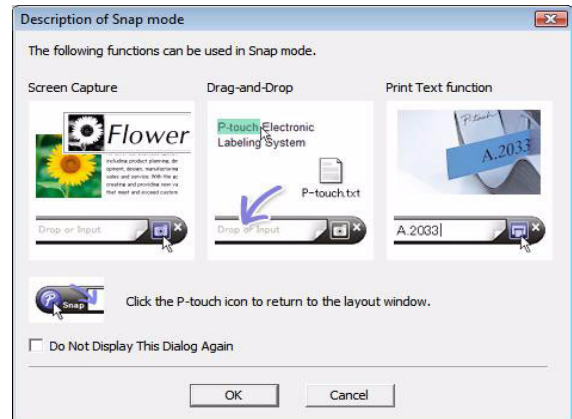
■ Snap Mode

With this mode, you can capture the screen, print it as an image, and save it for future use. To start Snap mode, follow the steps below.

1 When you click [Snap] from Mode Switch, the Description of Snap mode dialog box appears. Click .



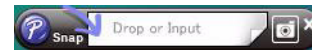
- If you put a checkmark in [Do Not Display This Dialog Again], you can go to Snap mode directly from the next time.
- You can also start Snap mode from [Start]-[All Programs (Programs)]-[Brother P-touch]-[P-touch Editor 5.0 (Snap mode)].



2 Snap mode appears.



See the P-touch Editor Help for details.

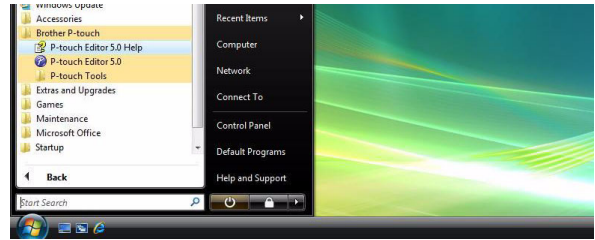


▶ Start P-touch Editor Help

This section explains how to start P-touch Editor Help for Windows®. The following example uses Windows Vista®.

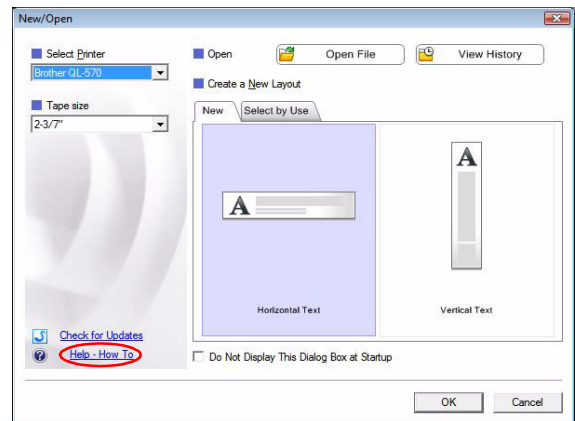
■ From the Start button

To start P-touch Editor Help, click the Start button on the task bar, and point to [All Programs]. Click [Brother P-touch] and then [P-touch Editor 5.0 Help].



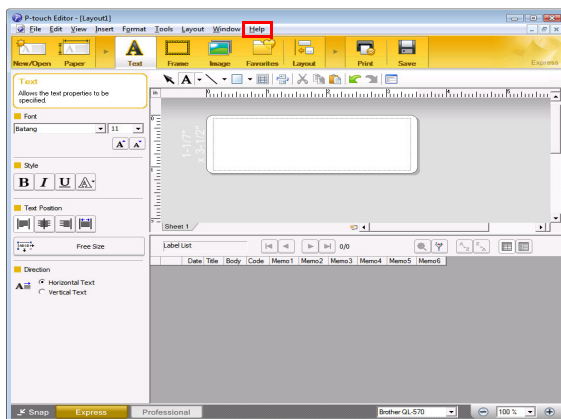
■ From the New/Open dialog

When you start P-touch Editor 5.0 and the New/Open dialog box appears, click Help-How To.

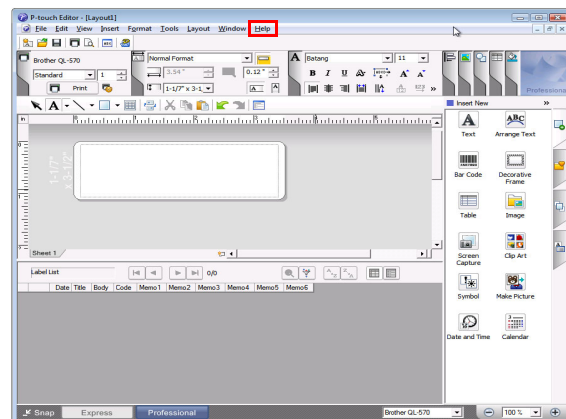


■ From P-touch Editor

Click the Help menu and choose P-touch Editor Help.

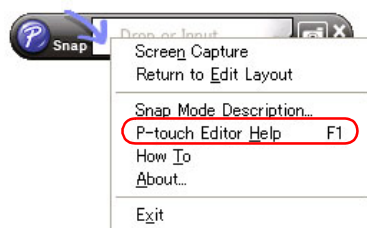


Express Mode



Professional Mode

Right click the mouse and choose P-touch Editor Help.





Snap Mode

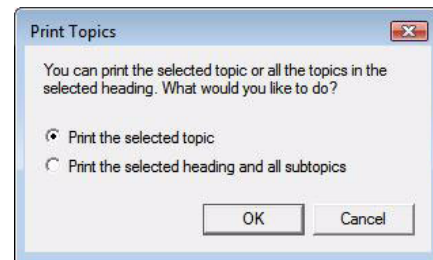
● Printing the Help description

The information given in P-touch Editor Help can be printed. Use your normal printer to print the P-touch Editor Help information.


1 In the [Contents] tab, choose any topic you want to print.

2 Click  on the Toolbar.

3 Choose the range of topics to be printed, and click .



4 Specify the [Printer] and click .

 Choose a normal printer that supports general paper sizes, such as Letter.

▶ Creating labels with other applications

When installing the software, if you choose the Add-In function, a P-touch icon will be automatically added onto the Microsoft® Word, Excel®, and Outlook® toolbar. (Only if Microsoft® Word, Excel®, Outlook® are already installed on your PC.) The Add-In function is valid for Windows® only.

In each application, by choosing the text you want to print and clicking on the P-touch icon, you can create and print labels quickly and easily.

Depending on the setting, the character string that is downloaded by using the Add-In function will be registered to the Label List. The Label List is a database exclusively for P-touch Editor. To display Label List, click [File]-[Database]-[Label List].



- The Add-In function supports the following applications:
Microsoft® Word 2002/2003/2007/2010, Microsoft® Excel® 2002/2003/2007/2010, and Microsoft® Outlook® 2002/2003/2007/2010

For details or installation information, see the P-touch Editor Help.

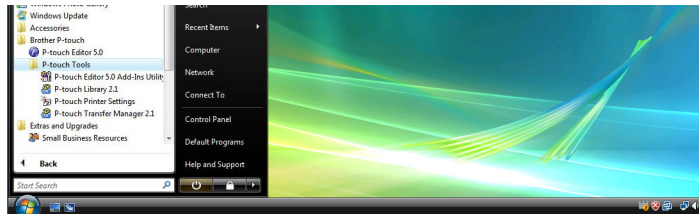
● Registering and canceling the Add-In function



Before running this program, close the Word, Excel® and Outlook® programs.

The following example uses Windows Vista®.

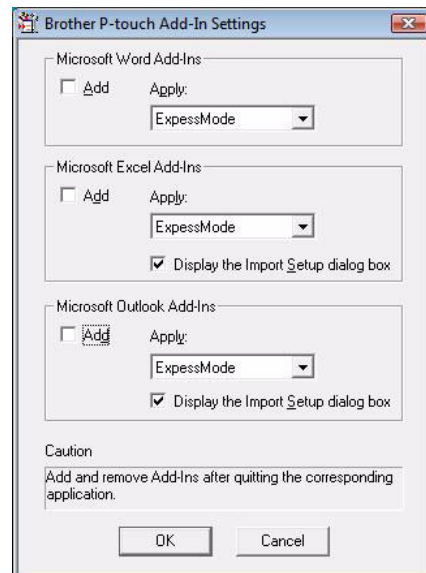
- 1 Click [Start]-[All Programs]-[Brother P-touch]-[P-touch Tools]-[P-touch Editor 5.0 Add-Ins Utility].
The [Brother P-touch Add-In Settings] dialog box appears.



- 2 Click on the checkboxes for the Microsoft application where you would like the P-touch Editor Add-In function button to be installed.

For each Microsoft application you must select which version of the label creation software you would like to open when the P-touch Editor button on the tool bar is clicked.

- Express Mode : Starts Express Mode.
- Professional Mode : Starts Professional mode.
- Print Immediately : Prints the label.



● Microsoft® Word

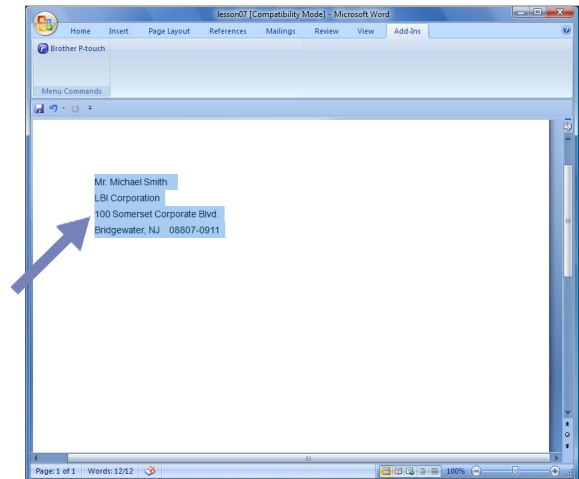
With the Add-In function, you can directly copy the text in Microsoft® Word to a label layout.



If Microsoft® Outlook® is running and Microsoft® Word is chosen as the standard editor, you won't be able to use the Add-In function in Microsoft® Word. Exit Microsoft® Outlook® and restart Microsoft® Word.

Creating labels using Microsoft® Word

- 1 Open a Microsoft® Word document and select the text you want included in the label from your Word document.



- 2 On the Microsoft® Word ribbon/standard toolbar, click .



For details on how to automatically add the text to the Label List, see "How to add the Microsoft® Word text to the Label List shown in the database window" described below.

How to add Microsoft® Word text to the Label List shown in the database window



For first time use, the message "Record data in the Label List?" is displayed. If you click Yes, new records are automatically created in the Label List and the text is added to each field shown below from the next time you register the text. Each time you add new information into the Label List it also records the following information for your reference.

The text	Added field
Date of creation	Date field
The first line	Title field
All lines including the first line	Body field
Detected ZIP/Postal code	Code field

Example of Label List data being stored in the database window in the P-touch Editor screen

	Date	Title	Body	Code	Memo1	Memo2	Memo3	Memo4	Memo5	Memo6
<input type="checkbox"/> 1 ▶	7/19/2007	Mr. Walter Freeman	Mr. Walter Freeman ABC Transporting Corporation 4555 Cumberland PKWY Anytown, USA 95093	95093						

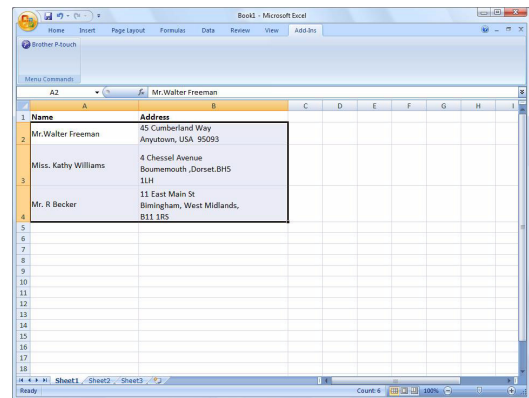
If you clicked No when the message "Record data in the Label List?" was displayed, but want to register, go to [Tools]-[Options], and check "Automatically Record Data Imported With Add-In." in the [Label List] tab.


● Microsoft® Excel®

With the Add-In function, you can directly copy text in Microsoft® Excel® to a label layout.

Creating labels using Microsoft® Excel®

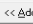
- 1 Open a Microsoft® Excel® worksheet and select the cells of text you want included in the label from your Excel spreadsheet.

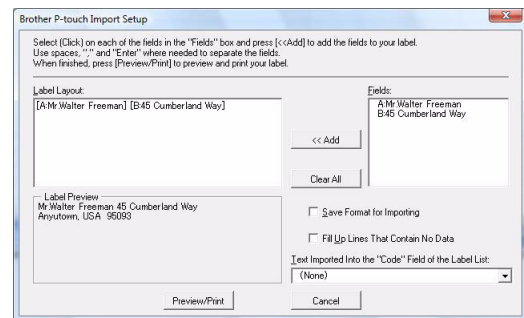


- 2 On the Microsoft® Excel® ribbon/standard toolbar, click . The [Brother P-touch Import Setup] dialog box appears.

- 3 In [Label Layout], make adjustments to the line feed in the cells and click [Preview/Print].



[Label Layout] enables you to change the way your text is displayed/printed. When you choose any listed item in the [Fields] box and click , a new field is added to the [Label Layout] box. You can enter spaces, line feeds, commas, and characters for each cell and print them on a label. You can also remove fields in this screen by highlighting the field and pressing the delete key on your keyboard.



- For details on how to automatically add the text to the Label List, see "How to add text from Microsoft® Excel® to the Label List" described on page 14.
- If you want to include the data in the Code field of the Label List, choose [Text Imported Into the "Code" Field of the Label List] in the [Brother P-touch Import Setup] dialog box.

How to add text from Microsoft® Excel® to the Label List



For first time use, the message "Record data in the Label List?" is displayed. If you click Yes, new records are automatically created in the Label List and the text is added to each field shown below from the next time you register the text. Each time you add new information into the Label List it also records the following information for your reference.

The text	Added field
Date of creation	Date field
The first line in the text that is specified in the Label Layout	Title field
All lines including the first line in the text specified in the Label Layout	Body field
Content of cell specified in [Text Imported Into the "Code" Field of the Label List]	Code field

	Date	Title	Body	Code	Memo1	Memo2	Memo3	Memo4	Memo5	Memo6
<input type="checkbox"/> 1	7/19/2007	Mr. Walter Freeman 45 Cumberland Way	Mr. Walter Freeman 45 Cumberland Way Anytown, USA 95093		Mr. Walter Freeman	45 Cumberland Way Anytown, USA 95093				
<input type="checkbox"/> 2	7/19/2007	Miss. Kathy Williams 4 Chessel Avenue	Miss. Kathy Williams 4 Chessel Avenue Boumemouth ,Dorset.BH5 1LH		Miss. Kathy Williams	4 Chessel Avenue Boumemouth ,Dorset.BH5 1LH				
<input type="checkbox"/> 3	7/19/2007	Mr. R Becker 11 East Main St	Mr. R Becker 11 East Main St Birmingham, West Midlands, B11 1RS		Mr. R Becker	11 East Main St Birmingham, West Midlands, B11 1RS				

If you clicked No when the message "Record data in the Label List?" was displayed, but want to register, go to [Tools]-[Options], and check "Automatically Record Data Imported With Add-in."

● Microsoft® Outlook®

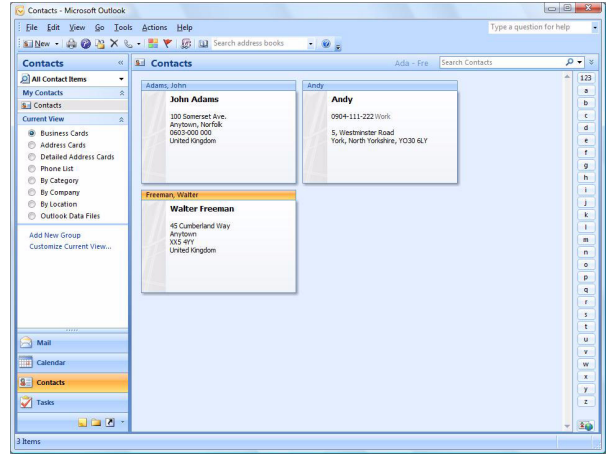
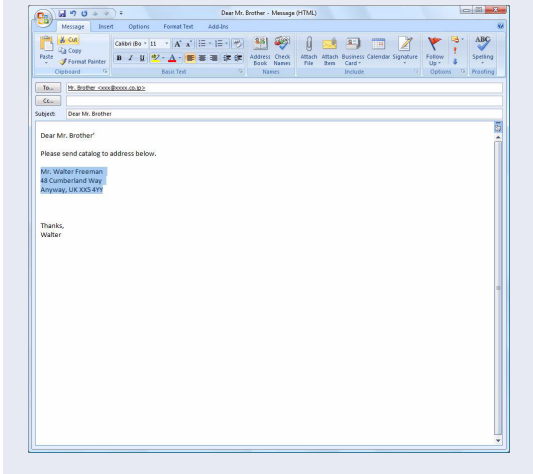
With the Add-In function, you can directly copy the text in Microsoft® Outlook® to a label layout. Items you can import are: Contacts, Calendar items, Deleted Items, Drafts, Inbox, Journal, Notes (text in the Notes dialog box is not available), Outbox, Sent Items and Tasks windows.

Creating labels using the Contacts data in Microsoft® Outlook®

1 Open Microsoft® Outlook® Contacts and highlight the contact information you want to include.



In Microsoft® Outlook®, you can include not only the Contact data but also the text in a message, as you can do in Microsoft® Word.



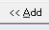
2 On the Microsoft® Outlook® ribbon/standard toolbar, click .

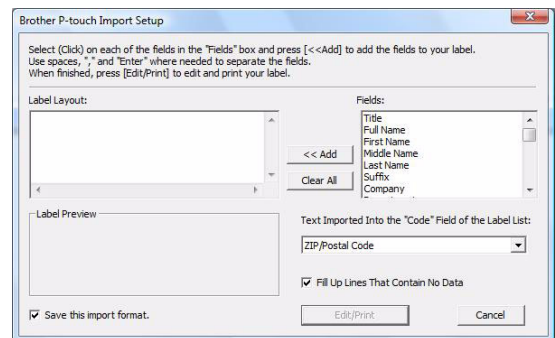


For details on how to automatically add the text to the Label List, see "How to add text from Microsoft® Outlook® to the Label List" described on page 16.

3 In [Label Layout], make adjustments to the line feed in the cells and click .



[Label Layout] enables you to change the way your text is displayed/printed. When you choose any listed item in the [Fields] box and click , a new field is added to the [Label Layout] box. You can enter spaces, line feeds, commas, and characters for each cell and print them on a label. You can also remove fields in this screen by highlighting the field and pressing the delete key on your keyboard.



- For details on how to automatically add the text to the Label List, see "How to add text from Microsoft® Outlook® to the Label List" described on page 16.
- If you want to include the data in the Code field of the Label List, choose [Text Imported Into the "Code" Field of the Label List] in the [Brother P-touch Import Setup] dialog box.

How to add text from Microsoft® Outlook® to the Label List



For first time use, the message "Record data in the Label List?" is displayed. If you click Yes, new records are automatically created in the Label List and the text is added to each field shown below from the next time you register the text. Each time you add new information into the Label List it also records the following information for your reference.

The text	Added field
Date of creation	Date field
The first line in the text that is specified in the Label Layout	Title field
All lines including the first line in the text specified in the Label Layout	Body field
Content of cell specified in [Text Imported Into the "Code" Field of the Label List]	Code field

	Date	Title	Body	Code	Memo1	Memo2	Memo3	Memo4	Memo5	Memo6
<input type="checkbox"/> 1	7/19/2007	Walter Freeman	Mr. Walter Freeman 45 Cumberland Way							
<input type="checkbox"/> 2	7/19/2007	John Adams	Anytown, Norfolk100 Somerset Ave.100 Somerset Ave. Anytown, Norfolk 0603-000 000 United KingdomJohn AdamsJohn Adams							
<input type="checkbox"/> 3	7/19/2007	Andy	York, North Yorkshire5, Westminster Road5, Westminster Road York, North Yorkshire, YO30 6LYAndyAndy							

If you clicked No when the message "Record data in the Label List?" was displayed, but want to register, go to [Tools]-[Options], and check "Automatically Record Data Imported With Add-in."

How to use the P-touch Address Book

This section describes the procedure for creating labels from contacts efficiently using the P-touch Address Book. The P-touch Address Book is valid for Windows® only. The following example uses Windows® XP.

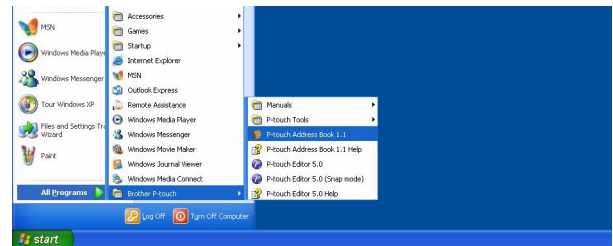
▶ Starting the P-touch Address Book

1 Click [Start]-[All Programs]-[Brother P-touch]-[P-touch Address Book 1.1].



You can also start the P-touch Address Book using the following methods (only if you created the shortcut during installation):

- Double-click the shortcut icon on the desktop.
- Click the shortcut icon on the Quick Launch bar.

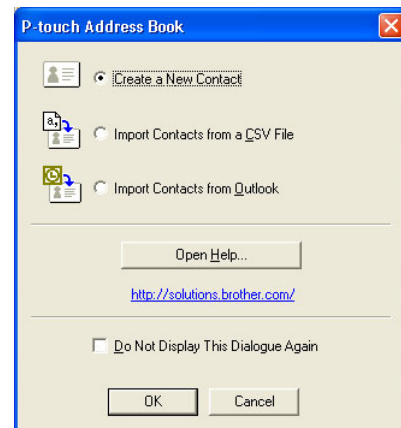


When the P-touch Address Book is launched, the [Startup] dialog box appears, letting you make settings to create new contacts, import CSV format data or Outlook® contacts, and so on.

2 In the [Startup] dialog box, specify the P-touch Address Book operation you want to perform and click .

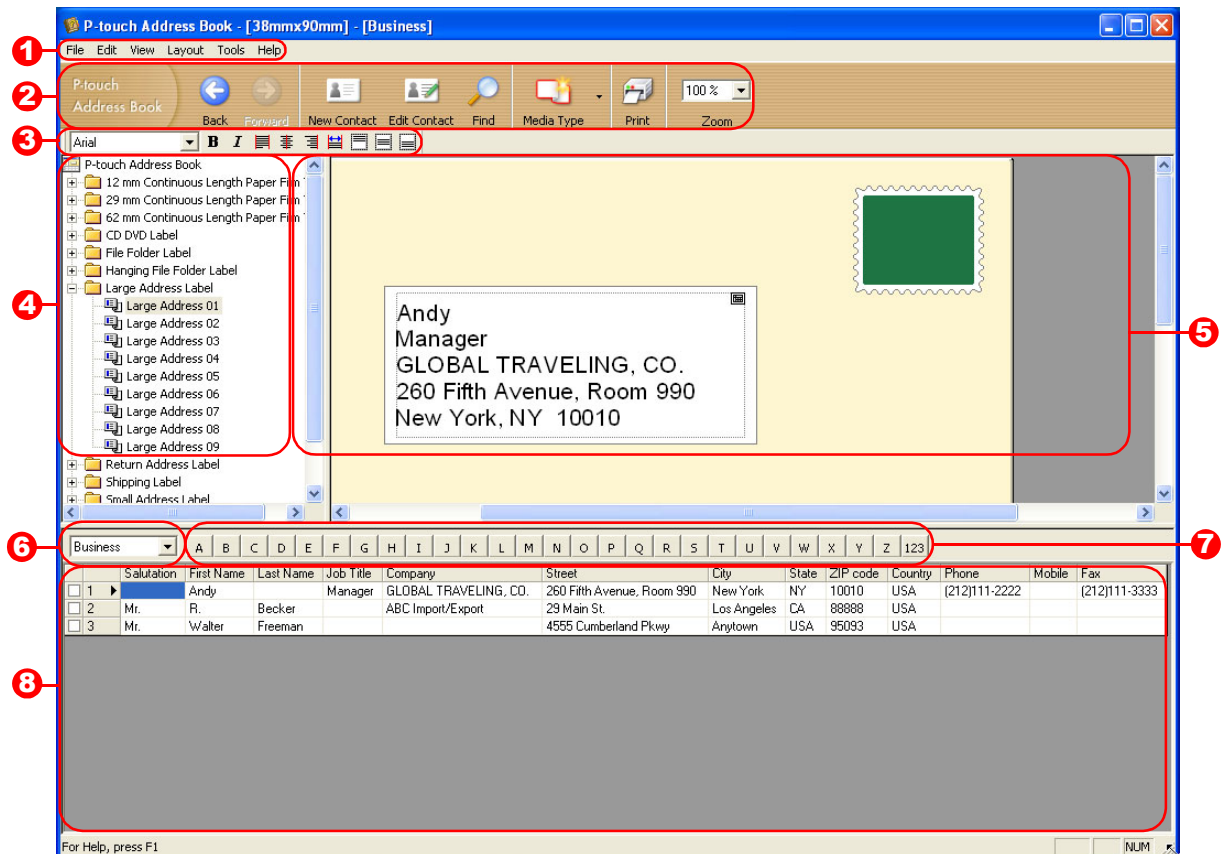
- When [Create a New Contact] is chosen, the layout window appears.
- When [Import Contacts from a CSV File] or [Import Contacts from Outlook] is chosen, you can import contacts in other formats.
- Click to open the P-touch Address Book Help files.

The P-touch Address Book Help offers detailed information on available features and explains how to use the P-touch Address Book.



Layout window


The layout window consists of the following eight sections:



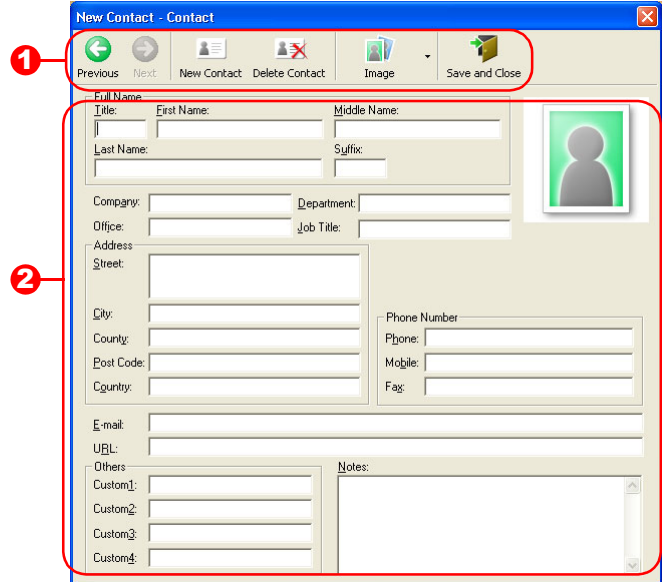
- 1** Menu bar
Commands are categorized under each menu (File, Edit, View, and Layout, etc.) by function.
- 2** Standard toolbar
Provides a group of frequently used commands (such as New Contact, Edit Contact, Find, Print, etc.).
- 3** Text toolbar
Used to adjust text attributes such as font size and alignment for text formatting.
- 4** Layout style selection view
Displays layout styles stored in the folder.
- 5** Layout work area
Used to display or edit a layout that uses the layout style in the layout style selection view.
- 6** Contact list combo box
Displays the contact list that is currently specified. You can choose from [Personal], [Business], [Other1], [Other2] and [Other3].
- 7** Index tab
You can search within the field in Record View. Click [Tools]-[Sort] to open the [Sort] dialog box, and specify the field to be searched using [Key1].
- 8** Record View
Displays the contact data in each field. The data can also be edited (added to, deleted or modified).

▶ Creating a new contact

This section explains how to create a new contact.







- 1 Click **[File]-[New Contact]**. Or, click . The [New Contact] dialog box appears.

- 2 Enter data for each item.



- 1 New Contact form toolbar

The following commands are categorized in the menu:

Icon	Button name	Function
	Previous	Displays the previous contact.
	Next	Displays the next contact.
	New Contact	Displays the New Contact form window for a new contact.
	Delete Contact	Deletes the contact that is currently chosen.
	Image	Allows you to insert an image for a contact from a file or a camera currently connected to the PC. The following file types are supported: <ul style="list-style-type: none"> • Bitmap (*.bmp, *.dib) • JPEG file (*.jpg, *.jpeg) • TIFF file (uncompressed) (*.tif) • GIF file (*.gif) • Icon (*.ico) • Windows Meta File (*.wmf, *.emf) (*Image adjustment is not allowed.) • PNG file (*.png)
	Save and Close	Saves the contact and closes the [New Contact] dialog box.

- 2 Contact form

Used to enter each item such as name, address, phone number, company information, and e-mail address for the new contact.

- 3 When you finish entering the data, click  to store.

How to use P-touch Transfer Manager (QL-650TD / QL-580N / QL-1050 / QL-1060N only)

P-touch Library: This application allows you to manage P-touch label templates and other data on the PC.

You can print a label from the P-touch Library using the machine.

P-touch Transfer Manager: This application can transfer label template data to the printer's main unit and can make backups of data transferred to the printer's main unit.

The Transfer function is needed to use P-touch Template. For details on P-touch Template, see the P-touch Template manual in the [Tools] folder on the CD-ROM. (For QL-580N/QL-1050/QL-1060N only)

To transfer the templates via the network, you need to prepare BRAdmin Professional or Web BRAdmin.

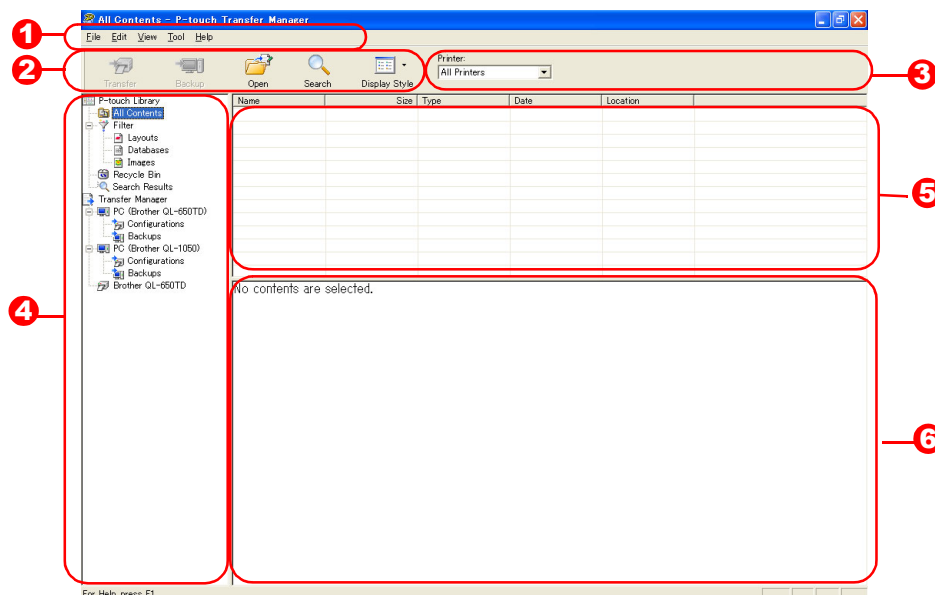
Download them from our website. (For Network models only)

▶ Starting up P-touch Transfer Manager

- 1 Click the [Start] button, then choose [All programs (Programs)] - [Brother P-touch] - [P-touch Tools] - [P-touch Transfer Manager 2.1].







P-touch Transfer Manager starts up.

Layout window



- 1 **Menu**
Commands are categorized into each menu (File, Edit, View, Tool, and Help) by function.
- 2 **Toolbar**
Provides icons for frequently used commands. Click on one to access that command.
- 3 **Selecting the printer model (Only for P-touch Transfer Manager)**
Select the printer model to send data to. When you select a printer, only the data that can be sent to the selected printer is displayed in the list view.
- 4 **Folder view**
Displays a list of folders. When you select any folder, the data in the folder selected is displayed in the list view on the right.
- 5 **List view**
Displays the data in the selected folder.
- 6 **Preview**
Displays a preview of the label template selected in the list view.

Explanations of the Icons

Icon	Button name	Function
	Transfer (Only for P-touch Transfer Manager)	Transfers the label templates and other data on your PC to the printer (when the USB interface cable is connected).
	Backup (Only for P-touch Transfer Manager)	Backs up the data you have transferred to the Brother printer using P-touch Transfer Manager.
	Open	Edits the selected data.
	Print (Only for P-touch Library)	Prints the selected label template with the printer.
	Search	Searches the data managed with the P-touch Library.
	Display Style	Changes the file display format.

▶ Transferring label templates from the PC to the printer via USB

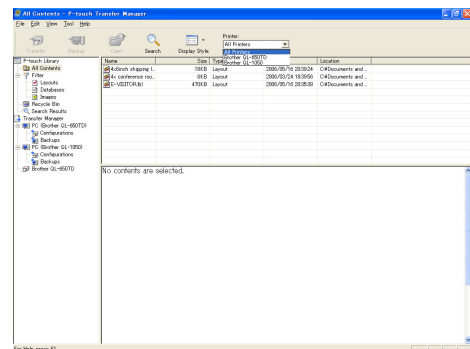


Make sure to disconnect the network cable when transferring templates via USB.

1 Select the printer to transfer data to.

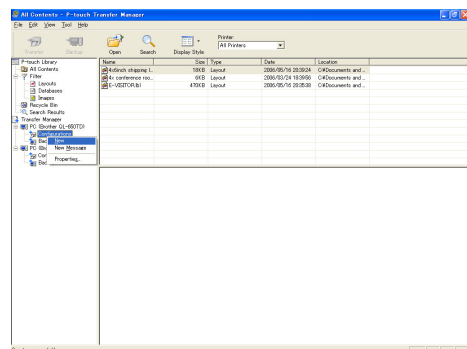


Before transferring data, check that the PC and the printer are correctly connected with a USB cable and that the printer power is On.



2 Right click the [Configurations folder], then select [New] and create a new folder.

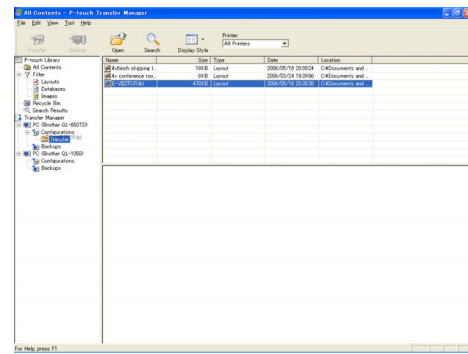
Here, as an example, we create the folder "Transfer".



3 Drag the transfer data to the folder you just made.

Drag the transfer data from All Contents, Layouts or another folder under Filter.

When transferring multiple sets of data, move all the transfer data to the folder you made.

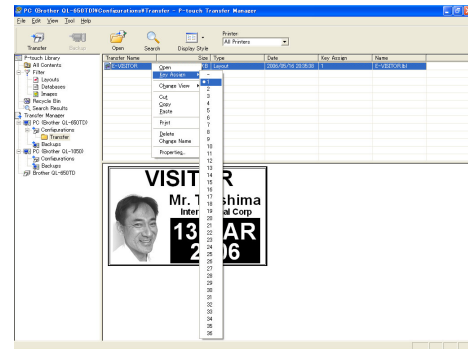


4 Key Assign numbers are automatically assigned to transfer data within the folder you made in the previous step.

To change a number, right click the data name in the list view, then select a key assign number.

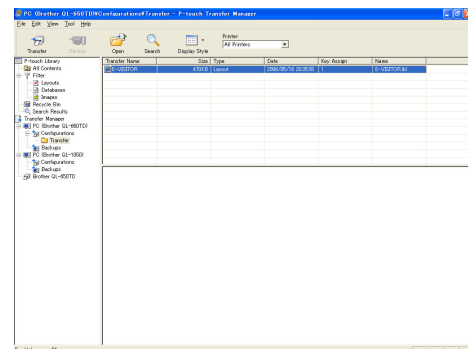


- Key Assign is necessary for transfer of data other than message texts.
- If you change the Key Assign number used for data already transferred to the printer main unit, it is overwritten. You can check the Key Assign number used for data already transferred to the printer by backing up the data as explained in "Backing up label templates" (page 23).
- You can click the data name for transfer data to change it to a new name. Depending on your printer model, there may be restrictions on the number of characters that can be used for a data name.



5 Select the data or folder you want to transfer, then click .

The transfer confirmation message is displayed.

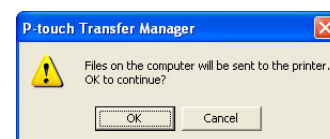


6 Click [OK].

The data in the folder selected in the folder view is transferred to the printer.



- If you have selected specific data in the list view, only the selected data is transferred to the printer.



▶ Backing up label templates

This section describes how to transfer label templates and other data in the printer to the PC.



- Valid only when the USB cable is connected.
- Backed up data cannot be edited on the PC.
- For some printer model specifications, it may not be possible to retransfer backed-up data to a printer of a different model than the one the data was originally backed up from.

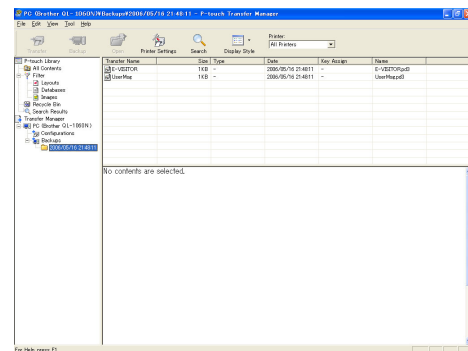
1 Connect the PC and the printer by USB cable and switch ON the printer's power.

The printer model name is displayed in the folder view.

If you select a printer model name in the folder view, the current data transferred to the printer is displayed.

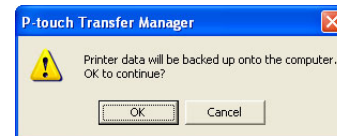
2 Select the printer to back up from, then click .

The backup confirmation message is displayed.



3 Click [OK].

A new folder with a name containing the date is created under the printer folder, and all the printer's data is transferred to that new folder.



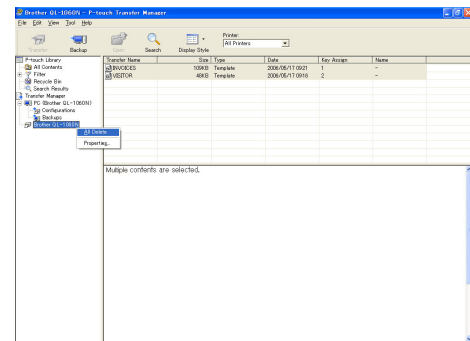
● Deleting all the printer data

1 Connect the PC and the printer by USB cable and switch the printer's power ON.

The printer model name is displayed in the folder view.

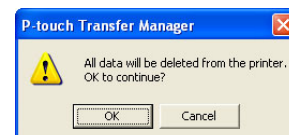
2 Right click the printer, then select [All Delete].

The confirmation message is displayed.



3 Click [OK].

All data in the printer is erased.



▶ Transfer the templates to the printer via the network (QL-580N / 1060N only)

To transfer the templates to the printer via the network, you need BRAdmin Professional or Web BRAdmin. Download it from our website first.

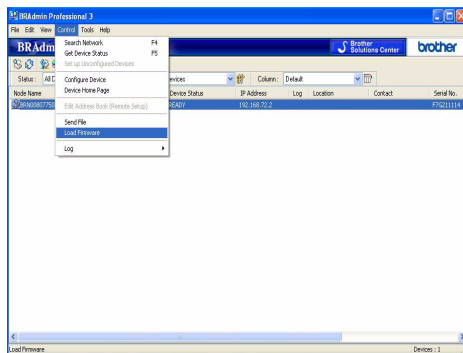
The printer names and pictures in the following screens may differ from your purchased printer. The screens may vary depending on the model.

- 1 Create the template you want to transfer with P-touch Editor 5.0, then choose [File]-[Transfer Template...] menu to register.

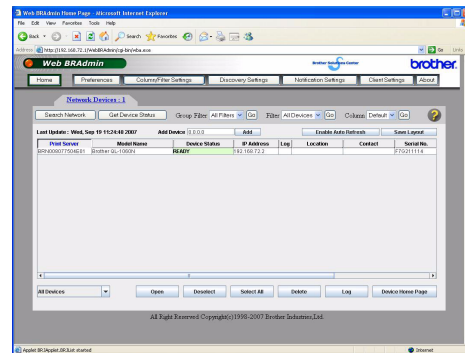
- 2 Click  to save the registered template in .blf format.

- 3 Start BRAdmin Professional (1) or Web BRAdmin (2).

(1) Choose the printer and [Load Firmware] from the [Control] menu.

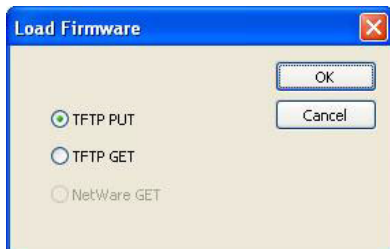


(2) Choose the printer and click the [Open] button in the lower part of the screen.

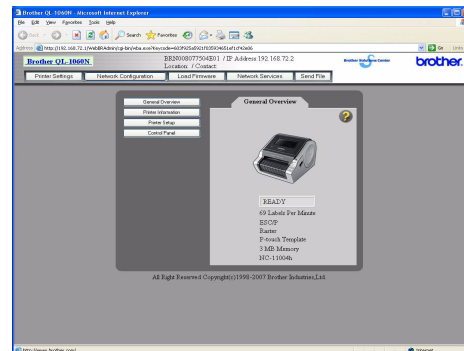


- 4 Choose Load Firmware function of the BRAdmin Professional (1) or Web BRAdmin (2).

(1) Choose [TFTP PUT] and click the [OK] button.

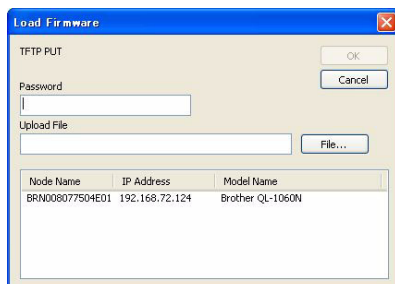


(2) Click the [Load Firmware] button in the upper part of the screen.

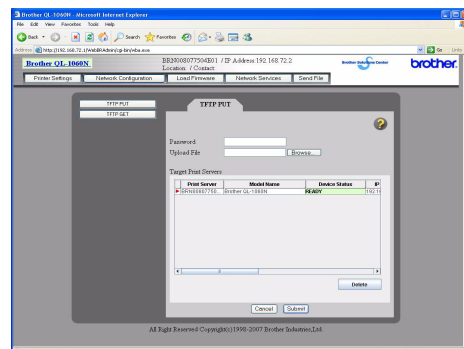


- 5 Choose the file in .blf format which you saved in step 3 and load it to the printer.

(1) Choose the .blf file and click the [OK] button.



(2) Choose the .blf file and click the [Submit] button.



The default password is "access".

How to use the P-touch Library

▶ Starting up the P-touch Library

You can start up the P-touch Library to edit and print labels.

Click the [Start] button, then choose [All programs (Programs)] - [Brother P-touch] - [P-touch Tools] - [P-touch Library 2.1].

The P-touch Library starts up.

● Opening and editing data

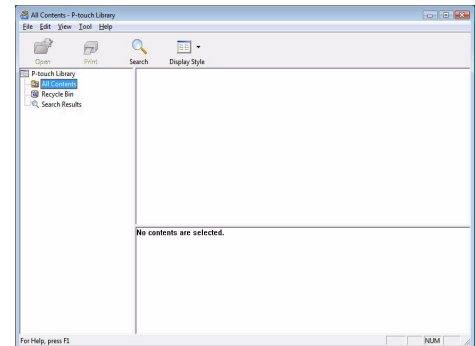
Choose the data you want to edit, then

click  .

The application associated with the data is opened and you can edit the data.



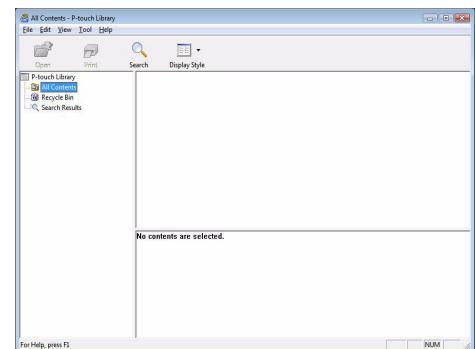
The application that starts up depends on the data. For example, for a P-touch template, P-touch Editor starts up.



● Printing labels

Choose the label template you want to print, then click  .

The label is printed by the connected printer.

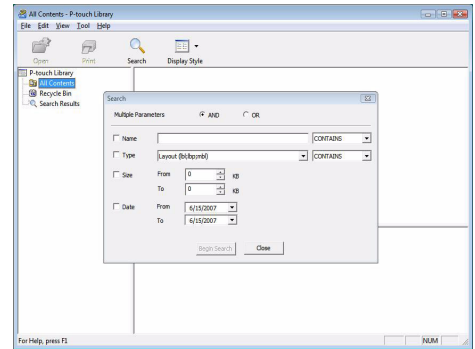


▶ Searching labels

You can search label templates registered in the P-touch Library.

1 Click  .

The [Search] dialog box is displayed.



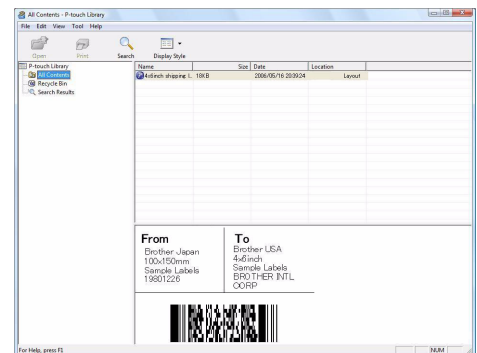
2 Check the items to be used as search conditions and set the search items.

The search items that can be set are as follows.

Settings	Details
Multiple Parameters	Set the method for combining multiple search items. If you choose AND, files are searched for those that satisfy all the conditions. If you choose OR, files are searched for those that satisfy any one of the conditions.
Name	Input the data name to search for.
Type	Choose the data type to search for.
Size	Set the data size to search for.
Date	Set the date and time at which the data to search for was last modified.

3 Click [Begin Search].

The search is started.



Close the [Search] dialog. The search results can be checked in the Search Results in the folder view.



You can register the data in the P-touch Library by dragging and dropping it into the All contents folder or its list view. To have label templates created with P-touch Editor automatically registered in the P-touch Library, use the following method.

1. From the P-touch Editor menu, choose [Tools] - [Options].
2. In the [Options] dialog box [General] tab, click [Registration Settings].
3. Choose the timing for registering label templates created with P-touch Editor, then click [OK].

How to use P-touch Editor Lite (QL-700 and Windows® only)

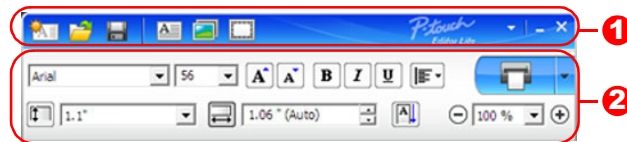
It is not necessary to install the driver or software for P-touch Editor Lite.

With P-touch Editor Lite, you can create various simple label layouts quickly and easily.





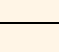
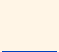

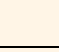

1 Double-click the .

P-touch Editor Lite starts.



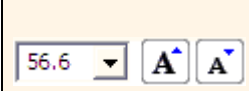



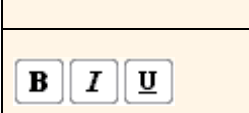

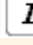

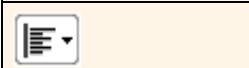

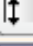
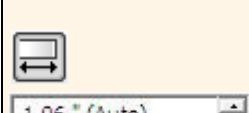

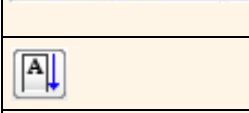
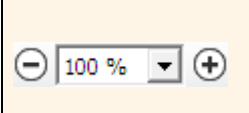



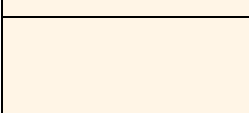


Layout window

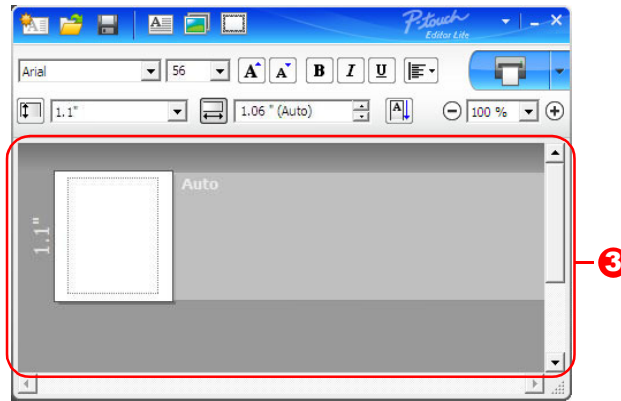


1 Command Toolbar

Icon	Function
	Displays the New screen for creating a new label.
	Opens a saved file with P-touch Editor Lite.
	Saves the data to your PC, etc, but not to the labeler.
	Inserts a new text box (convenient when creating labels containing both single and multiple lines of text).
	Inserts an image onto your label. From file: Inserts an image stored on your PC. Screen capture: Inserts the selected area of the PC screen as a graphic. Symbol: Inserts one of your PC's built-in symbols.
	Inserts a frame.
	Displays the menu. The menu includes all P-touch Editor Lite functionality.
	Minimizes P-touch Editor Lite.
	Exits P-touch Editor Lite.

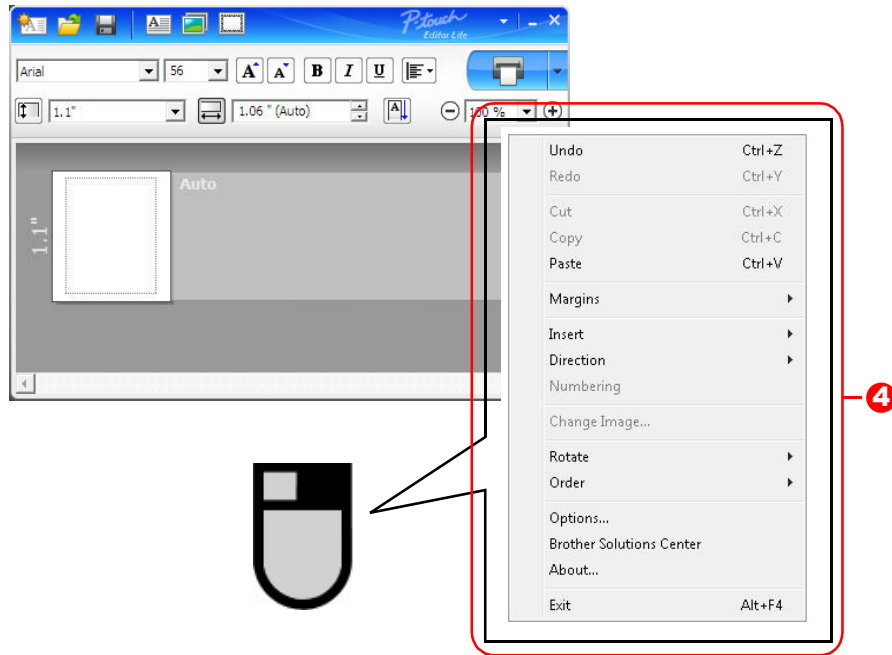
2 Property Toolbar

Icon	Function
	Click  to change the font.
	Click  to specify the font size. You can adjust the font size up or down one level by clicking  or  .
	Specifies the font style:  Bold  Italic  Underline
	Specifies the alignment of text in a text box.
	Sets the width of the tape. Click  to automatically detect the width of the inserted tape.
	Sets the length of the label. Click  to automatically adjust the length of the label to accommodate the entered text.
	Sets/cancels the label direction to vertical.
	Click  to set the zoom factor for the Label View. You can also change the zoom factor by clicking  or  .
	Click  to print normally or  to print with options. Auto Cut: Each label is automatically cut after printing. Cut at end: Cuts labels after the last label is printed. Copies: Prints multiple copies of a label.



3 Label View

Display	Function
	This label view is displayed when the software is started. The width of tape currently set is displayed on the left of label image. When "Auto" is shown on the right, the length of tape is automatically adjusted to the length of text.
	You can drag the label border to manually change the length and width of the label. Move the pointer to the label area's border. When the blue line appears, drag to the desired length or width.
	You can adjust the size of the P-touch Editor Lite window. Simply move the pointer over an edge of the P-touch Editor Lite window and drag to adjust the size once the pointer changes to an arrow.
	Guidelines are sometimes displayed when moving objects. They are shown when the object is aligned at the left, right, top, or bottom edge of Printable area, or in the center. In the illustration to the left, the guidelines indicate that the object is centered at the top edge of the tape.
	Inserted text boxes, images, and frames are treated as objects. Objects are surrounded by handles (indicated by eight blue points).
	Indicates that an object is selected.
	The pointer changes to an arrow when moved over a handle. You can change the size of the object by dragging.
	You can move objects by dragging when the pointer is a crosshair. For text objects, the pointer only changes to a crosshair over the border of the object.



4 Other Functions (available on the menu displayed by right-clicking the mouse)

Menu	Do this
Undo	Click Undo to undo the last operation.
Redo	Click Redo to redo an undone operation.
Cut Copy Paste	Select the text area (or object) that you want to cut or copy and select Cut or Copy . Click in the destination area and select Paste .
Margins	Always disabled for QL.
Insert	Click Insert . Select Text box to insert text onto the label. Select From File to insert an image stored on your PC. Select Screen Capture to insert the selected area of the PC screen. Select Symbol to insert one of your PC's built-in symbols. Select Frame to insert one of P-touch Editor Lite's built-in frames.
Direction	Select the text object and click either Horizontal Text or Vertical Text to change the direction of the text.
Numbering	Select the number or letter within your text and click Numbering to consecutively advance the number or letter on each label. Click <input type="checkbox"/> to the right of the Print button and click Print Options . Check the Numbering box and enter the number of labels for printing in the Count field. Click the Print button.
Change Image	Select the image and click Change Image to replace the current image with a different image.
Rotate	Rotate objects to 0° , 90° , 180° or 270° .
Order	Select one of the objects and click Order , then select Bring to Front , Send to Back , Bring Forward , or Send Backward to set the order of each object in the layer.
Options	Click Options . Select either mm (mm) or inches (in) to set the measurement unit setting. Select the P-touch Editor Lite language. Restart the application to apply the new selected " Language ". Select either Display New Value after Printing or Reset to Original Value after Printing to set the numbering option.
Brother Solutions Center About Exit	Click Brother Solutions Center to go to the web site for assistance and information. Click About to learn about the P-touch Editor Lite version. Click Exit to exit P-touch Editor Lite.

Downloading a New Label Collection Category to P-touch Editor / Updating P-touch Editor Software and P-touch Editor Lite (QL-700 only)

Using the P-touch Update Software, label collection categories can be downloaded to your PC and printed using P-touch Editor. Furthermore, the software can be upgraded to the latest version using this tool.



- To use the P-touch Update Software, it is necessary to install it from the CD-ROM provided.
- Refer to the "Quick Setup Guide" for details on how to install the Software.
- You must be connected to the internet in order to launch the P-touch Update software.
- Label Collection designs cannot be edited.
- You may find that the software and the contents in this manual are different.
- Upon installation of the P-touch Update Software, an icon will be installed on your desktop for your convenience. To check for new Label Collection designs, simply click the icon to launch the software.

The following example uses Windows Vista®

In the following steps, you will see XX-XXXX. Read "XX" as your QL-700 name.

▶ Downloading a New Label Collection Category to P-touch Editor / Updating P-touch Editor Software

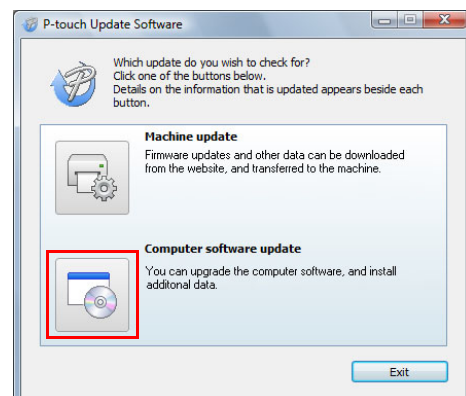
1 Double-click [P-touch Update Software].



- The following method can also be used to start the P-touch Update Software.
- Click [Start], and then select [All Programs] - [Brother P-touch] - [P-touch Update Software].
- If a message is displayed notifying the user that the Editing Software (P-touch Editor) is the latest version when started, click [Yes] and then proceed to step 3.



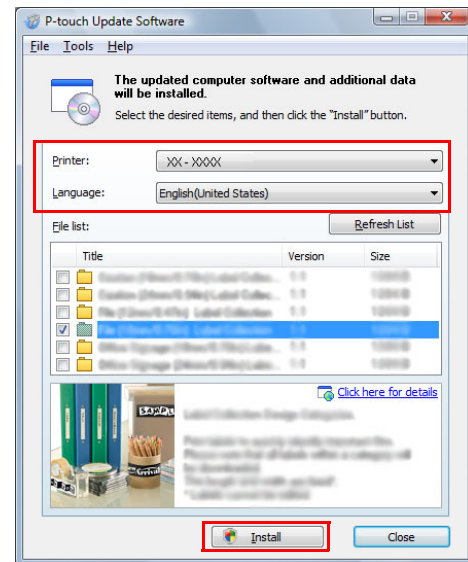
2 Click the [Computer software update] icon.



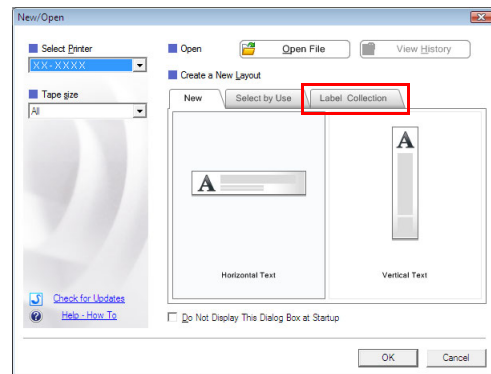
- 3** Select the [Printer] and [Language], select the check box next to the label collection to be installed or the software to be updated, and then click [Install].



- Click "Click here for details" in the upper right to view a web page with specific examples of label collection designs.
- If you are using a Mac, you cannot download a new label collection category to P-touch Editor; however, you can update the P-touch Editor software.



- 4** The installed label collection will be saved to the P-touch Editor [Label Collection] tab.



► Updating P-touch Editor Lite

- 1** Turn the machine on and connect the USB cable.

Confirm the Editor Lite is turned off before connecting the QL-700 to your computer with the USB cable. Press and hold down the Editor Lite button until the Editor Lite lamp turns off.

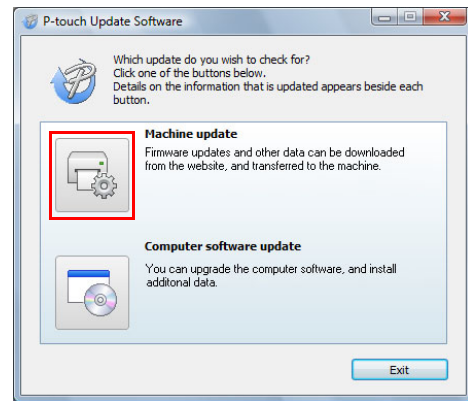
- 2** Double-click the [P-touch Update Software] icon.



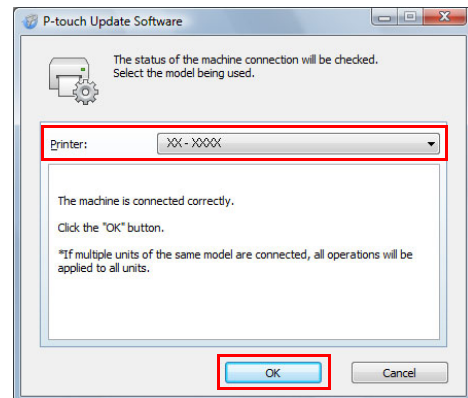
The following method can also be used to start the P-touch Update Software. Click [Start], and then select [All Programs] - [Brother P-touch] - [P-touch Update Software].



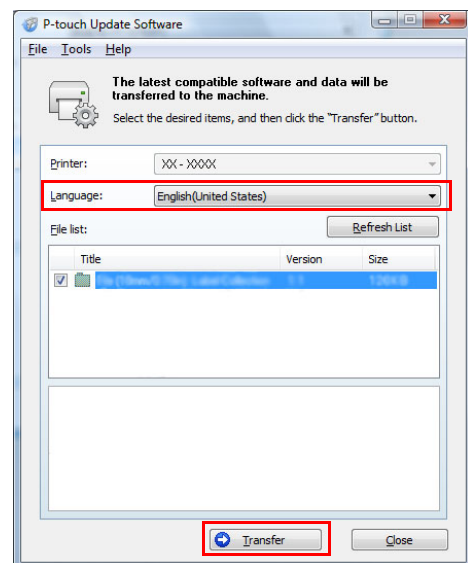
3 Click the [Machine update] icon.



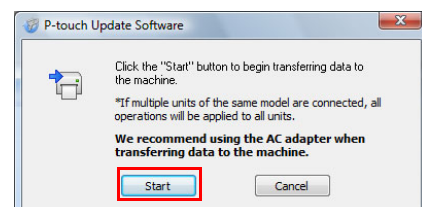
4 Select the [Printer], ensure that [The machine is connected correctly.] is displayed, and then click [OK].



5 Select the [Language], select the check box next to the P-touch Editor Lite software to be updated, and then click [Transfer].

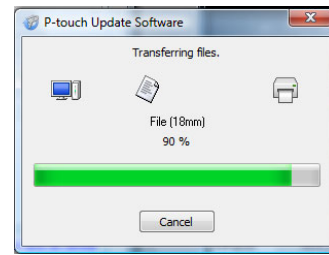


6 Check the content to be updated, and then click [Start] to begin the update.

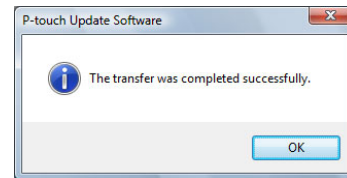


7 The screen on the right is displayed on your computer while the software is being updated.

⚠ Do not turn off the machine during the update process.



8 Click [OK] to complete the update.



9 The display returns to the input screen when the update is complete.

How to use P-touch Editor for Macintosh



This section gives an overview of P-touch Editor. See the P-touch Editor Help for details.

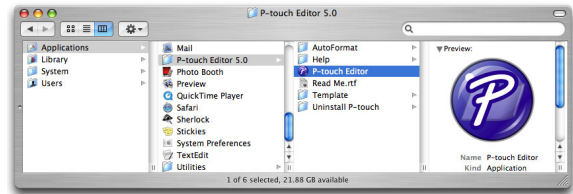
▶ Starting P-touch Editor

- 1 Double-click [Applications] and then [P-touch Editor 5.0].**



If an Alias has been created, double-click the Alias.

The Layout Window is displayed.



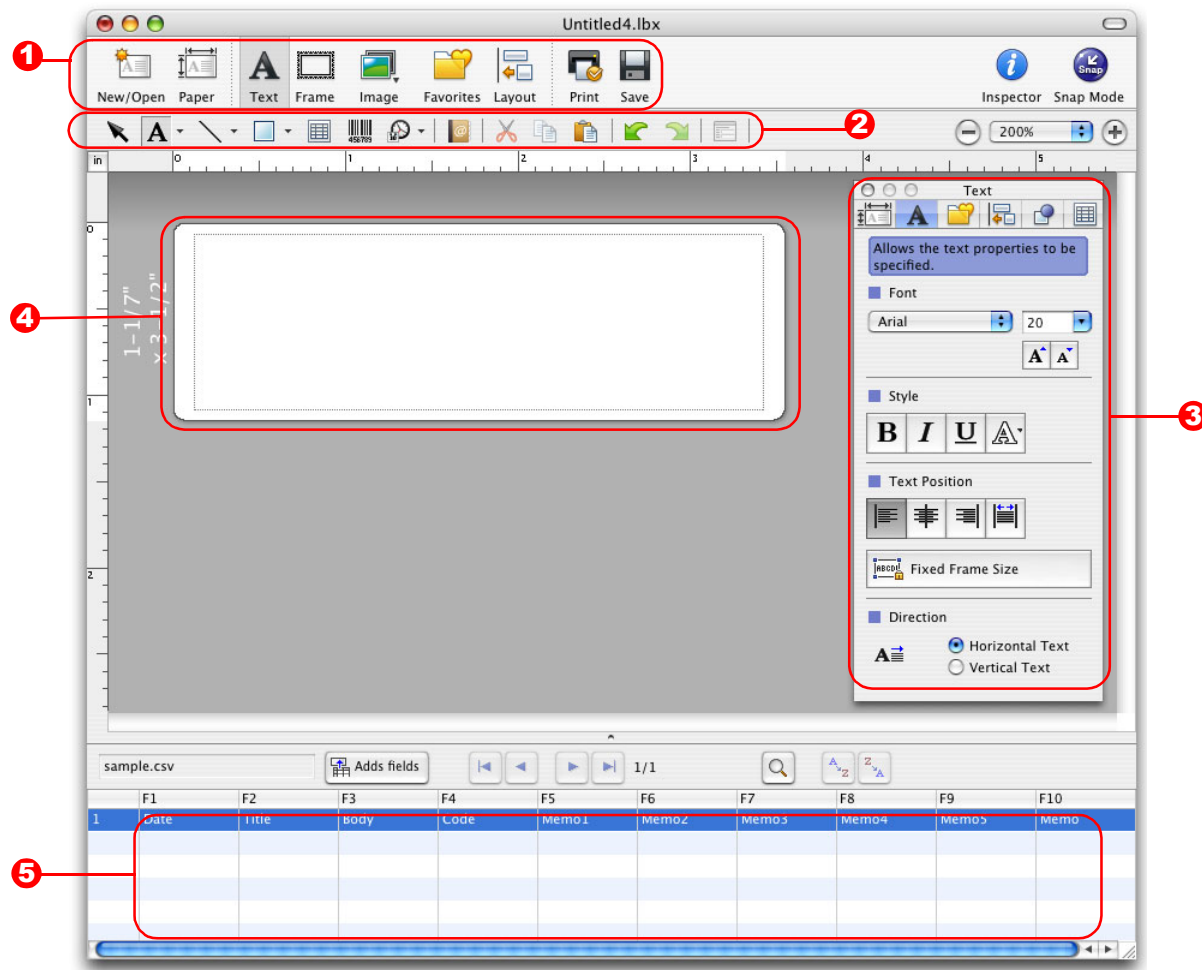
- 2 Double-click the "P-touch Editor" application.**
P-touch Editor starts.

Layout Window

Standard Mode

This mode provides easy label creation with texts and images.

The layout window consists of the following sections:



1 Command bar

Provides commands such as New/Open, Paper, Text, Frame, Image, etc.

2 Draw/Edit toolbar

Provides tools for choosing an object, entering text, drawing graphics, etc.

3 Inspector

Enables you to easily insert and format text, images, etc.

4 Layout window

Used to display and edit objects.

5 Database window

Displays a database.



- The [View] menu allows you to show/hide the toolbars and windows.
- See the P-touch Editor Help for details.

■ Snap Mode

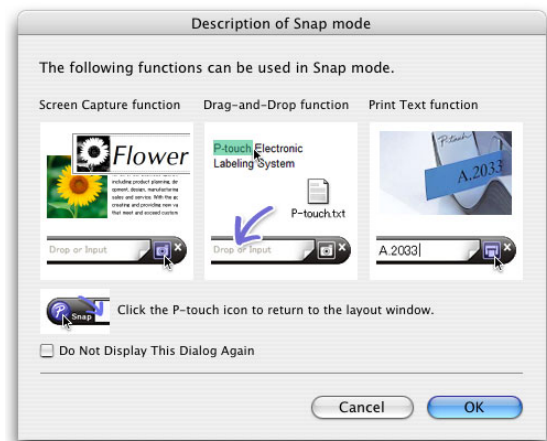
With this mode, you can capture the screen, print it as an image, and save it for future use. To start the Snap mode, follow the steps below.

1 When you click [Snap Mode], the Snap mode description dialog box appears.

Click .



If you put a checkmark in [Do Not Display This Dialog Again], you can go to Snap mode directly from the next time.



2 Snap mode appears.



See the P-touch Editor Help for details.

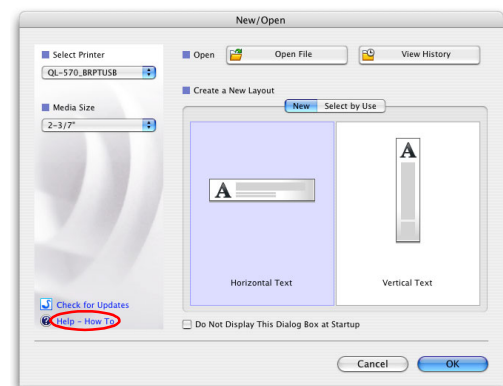


► Start P-touch Editor Help

This section explains how to start P-touch Editor Help for Mac. The following example uses Mac OS X 10.4.9.

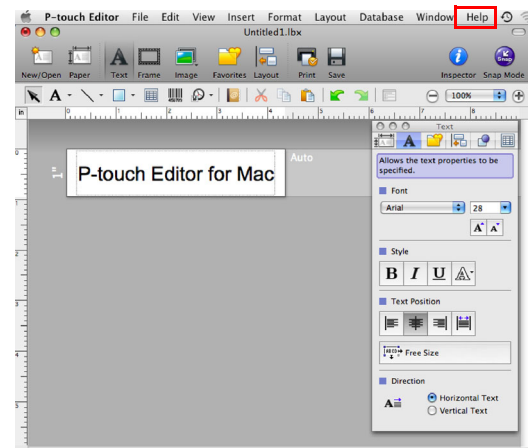
■ From New/Open dialog

In the New/Open dialog, click **Help-How To**.



■ From P-touch Editor

To start the P-touch Editor Help, click **Help** and choose **P-touch Editor Help**.



Printing directly from other applications

You can use this machine to print directly from most Windows® applications, by installing the printer driver.



Because the paper size for this machine is different from other regular printers, you may not be able to print even after installing the driver and application software, unless the application software allows the correct label size to be set.

▶ Setting the Printer Driver

In the following steps, you will see QL-XXX. Read "XXX" as your printer name. The printer names in the following screens may differ from your purchased printer name.

The screens may vary depending on the model. The following example uses Windows Vista®.

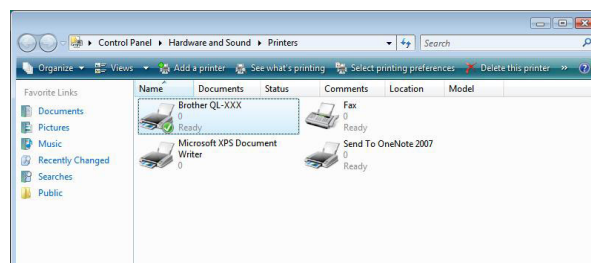
- 1** • **For Windows Vista® / Windows® 7**
From [Control Panel], go to [Hardware and Sound] and open [Printers (Windows Vista®) / Devices and Printers (Windows® 7)].
- **For Windows® XP**
From [Control Panel], go to [Printers and Faxes].



For details, see Windows® Help.

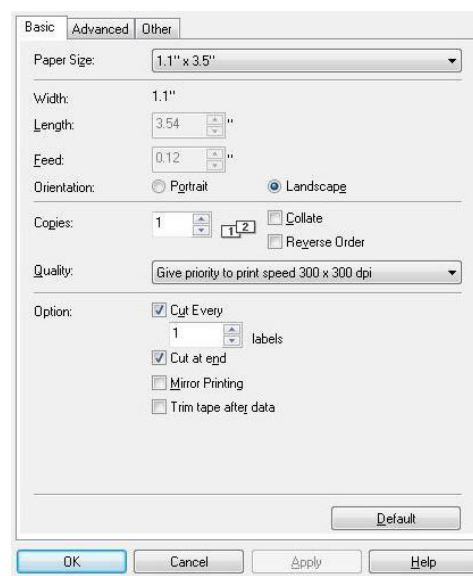
- 2** Choose "Brother QL-XXX", and right click and select [Select printing preferences].

The [Brother QL-XXX printing preferences] dialog box appears.



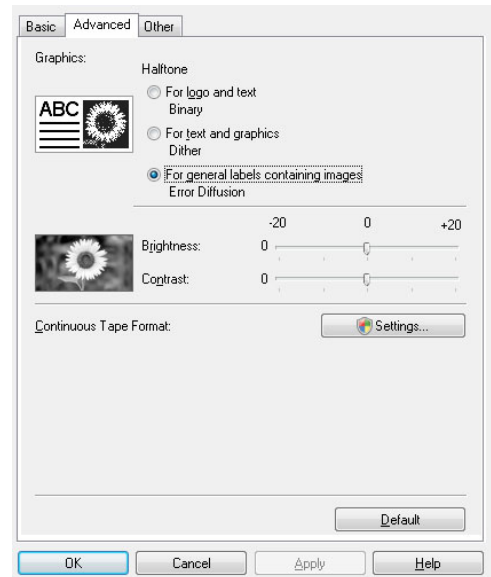
- 3** Choose each item and click [OK].

- [Basic] Tab
You can set the paper size, number of copies, quality and cut option.

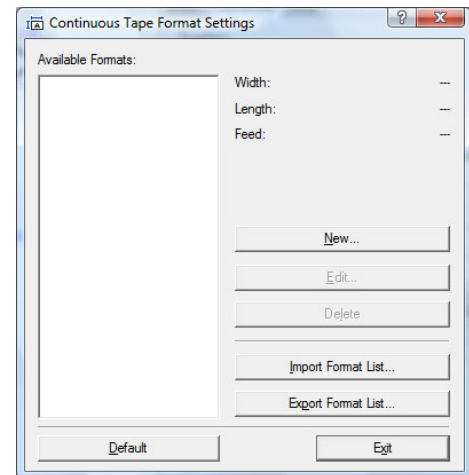


- [Advanced] Tab
You can set graphics options ("Halftone", "Brightness" and "Contrast") and "Continuous Tape Format".

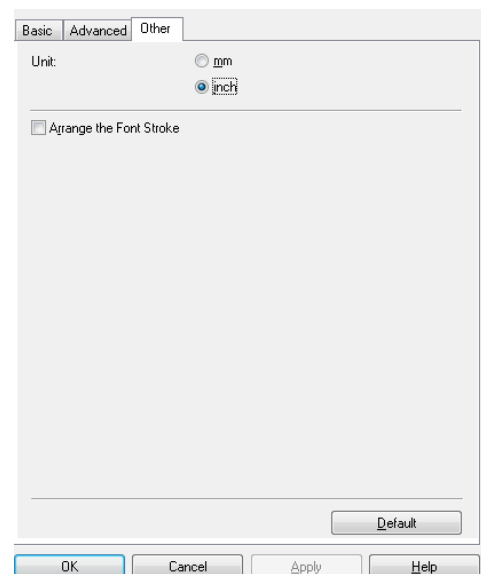
You can change the Label Format or create a new Label Format from the [Continuous Tape Format] dialog box which appears by clicking [Settings...].



You can set the format name ("Name") and size ("Width", "Length", and "Feed"), and click [Default].



- [Other] Tab
You can change "Unit" (mm or inch).



4 Close the [Printers] window.

▶ Printing from other applications

We will use Microsoft® Word as an example.

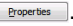
In the following steps, you will see QL-XXX. Read "XXX" as your printer name. The printer names in the following screens may differ from your purchased printer name.

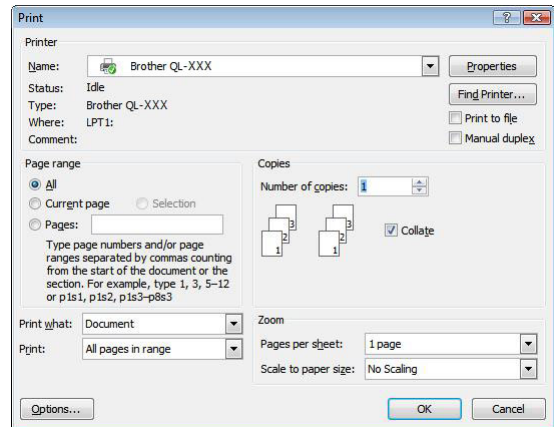
The screens may vary depending on the model.

1 Click and .

The [Print] dialog box appears.

2 Choose "Brother QL-XXX".

You can change the settings of the Printer Driver from the [Properties] dialog box which can be displayed by clicking .



3 Click to close the [Print] dialog box.

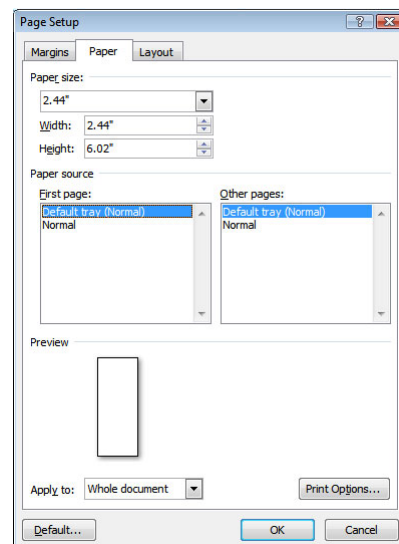
4 When you click [Page Layout], the ribbon appears. Then click the mark to the right of Page Setup.

The [Page Setup] dialog box appears.

5 Click the [Paper] tab, and choose the paper size that you want to print.

You can also choose the Label Format that you have added in → [Page 37](#).

You can also set the page margins in the [Margins] tab.



6 Click to return to your document.

The size of the Microsoft® Word window is adjusted to the paper size that you have just chosen. Edit the document as needed.

7 Click and , then click .

The specified labels are printed.