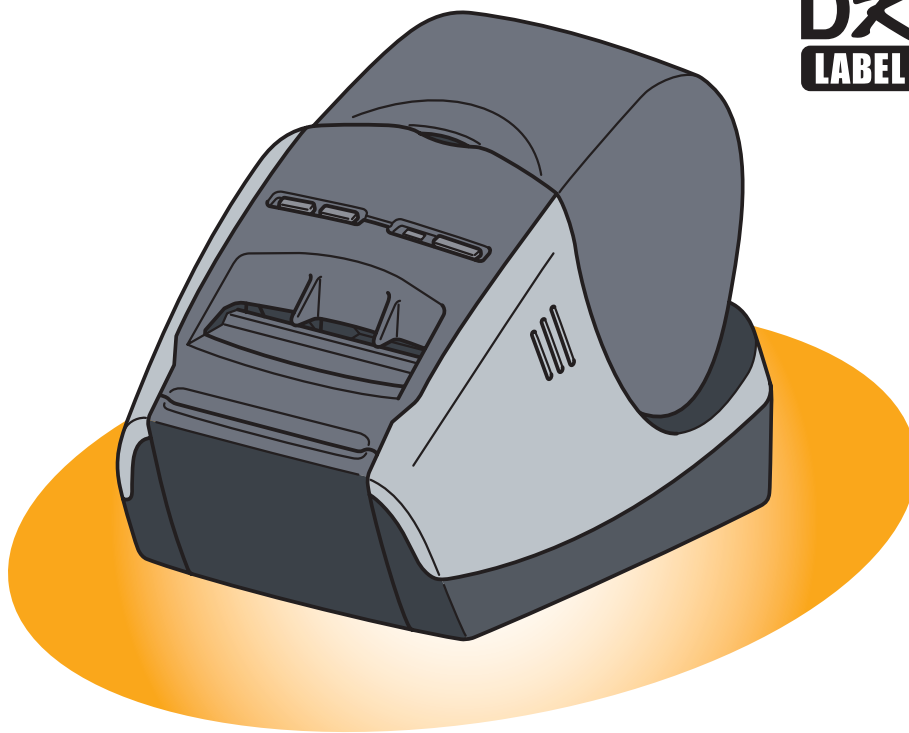


brother

QL-570

Label Printer

User's Guide



DK **DK**
LABEL **TAPE**

Contents

Contents	2
Introduction	3
About This Guide	3
Manual Structure	3
Symbols Used in this Guide	3
Creating Labels	4
Label Creation Overview	4
From Label Creation to Printing	4
How to use the P-touch Editor for Windows	6
Starting P-touch Editor	6
Start P-touch Editor Help	10
Creating Labels with Other Applications	12
How to Use the P-touch Address Book	18
Starting the P-touch Address Book	18
Creating a New Contact	20
How to Use P-touch Library	21
Starting up the P-touch Library	21
Searching labels	22
How to use the P-touch Editor for Mac	23
Starting the P-touch Editor	23
Start P-touch Editor Help	25
Appendix	26
Printing Directly from Other Applications	26
Setting the Printer Driver	26
Printing from Other Applications	28
Uninstalling Software	29
For Windows	29
For Mac	30
LED Lamp	32
Maintenance	33
Print head maintenance	33
Roller maintenance	33
Label outlet maintenance	34
Troubleshooting	35
Potential types of problems	35
Specifications	36
Product Specifications	36
Operating Environment	36

Introduction

The Brother QL-570 label printer (hereafter referred to as "the machine") enables you to quickly and easily print custom labels created with the label software, P-touch Editor.

▶ About This Guide

This guide (PDF) is included on the CD-ROM.



In this guide, when the mouse pointer changes to  you can just click to jump to the corresponding pages.

For the basic functions of Adobe® Reader®, see the Adobe® Reader® Help files.

▶ Manual Structure

The following guides are provided to help you use the machine correctly, and understand all features. Make sure to read and understand them before using the machine.

● Setup & Operation Guide

- Read the Setup and Operations Guide before reading this User's Guide.
- The guide includes information you should read before using the machine, such as general precautions for use, installation and setting up of the main unit, and how to create.
- Also included is information describing how to install the accompanying software to connect the machine to a computer.

● User's Guide (this guide)

This guide describes how to create labels using the P-touch Editor software that has been installed on a computer connected to the machine.



• If you use a Windows®, this guide can be viewed from the P-touch Setup application when it is run from the CD-ROM.

After installing this guide on the computer, you can also view it from the Start menu.

• If you use a Mac®, see the PDF files in the [Manuals] folder on the CD-ROM.

▶ Symbols Used in this Guide

The symbols used throughout this guide are as follows:



This symbol shows information or directions that should be followed. Ignoring them may result in injury, damage, or failed operations.



This symbol shows information or directions that can help you better understand and use the machine more efficiently.

Creating Labels

Label Creation Overview

This section describes the general procedure for creating labels using the machine. For details on step-by-step instructions, see Help files.

► From Label Creation to Printing

1 Choose the type of label you want to create. There is a variety to choose from.

Label examples

LBI	
Department	Planning Dept.
Serial No.	0011154
Device No.	E6200-A4C

2 Prepare the appropriate DK Roll for the label you want to create.

The machine is supplied with one or more sample rolls. (Other rolls can be purchased separately.)

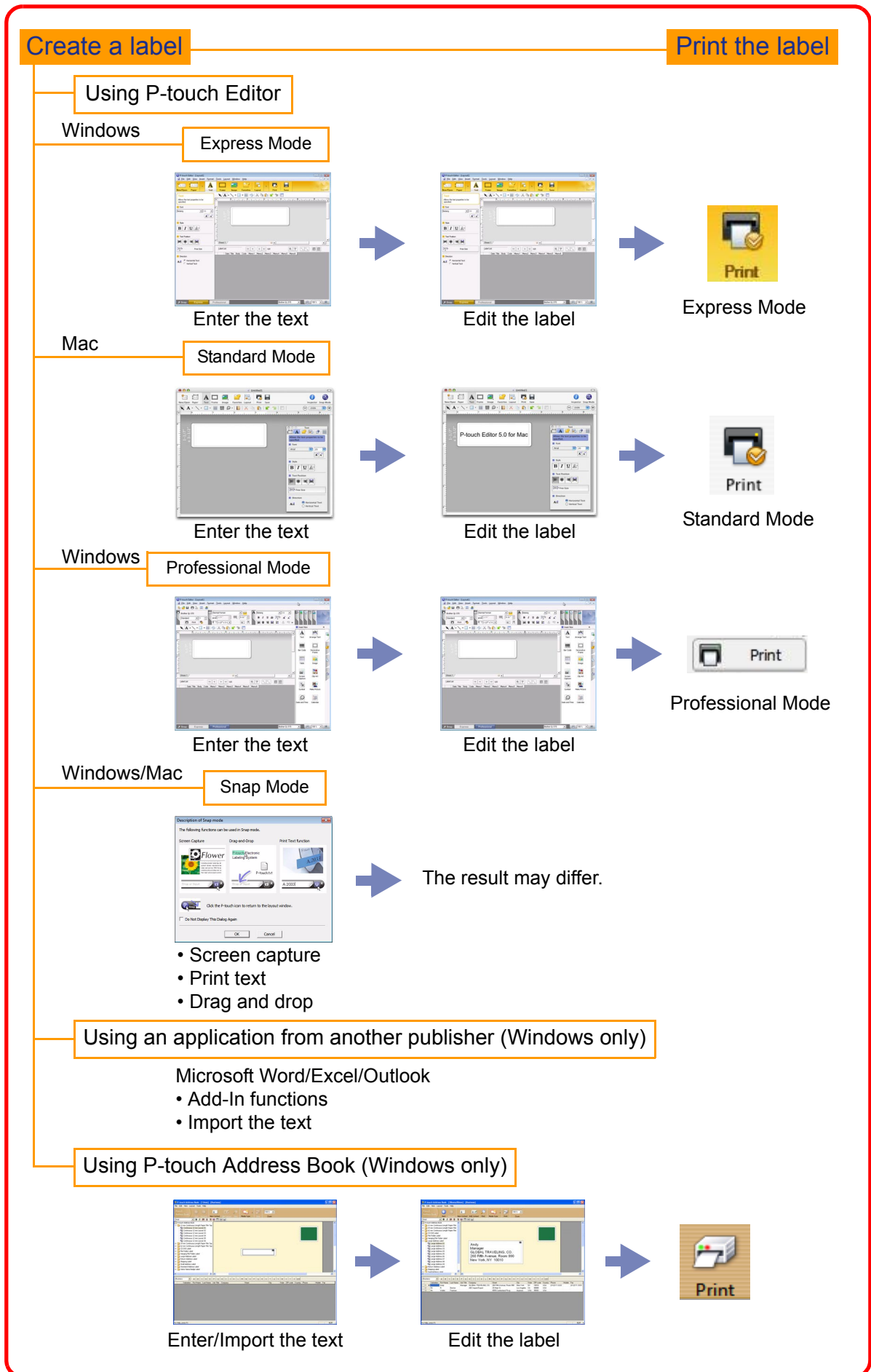
Choose the appropriate DK Roll for the type of label you will create.

Install the DK Roll.

→ Setup & Operation Guide

→ Setup & Operation Guide

3 Create and print the label.



How to use the P-touch Editor for Windows

This section explains the procedure for starting P-touch Editor. With P-touch Editor, you can create various kinds of labels.

See the P-touch Editor Help for samples of various kinds of labels and details on creating, printing, and saving the labels. The following is the example for Windows Vista™.

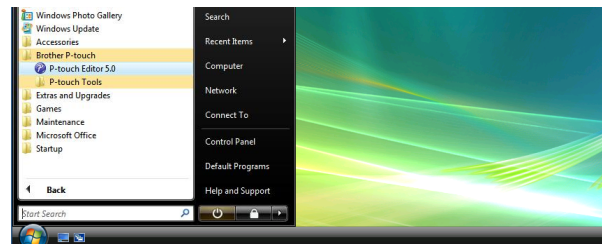
▶ Starting P-touch Editor

1 Click [Start]-[All Programs (Programs)]-[Brother P-touch]-[P-touch Editor 5.0].



You can also start P-touch Editor using the following methods (only if you created the shortcut during installation):

- Double-click the shortcut icon on the desktop.
- Click the shortcut icon on the Quick Launch bar.



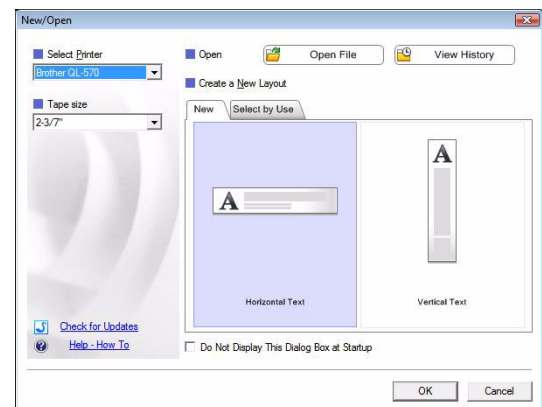
When P-touch Editor is launched, the [New/Open] dialog box appears, allowing you to choose whether you want to create a new label layout or open an existing label.



To specify how the P-touch Editor works when it starts, click [Tools]-[Options] to display the [Options] dialog box. In the [General] tab, you can choose the setting in the [Operations] list box in the [Startup Settings]. Normally, choose [Display Startup Dialog Box].

2 Choose an option in the [New/Open] dialog box and click .

- You can choose the label printer and media size.
- When you choose [Open File], the [Open] dialog box appears. You can choose and open the file you have created and stored previously.
- When you choose [View History], the [History] dialog appears. You can choose from recently created labels.
- When you choose [New], choose either vertical writing style or horizontal writing style.
- When you choose [Select by Use], you can choose by label applications.
- When you choose [Help-How To], the P-touch Editor Help appears.
The Help files allow you to learn step by step how to create a label layout.
- When you choose [Check for Updates] with a computer connected to the Internet, you will be taken to the Brother Solutions Center. Use this Brother Solutions Center to check for the latest software downloads and FAQs.

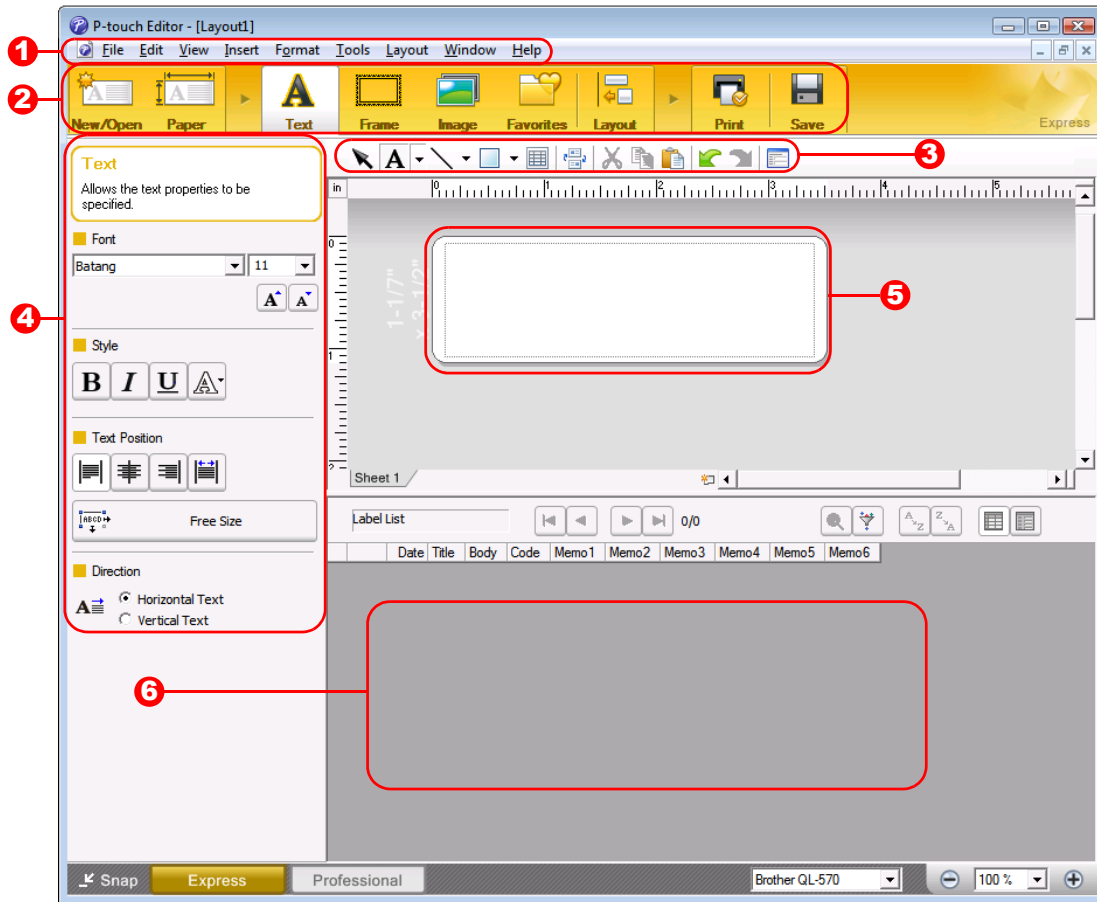


Layout window

■ Express Mode

This mode provides easy label creation with texts and images.

The layout window consists of the following sections:



- 1** Menu bar
Commands are categorized under each menu (File, Edit, View, and Insert, etc.) by function.
- 2** Command bar
The command bar contains the New/Open, Paper, Text, Frame, Image, etc.
- 3** Draw/Edit toolbar
Provides tools for choosing an object, entering text, drawing graphics, etc.
- 4** Property bar
You can easily insert and format text, image, etc.
- 5** Layout window
The layout window is used to display and edit objects.
- 6** Database window
Displays a database.

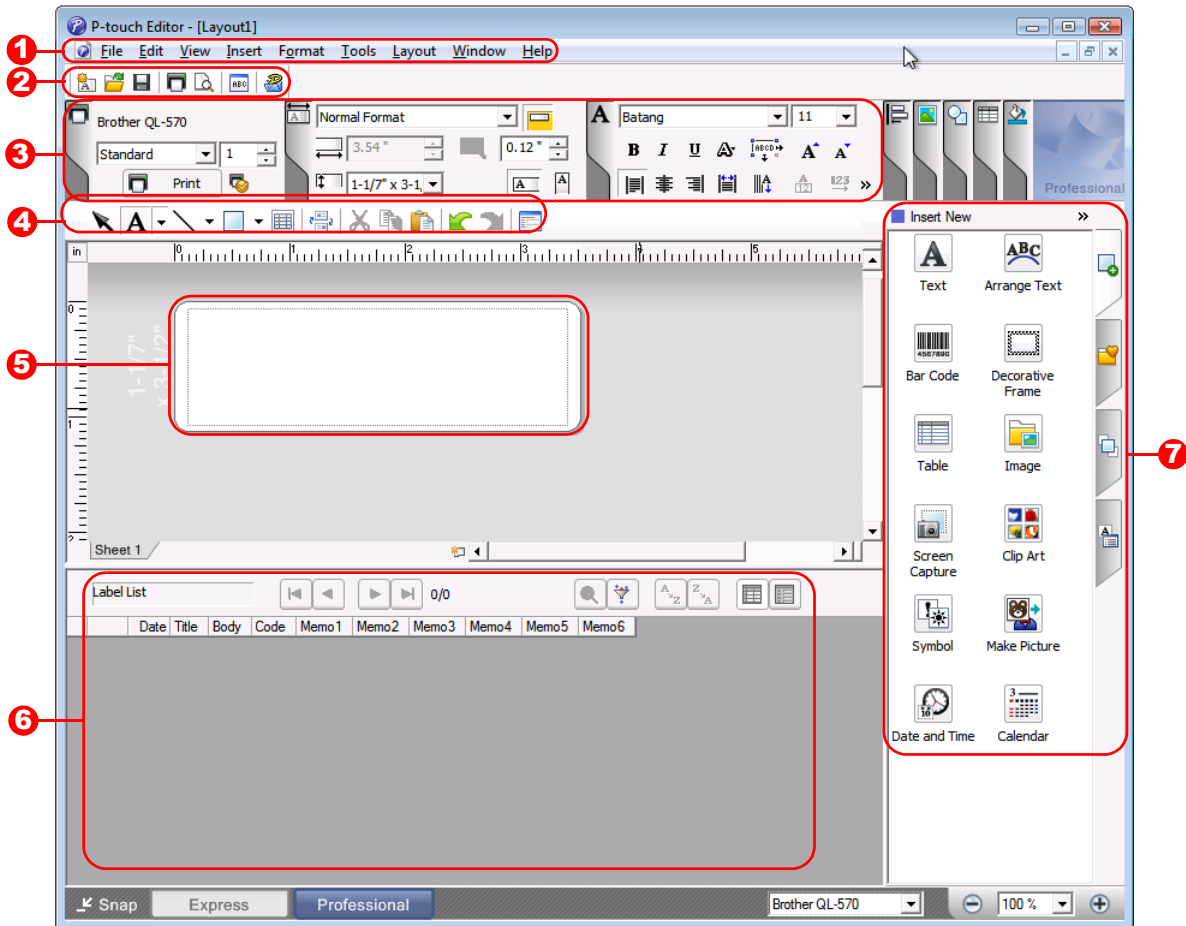


- The [View] menu allows you to show/hide the toolbars, Property pallet, and windows.
- See the P-touch Editor Help for details.

Professional Mode

This mode provides full-scale label creation from creating the templates.

The layout window consists of the following sections:



1 Menu bar

Commands are categorized under each menu (File, Edit, View, and Insert, etc.) by function.

2 Standard toolbar

A group of frequently used commands (New Layout, Open, Save, Print, etc.) are provided in this toolbar.

3 Property pallet

The property pallet contains the Print, Paper, Text, Layout, and property boxes. Click on the left side of each pallet to show/hide the box.

4 Draw/Edit toolbar

Provides tools for choosing an object, entering text, drawing graphics, etc.

5 Layout window

The layout window is used to display and edit objects.

6 Database window

Displays a database.

7 Side bar

Selecting the tab, you can easily insert and format text, barcodes, frames, tables, figures, sort, the objects, etc.



- The [View] menu allows you to show/hide the toolbars, pallet, and windows.
- See the P-touch Editor Help for details.

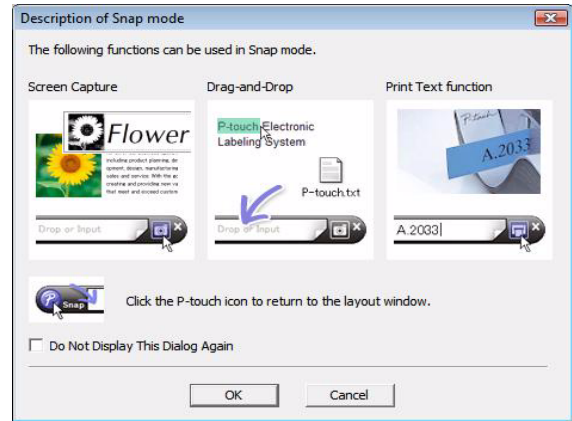
■ Snap Mode

With this mode, you can capture the screen, print it as image, and save it for future use. To start the snap mode, follow the steps below.

1 When you click [Snap Mode], the description of the snap mode dialog appears. Click .



If you put a checkmark on the [Do Not Display This Dialog Again], you can go to the snap mode directly from next time.



2 The snap mode appears.



See the P-touch Editor Help for details.

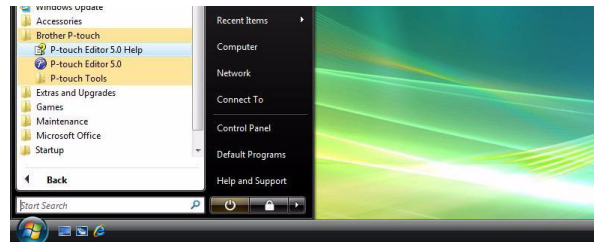


▶ Start P-touch Editor Help

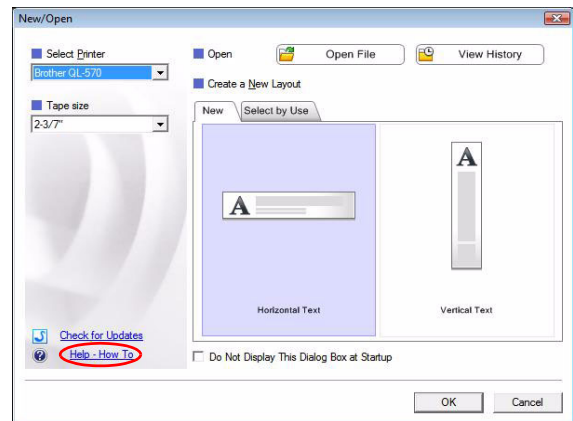
This section explains how to start P-touch Editor Help for Windows. The following is the example for Windows Vista™.

■ Start from Start button

- 1** To start P-touch Editor Help, click the **Start** button on the task bar, point to **All Programs (or Programs)**. Click **Brother P-touch** and **P-touch Editor 5.0**.

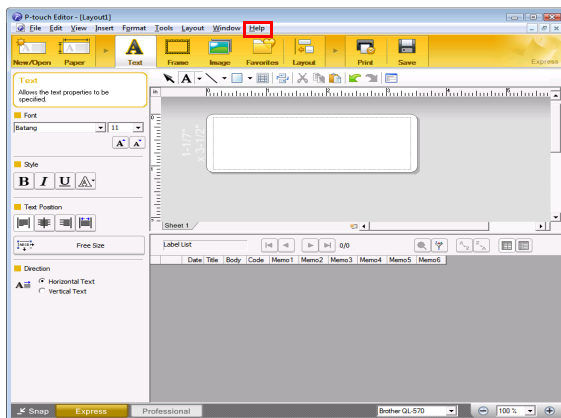


- 2** In the New/Open dialog, click **Help-How To**.

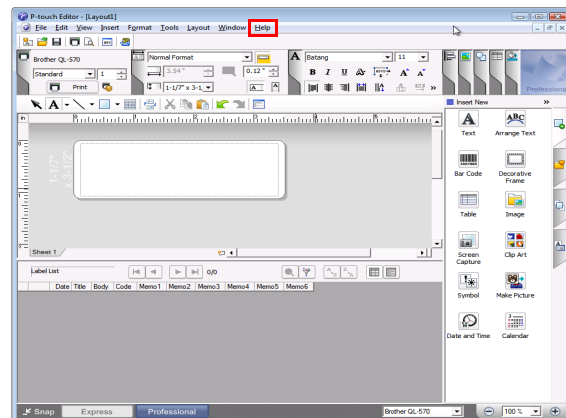


■ Start from P-touch Editor

Click **Help** menu and choose **P-touch Editor Help**.



Express Mode




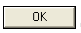
Professional Mode

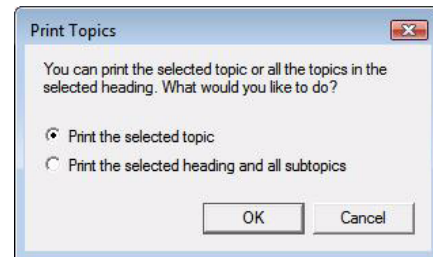
● Printing the Help description

The information given in P-touch Editor Help can be printed. Use your normal printer to print the P-touch Editor Help information.


1 In the [Contents] tab, choose any topic you want to print.

2 Click  on the Toolbar.

3 Choose the range of topics to be printed, and click .



4 Specify the [Printer] item and click .

 Choose a normal printer that supports general paper sizes, such as Letter.

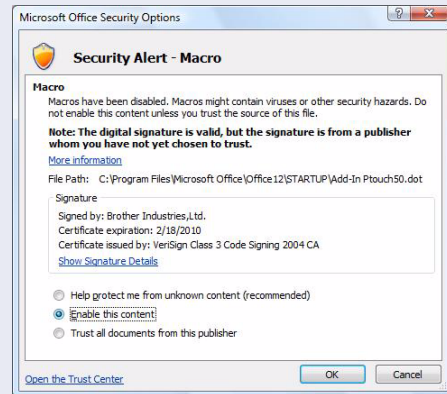
▶ Creating Labels with Other Applications

When installing the software, if you choose the Add-In function, a P-touch icon will be automatically added onto the Microsoft® Word, Excel, and Outlook® toolbar. (Only if Microsoft® Word, Excel, Outlook® are already installed on your computer.) The Add-In function is valid for Windows only.

In each application, by choosing the text you want to print and clicking on the P-touch icon, you can create and print labels quickly and easily.



- The Add-In function supports the following applications: Microsoft® Word 97/2000/2002/2003/2007, Microsoft® Excel 97/2000/2002/2003/2007, and Microsoft® Outlook® 2000/2002/2003/2007
- After the Add-In function is installed into Microsoft® Word, Excel, or Outlook®, the [Security Options] dialog box may appear when starting these applications, depending on the application's security settings. If this dialog box appears, check the [Always trust macros from this source] checkbox, and click on [Enable Macros]. For details on security settings, see the Help files for the application.



For details or installation information, see the P-touch Editor Help.

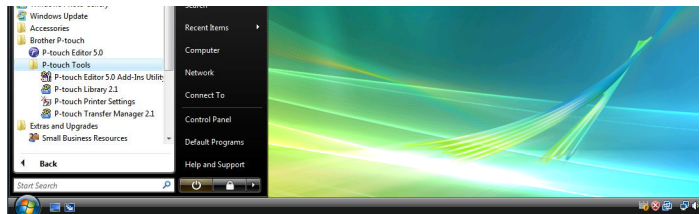
● Registering and canceling the Add-In function




Before running this program, close the Word, Excel and Outlook® programs.

1 Click [Start]-[All Programs(Programs)]-[Brother P-touch]-[P-touch Tools]-[P-touch Editor 5.0 Add-Ins Utility].

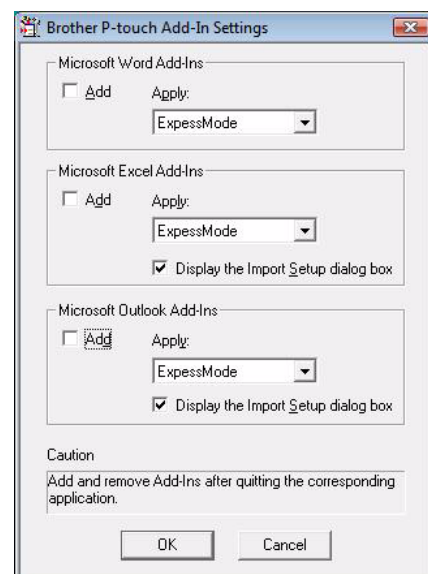
The [Brother P-touch Add-In Settings] dialog box appears.



2 Click on the checkboxes for the applications in which the Add-In function is to be used, and turn off the checkboxes for the others.

[Apply] is used to specify what action is taken when the  (Add-In button) is pressed in each application.

- Express Mode : Starts Express Mode.
- Professional Mode : Starts Professional mode.
- Print Immediately : Prints the label.

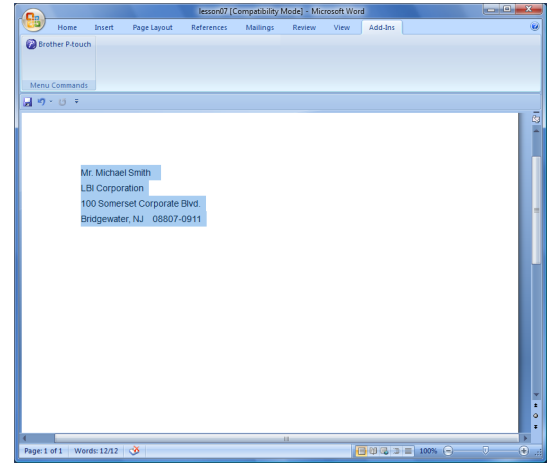


● Microsoft Word

With the Add-In function, you can directly copy the text in Microsoft® Word to a label layout. If Microsoft® Outlook® is running and Microsoft® Word is chosen as the standard editor, you won't be able to use the Add-In function in Microsoft® Word. Exit Microsoft® Outlook® and restart Microsoft® Word.

Creating labels using Microsoft Word

- 1 Open a Microsoft® Word document and choose the text you want to print.



- 2 On the Microsoft® Word ribbon/standard toolbar, click .



For details on how to automatically add the text to a Label List, see "How to add the Microsoft® Word text to a Label List" described below.

How to add Microsoft Word text to the Label List

For first time use, the message "Register the data in the Label List?" is displayed. If you click Yes, new records are automatically created in the Label List and the text is added to each field shown below from next time you register the text:

The text	Added field
Date of creation	Date field
The first line	Title field
All lines including the first line	Body field
Detected ZIP/Postal code	Code field

	Date	Title	Body	Code	Memo1	Memo2	Memo3	Memo4	Memo5	Memo6
<input type="checkbox"/> 1 ▶	7/19/2007	Mr. Walter Freeman	Mr. Walter Freeman ABC Transporting Corporation 4555 Cumberland PKWY Anytown, USA 95093	95093						

If you click No in the message "Register the data in the Label List?" is displayed and want to register, go to [Tools]-[Options], and check "Automatically Record Data Imported With Add-In."

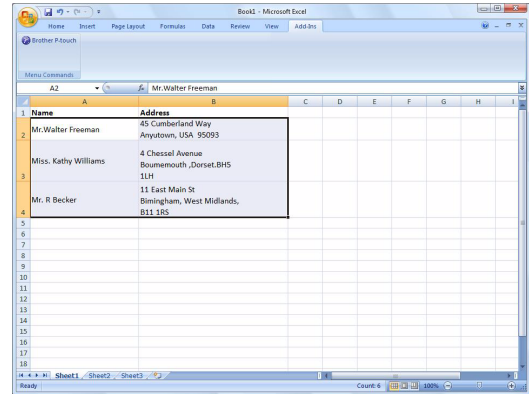
● Microsoft Excel


With the Add-In function, you can directly copy text in Microsoft® Excel to a label layout.

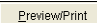
If Microsoft® Outlook® is running and Microsoft® Excel is chosen as the standard editor, you won't be able to use the Add-In function in Microsoft® Excel, Exit Microsoft® Outlook® and restart Microsoft® Excel.

Creating labels using Microsoft Excel

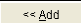
- 1 **Open a Microsoft® Excel worksheet and choose the cells that contain the text you want to include on the label.**

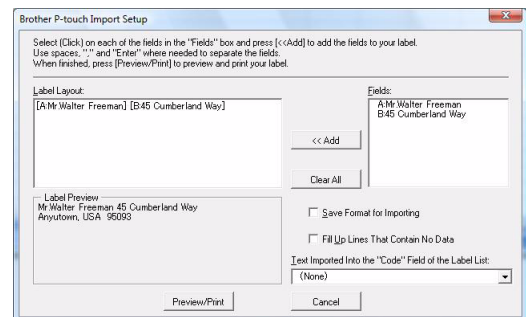


- 2 **On the Microsoft® Excel standard toolbar, click .**
The [Brother P-touch Import Setup] dialog box appears.

- 3 **In [Label Layout], make adjustments to the line feed in the cells and click .**



[Label Layout] enables you to change the way your text is displayed/printed. When you choose any listed item in the [Fields] box and click , a new field is added to the [Label Layout] box. You can enter spaces, line feeds, commas, and characters for each cell and print them on a label. You can also remove fields in this screen by highlighting the field and pressing the delete key on your keyboard.



- For details on how to automatically add the text to a Label List, see "How to add Microsoft® Excel text to a Label List" described on the page 15.
- If you want to include the data into the Code field of the Label List, choose [Text Imported Into the "Code" Field of the Label List] in the [Brother P-touch Import Setup] dialog box.

How to add the Microsoft Excel text to the Label List

For first time use, the message "Register the data in the Label List?" is displayed. If you click Yes, new records are automatically created in the Label List and the text is added to each field shown below from next time you register the text:

The text	Added field
Date of creation	Date field
The first line in the text that is specified in the Label Layout	Title field
All lines including the first line in text specified in the Label Layout	Body field
Content of cell specified in [Text Imported Into the "code" Field of the Label List]	Code field

	Date	Title	Body	Code	Memo1	Memo2	Memo3	Memo4	Memo5	Memo6
<input type="checkbox"/> 1	7/19/2007	Mr. Walter Freeman 45 Cumberland Way	Mr. Walter Freeman 45 Cumberland Way Anytown, USA 95093		Mr. Walter Freeman	45 Cumberland Way Anytown, USA 95093				
<input type="checkbox"/> 2	7/19/2007	Miss. Kathy Williams 4 Chessel Avenue	Miss. Kathy Williams 4 Chessel Avenue Bournemouth, Dorset. BH5 1LH		Miss. Kathy Williams	4 Chessel Avenue Bournemouth, Dorset. BH5 1LH				
<input type="checkbox"/> 3	7/19/2007	Mr. R Becker 11 East Main St	Mr. R Becker 11 East Main St Birmingham, West Midlands, B11 1RS		Mr. R Becker	11 East Main St Birmingham, West Midlands, B11 1RS				

If you click No in the message "Register the data in the Label List?" is displayed and want to register, go to [Tools]-[Options], and check "Automatically Record Data Imported With Add-In."

● Microsoft Outlook

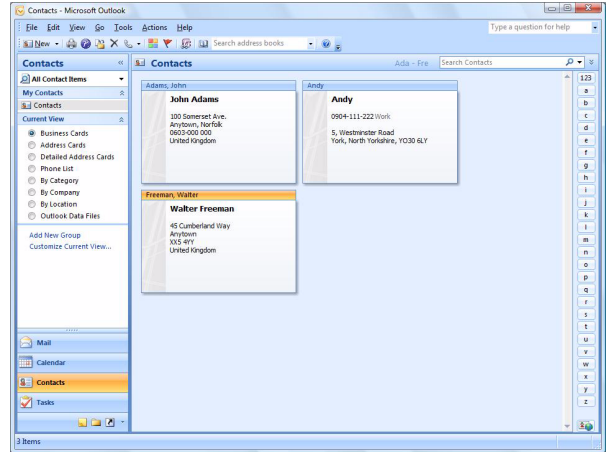
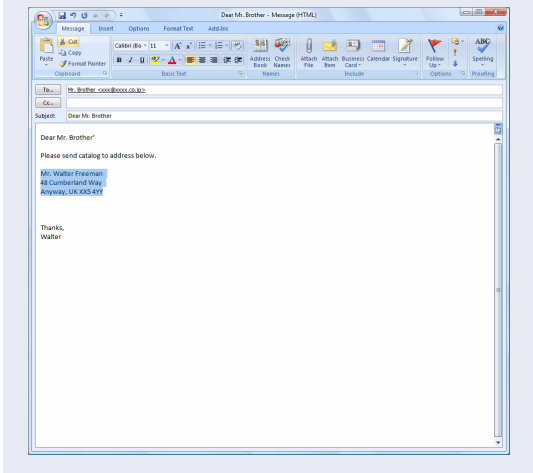
With the Add-In function, you can directly copy the text in Microsoft® Outlook® to a label layout. Items you can import are: Contacts, Calendar items, Deleted Items, Drafts, Inbox, Journal, Notes (text in the Notes dialog box is not available), Outbox, Sent Items and Tasks windows.

Creating labels using the Contacts data in Microsoft Outlook

1 Open Microsoft® Outlook® Contacts and choose the Contact information you want to include.



In Microsoft® Outlook®, you can include not only the Contact data but also the text in a message, as you can do in Microsoft® Word.



2 On the Microsoft® Outlook® standard toolbar, click .



For details on how to automatically add the text to the Label List, see "How to add the Microsoft® Outlook® text to a Label List" described on the page 17.

How to add the Microsoft Outlook text to a Label List

For first time use, the message "Register the data in the Label List?" is displayed. If you click Yes, new records are automatically created in the Label List and the text is added to each field shown below from next time you register the text:

The text	Added field
Date of creation	Date field
The first line in the text that is specified in the Label Layout	Title field
All lines including the first line in text specified in the Label Layout	Body field
Content of cell specified in [Text Imported Into the "code" Field of the Label List]	Code field

	Date	Title	Body	Code	Memo1	Memo2	Memo3	Memo4	Memo5	Memo6
<input type="checkbox"/> 1	7/19/2007	Walter Freeman	Mr. Walter Freeman 45 Cumberland Way							
<input type="checkbox"/> 2	7/19/2007	John Adams	Anytown, Norfolk100 Somerset Ave.100 Somerset Ave. Anytown, Norfolk 0603-000 000 United KingdomJohn AdamsJohn Adams							
<input type="checkbox"/> 3	7/19/2007	Andy	York, North Yorkshire5, Westminster Road5, Westminster Road York, North Yorkshire, YO30 6LYAndyAndy							

If you click No in the message "Register the data in the Label List?" is displayed and want to register, go to [Tools]-[Options], and check "Automatically Record Data Imported With Add-In."

How to Use the P-touch Address Book

This section describes the procedure for creating labels from contacts efficiently using the P-touch Address Book. The P-touch Address Book is valid for Windows only. The following is the example for Windows XP, except for step 1.

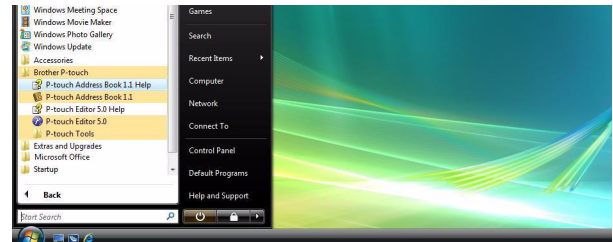
▶ Starting the P-touch Address Book

1 Click [Start]-[All Programs(Programs)]-[Brother P-touch]-[P-touch Address Book 1.1] .



You can also start the P-touch Address Book using the following methods: (Only if you created the shortcut during installation)

- Double-click the shortcut icon on the desktop.
- Click the shortcut icon on the Quick Launch bar.

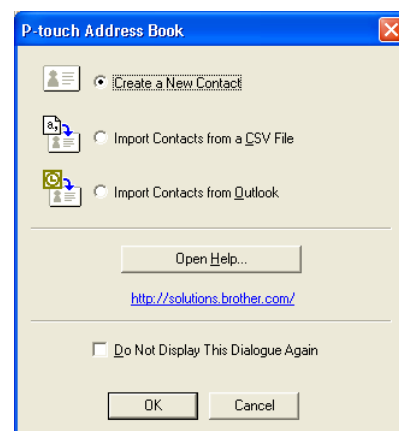


When the P-touch Address Book is launched, the [Startup] dialog box appears, letting you make settings to create new contacts, import CSV format data or Outlook® contacts, and so on.

2 In the [Startup] dialog box, specify how the P-touch Address Book works and click .

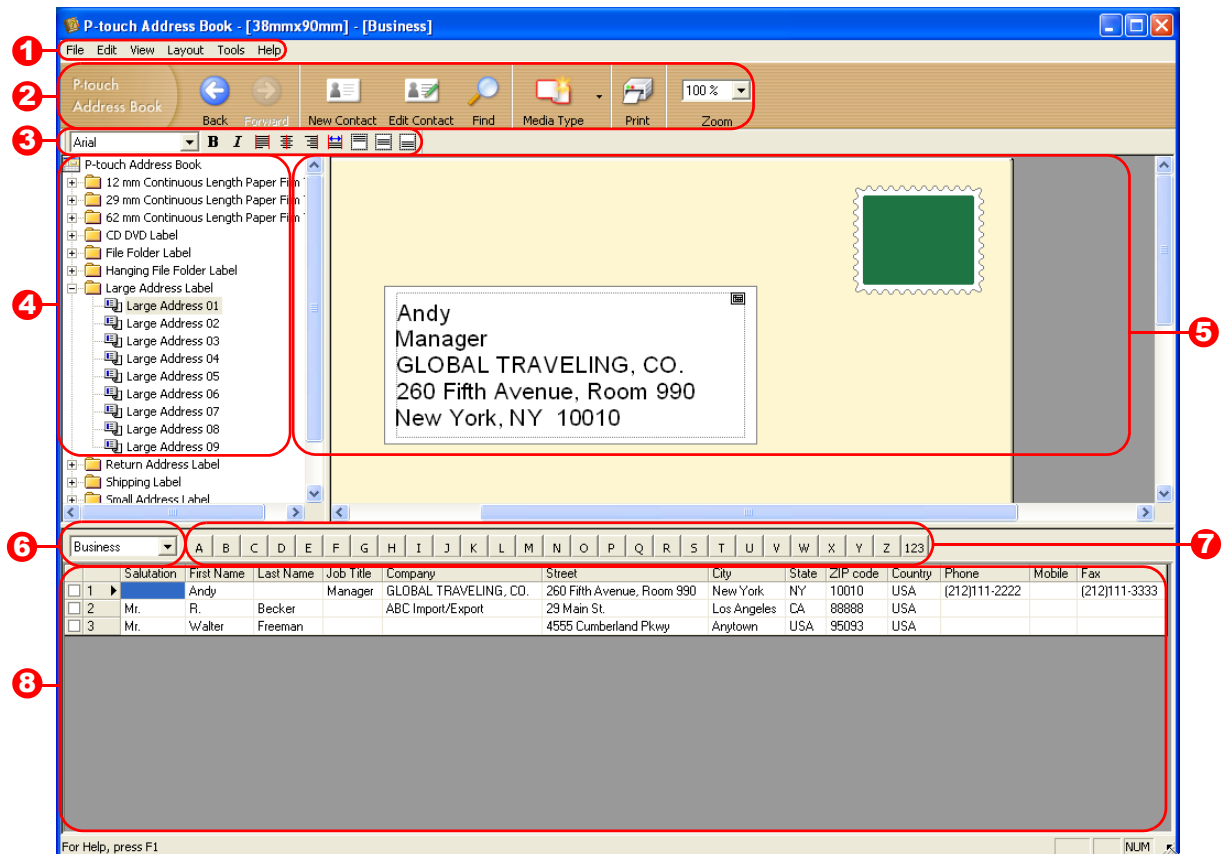
- When [Create a New Contact] is chosen, the layout window appears.
- When [Import Contacts from a CSV File] or [Import Contacts from Outlook] is chosen, you can import contacts in other formats.
- Click to open the P-touch Address Book Help files.

The P-touch Address Book Help offers detailed information on available features and explains how to use the P-touch Address Book.



Layout window

The layout window consists of the following eight sections:



1 Menu bar

Commands are categorized under each menu (File, Edit, View, and Insert, etc.) by function.

2 Standard toolbar

A group of frequently used commands (such as New Contact, Edit Contact, Find, Print, etc.) are provided in this toolbar.

3 Text toolbar

Used to adjust text attributes such as font size and alignment for text formatting.

4 Layout style selection view

Displays layout styles stored in the folder.

5 Layout work area

This area is used to display or edit a layout that uses the layout style in the layout style selection view.

6 Contact list combo box

Displays the contact list that is currently specified. You can choose from [Personal], [Business], [Other1], [Other2] and [Other3].

7 Index tab

You can search within the field in Record View. Click [Tools]-[Sort] to open the [Sort] dialog box, and specify the field to be searched using [Key1].

8 Record View

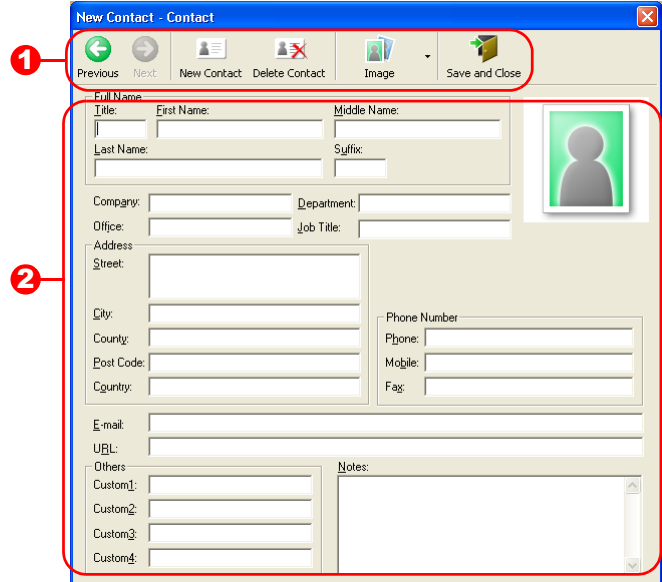
The Contact data is displayed in each field. The data can also be edited (added to, deleted or modified).

▶ Creating a New Contact

This section explains how to create a new contact.







- 1 Click [File]-[New Contact]. Or, click  .
The [New Contact] dialog box appears.

- 2 Enter data for each item.




- 1 New Contact form toolbar

The following commands are categorized in the menu:

Icon	Button name	Function
	Previous	Displays the previous contact.
	Next	Displays the next contact.
	New Contact	Displays the New Contact form window for a new contact.
	Delete Contact	Deletes the contact that is currently chosen.
	Image	Allows you to insert an image for a contact from a file or a camera currently connected to the computer. The following file types are supported: <ul style="list-style-type: none"> • Bitmap (*.bmp, *.dib) • JPEG file (*.jpg, *.jpeg) • TIFF file (uncompressed) (*.tif) • GIF file (*.gif) • Icon (*.ico) • Windows Meta File (*.wmf, *.emf) (*Image adjustment is not allowed.) • PNG file (*.png)
	Save and Close	Saves the contact and closes the [New Contact] dialog box.

- 2 Contact form

Used to enter each item such as name, address, phone number, company information, and E-mail address for the new contact.

- 3 When you finish entering the data, click  to store.

How to Use P-touch Library

P-touch Library: This application allows you to manage P-touch label templates and other data on the computer. You can print a label from the P-touch Library using the machine.

▶ Starting up the P-touch Library

You can start up the P-touch Library and edit and print labels.

- 1 Click the [Start] button, then choose [All programs (Programs)] - [Brother P-touch] - [P-touch Tools] - [P-touch Library 2.1].

The P-touch Library starts up.

● Opening and editing data

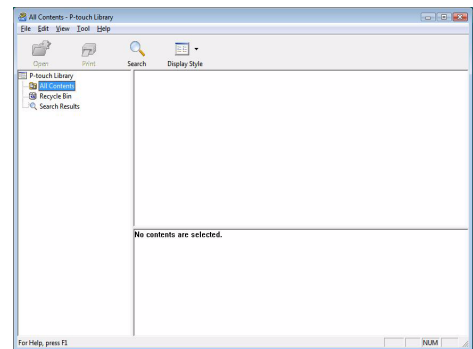
- 1 Choose the data you want to edit, then

click  .

The application associated with the data is opened and you can edit the data.



The application that starts up depends on the data. For example, for a P-touch template, P-touch Editor starts up.

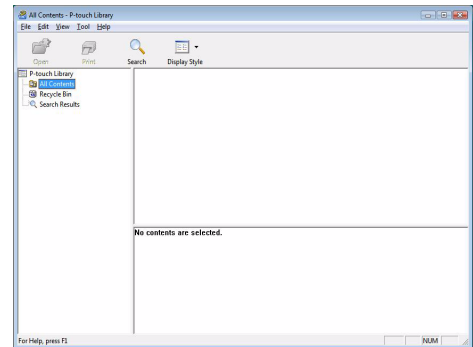


● Printing labels

- 1 Choose the label templates you want to print,

then click  .

The label is printed by the connected printer.

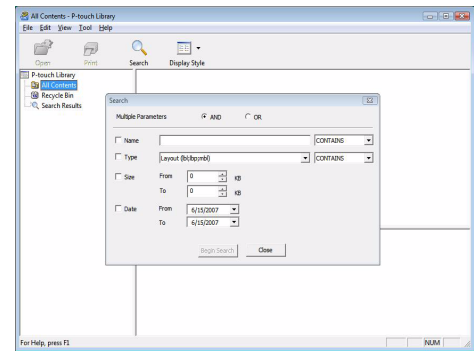


▶ Searching labels

You can search label templates registered in the P-touch Library.



The [Search] dialog box is displayed.



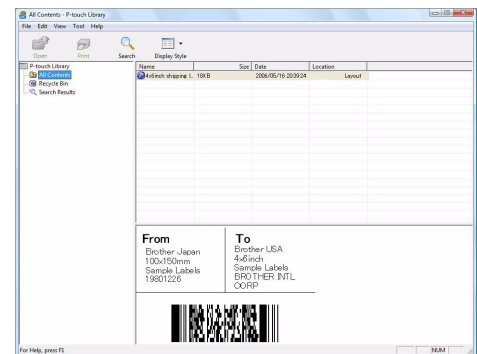
2 Check the items to be used as search conditions and set the search items.

The search items that can be set are as follows.

Settings	Details
Multiple Parameters	This sets the method for combining multiple search items. If you choose AND, files are searched for that satisfy all the conditions. If you choose OR, files are searched for that satisfy any one of the conditions.
Name	Inputs the data name to search for.
Type	Chooses the data type to search for.
Size	Sets the data size to search for.
Date	Sets the date and time at which the data to search for was last modified.

3 Click [Search Results].

The search is started and the search results are displayed.



- The search results can be checked in the Search Results folder view.
- You can register the data in the P-touch Library by dragging and dropping to the All contents folder or its list view. To have label templates created with P-touch Editor automatically registered in the P-touch Library, use the following method.
 1. From the P-touch Editor menu, choose [Tools] - [Options].
 2. In the [Options] dialog box [General] tab, click [Registration Settings].
 3. Choose the timing for registering label templates created with P-touch Editor, then click [OK].

How to use the P-touch Editor for Mac



This section gives an overview of P-touch Editor. See the P-touch Editor Help for details.

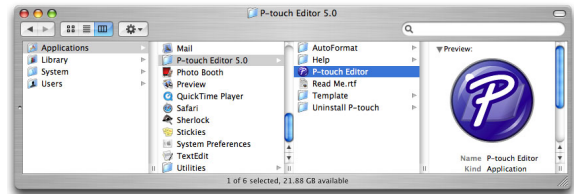
▶ Starting the P-touch Editor

- 1** Double click the [Applications] and then [P-touch Editor 5.0].



If an Alias has been created, double-click the Alias.

The Layout Window is displayed.

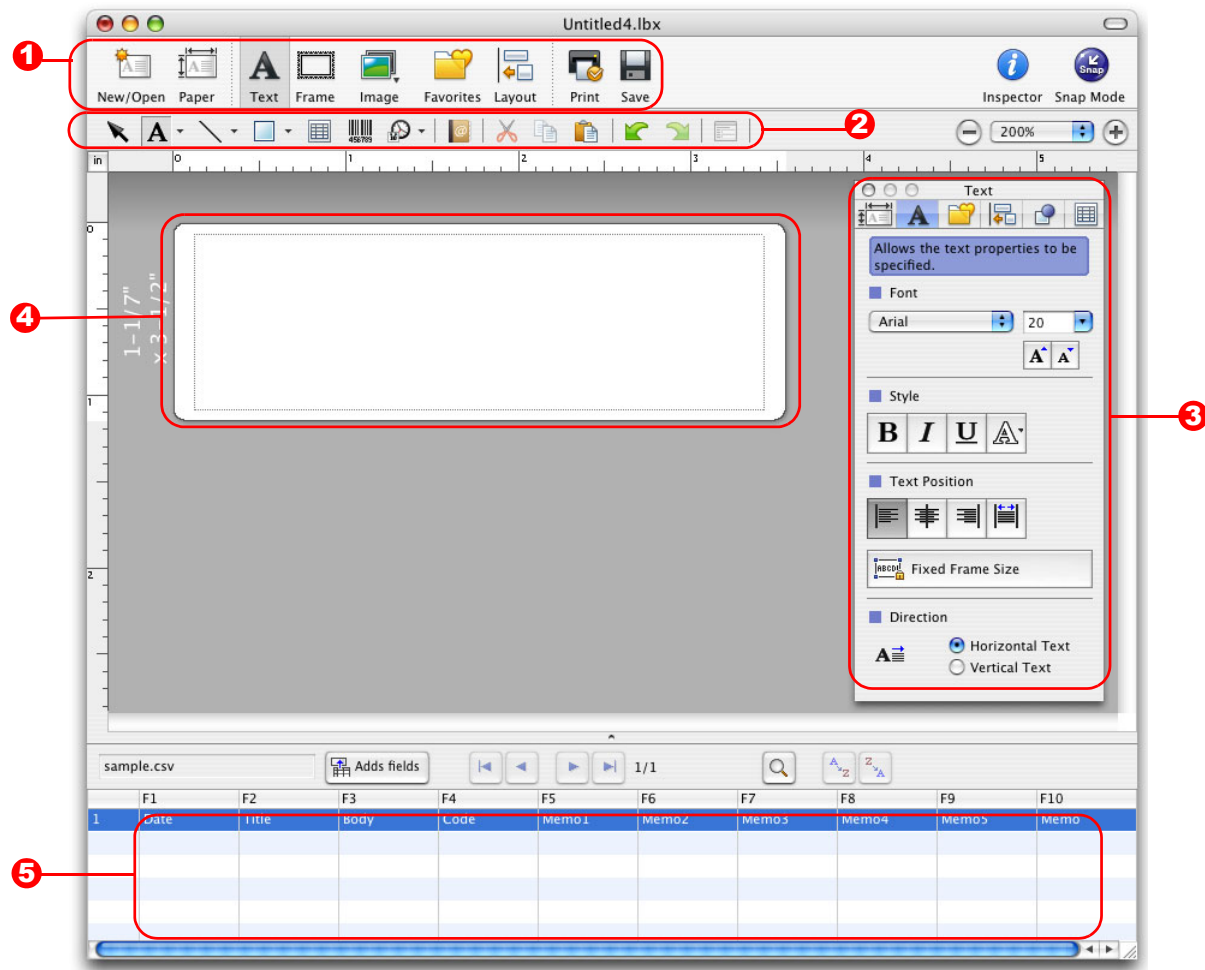


Layout Window

Standard Mode

This mode provides easy label creation with texts and images.

The layout window consists of the following sections:



1 Command bar

The command bar contains the New/Open, Paper, Text, Frame, Image, etc.

2 Draw/Edit toolbar

Provides tools for choosing an object, entering text, drawing graphics, etc.

3 Inspector

You can easily insert and format text, image, etc.

4 Layout window

The layout window is used to display and edit objects.

5 Database window

Displays a database.



- The [View] menu allows you to show/hide the toolbars and windows.
- See the P-touch Editor Help for details.

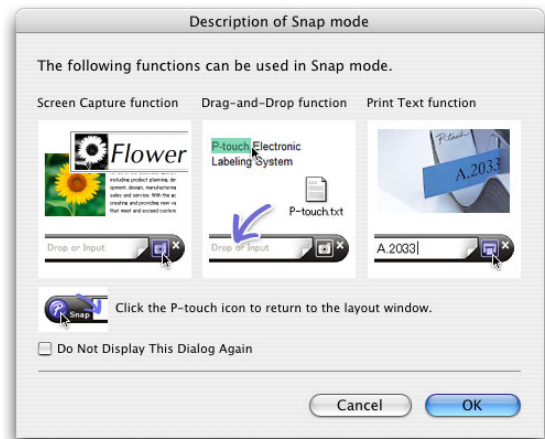
■ Snap Mode

With this mode, you can capture the screen, print it as image, and save it for future use. To start the snap mode, follow the steps below.

1 When you click [Snap Mode], the description of the snap mode dialog appears. Click .



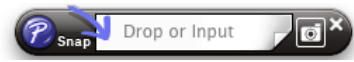
If you put a checkmark on the [Do Not Display This Dialog Again], you can go to the snap mode directly from next time.



2 The snap mode appears.



See the P-touch Editor Help for details.

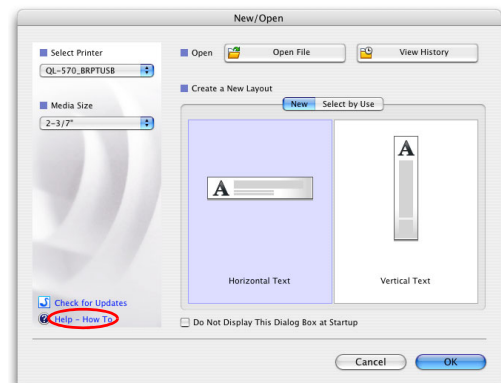


▶ Start P-touch Editor Help

This section explains how to start P-touch Editor Help for Mac. The following is the example for Mac OS® X 10.4.9.

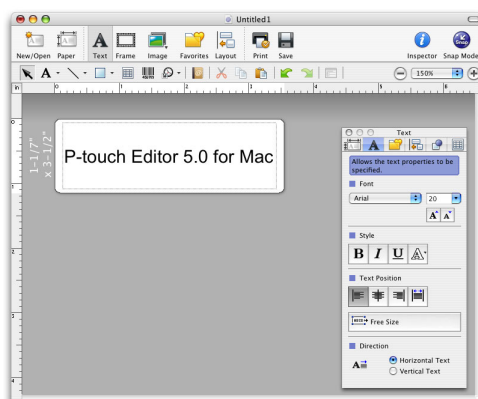
■ Start from New/Open dialog

In the New/Open dialog, click **Help-How To**.



■ Start from P-touch Editor

To start the P-touch Editor Help, click Help and choose P-touch Editor Help.



Printing Directly from Other Applications

You can use this machine to print directly from most Windows® applications, by installing the printer driver.



Because the paper size for this machine is different from other regular printers, you may not be able to print even after installing the driver and application software, unless the application software allows the correct label size to be set.

▶ Setting the Printer Driver

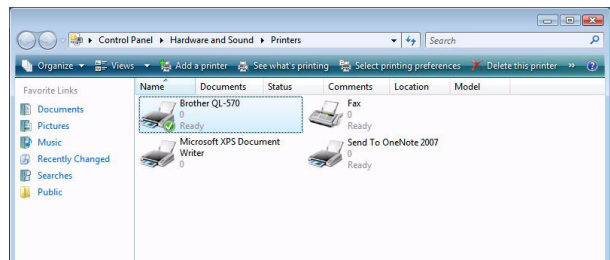
- 1** From [Control Panel], go to [Hardware and Internet] and open [Printers].



For details, see Windows® Help.

- 2** Choose "Brother QL-570", and click [Select printing preferences].

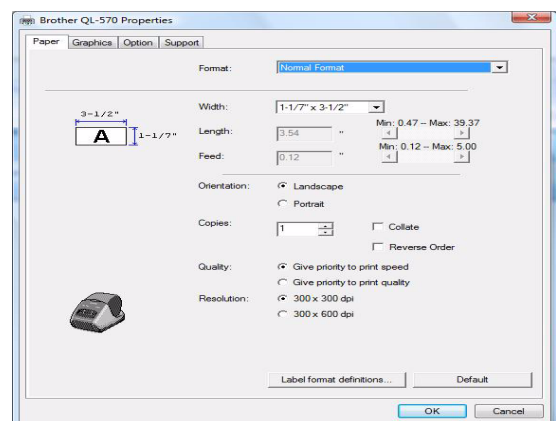
The [Brother QL-570 printing preferences] dialog box appears.



- 3** Choose each item and click .

- [Paper] Tab

This tab is used to set the Format and Width.

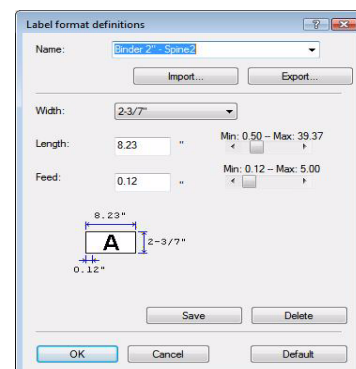


You can change the Label Format or create a new Label Format from the [Label Format definitions] dialog box which appears by clicking

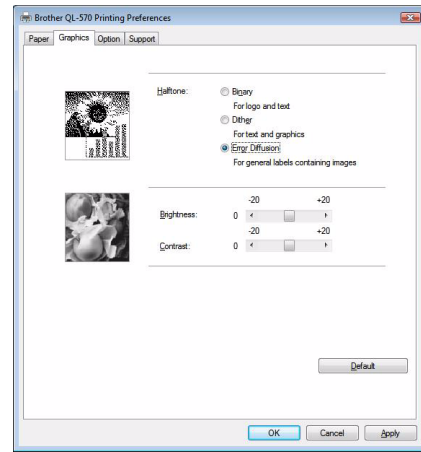
.

Set the format name ("Name") and size ("Width", "Length", and "Feed"), and click

.



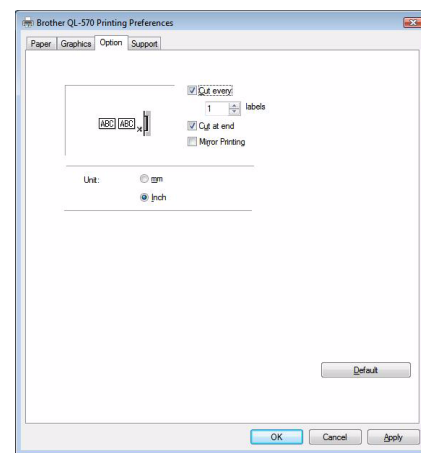
- [Graphics] Tab
You can set "Halftone", "Brightness", and "Contrast" in this tab.



- [Option] Tab
You can set "Auto cut" with number of labels between cuts, "Mirror Printing", "Cut at end", and "Unit" in this tab.



The cutting options will vary according to the model.



4 Close the [Printers] window.

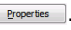
▶ Printing from Other Applications

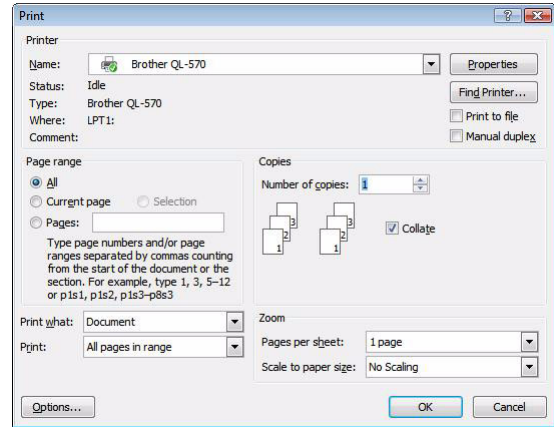
We will use Microsoft® Word as an example.

1 Click and .

The [Print] dialog box appears.

2 Choose "Brother QL-570".

You can change the settings of the Printer Driver from the [Properties] dialog box which appears by clicking .



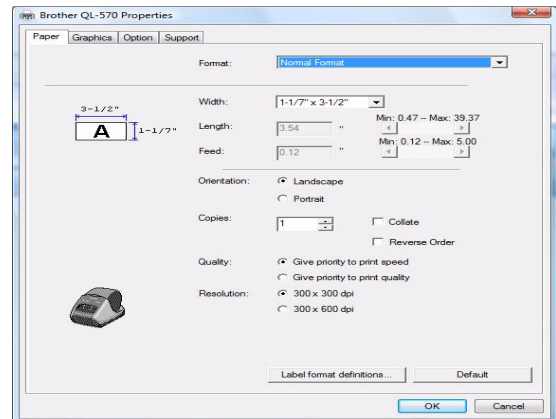
3 Click , and close the [Print] dialog box.

4 Click [Page Layout] and a mark on the right bottom of the Page Setup.

The [Page Setup] dialog box appears.

5 Click the [Paper] tab, and choose the paper size that you want to print.

You can also choose the Label Format that you have added in →Page 26. Set page margins in the [Margins] tab as well.



6 Click .

The size of the Microsoft® Word window is adjusted to the paper size that you have just chosen. Edit the document as needed.

7 Click .

The specified labels are printed.

Uninstalling Software

This section describes how to uninstall the software and printer driver.

► For Windows

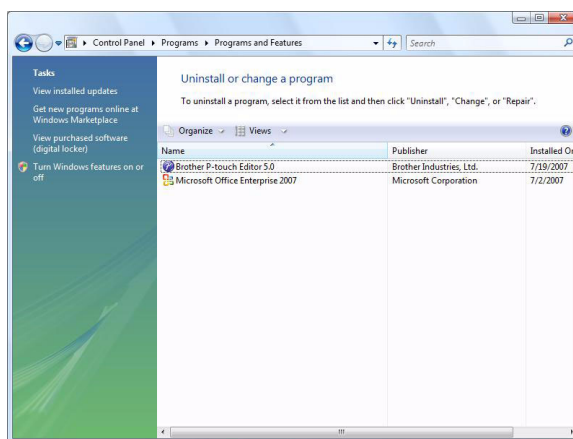
● Uninstalling P-touch Editor

1 From [Control Panel], go to [Programs] and open [Uninstall a program].

The [Uninstall or change a program] dialog appears.

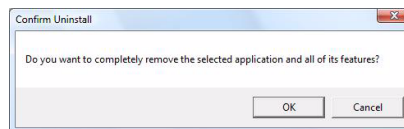
2 Choose "Brother P-touch Editor 5.0", and click .

The [Programs and Features] dialog box appears.



3 Click .

The uninstall operation starts. After the software and printer driver are removed from your computer, the [Maintenance Complete] dialog box appears.



4 Close the [Programs and Features] dialog.

P-touch Editor has been uninstalled.



The P-touch Address Book, and Software User's Guide (PDF) can also be uninstalled by following the same procedure.

● Uninstalling the Printer Driver

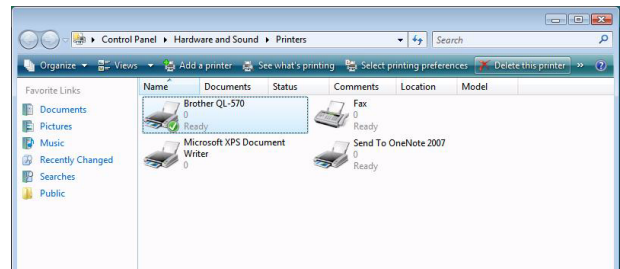
1 Turn off the Brother QL-570.

2 From [Control Panel], go to [Hardware and Sound] and open [Printers].



For details, see Windows® Help.

3 Choose "Brother QL-570", and click [Delete this printer].



4 Close the [Printers] window.

The printer driver has been uninstalled.

▶ For Mac

● Uninstalling P-touch Editor

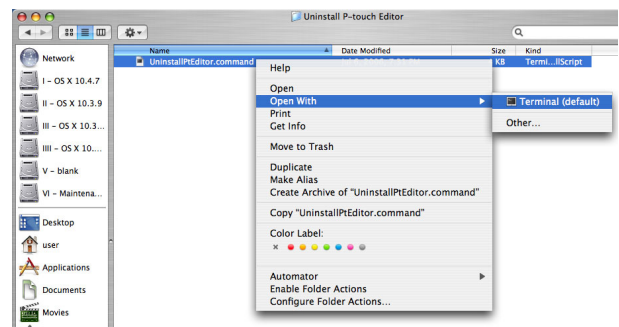
1 On the drive where P-touch Editor is installed, double-click the [Applications] folder-[P-touch Editor 5.0] folder-[Uninstall P-touch] folder-[UninstallPtEditor.command]. [Terminal] window appears, and then uninstall operation starts.



Administrator rights is required for the uninstall operation.



In case [Terminal] window doesn't appear by double-clicking the [UninstallPtEditor.command], right click (or control key + click) the [UninstallPtEditor.command], the context menu appears. Open with the [terminal] window from the context menu.




2 Click .



```
Completed Command
Last login: Fri Jul 7 20:46:21 on console
Welcome to Darwin!
PHCPMAC01-Power-Mac-G4:~ user$ /Applications/P-touch\ Editor\ 3.2/Uninstall\ P-t
ouch/UninstallPEditor.command; exit
logout
[Process completed]
```

3 Delete [Applications]-[P-touch Editor 5.0] folder.

 Before you delete the [P-touch Editor 5.0] folder, please check if any necessary files are saved in it.

P-touch Editor has been uninstalled.

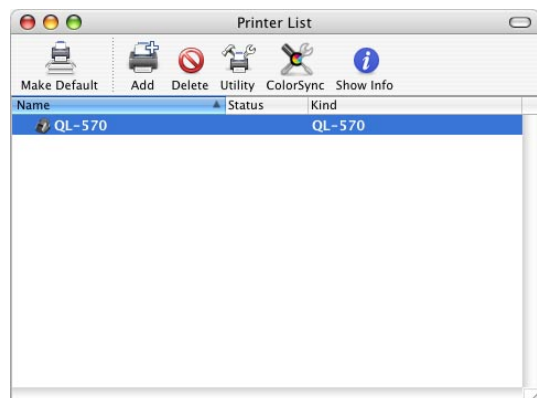
● Uninstalling the Printer Driver

1 Turn off the Brother QL-570.

2 Double-click the drive where Mac OS® X is installed, and double-click [Applications]-[Utilities]-[Printer Setup Utility].

The [Printer List] dialog box appears.

3 Choose "QL-570", and click (Delete).



4 Close the [Printer List] dialog box.

The printer driver has been uninstalled.

LED Lamp

LED lamp on the QL-570 indicates the current operating condition.

Lamp	Condition
Not lighting ○	Power is OFF.
Green lamp is lighting ●	Power is ON.
Orange lamp is lighting ●	The roll cover is opening. Close the roll cover properly.
Orange lamp is flashing ●—●○—○	Cooling (Waiting for temperature of print head to lower)
Red lamp is flashing ●	Indicates one of the following errors. <ul style="list-style-type: none">• Label sensor error (End of DK Roll or label jam)• Incorrect DK Roll installed• Transmission error

Maintenance

Maintenance of the machine must be done as needed. However, some environments require that maintenance must be done more frequently (e.g. in dusty conditions).

► Print head maintenance

The DK Roll (thermal recording paper type) used with the machine is designed to clean the print head automatically. When the DK Roll passes the print head during printing and label feeding, the print head is cleaned. If the print head is not cleaned enough, use cotton swab and wipe the head.

► Roller maintenance

Clean the roller using the cleaning sheet (separately available).

The machine contains only one cleaning sheet. To purchase additional cleaning sheets, refer to ► "Accessories (For USA Only)" in page 20 of Setup & Operation Guide as needed.



When doing maintenance on the roller, be sure to use the cleaning sheet exclusive for this machine only.

If using other cleaning sheet, the surface of roller may be scratched or it may cause a malfunction.

1 Turn the Brother QL-570 off.

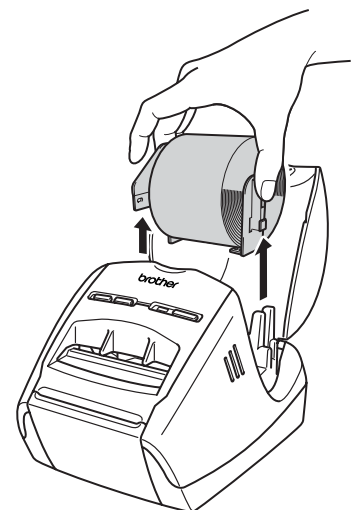
2 Hold the DK Roll compartment cover at the front of the Brother QL-570 and firmly lift up to open the cover.



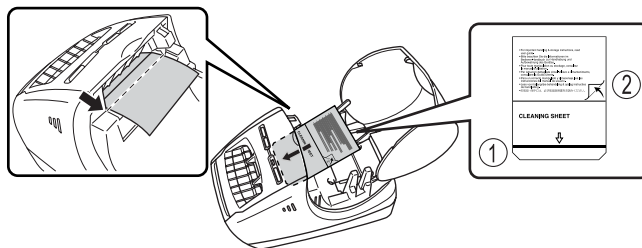
3 Pull up the roll release lever and remove the DK Roll.



- Make sure that the spool arms are inserted firmly in the spool guides on the left and right.
- Insert the spool with the DK Roll located on the right hand side of the Brother QL-570.



- 4** Remove the backing paper ② and insert the edge ① of cleaning sheet into the printing unit until the area pointed with arrow in the diagram below.



- Insert the sheet without removing the ① part of sheet.
- Check that the printing surface of cleaning sheet is upward.

- 5** Close the DK Roll compartment cover and press the ON/OFF button (⏻) to turn the Brother QL-570 on.

- 6** Press the Feed button for more than one second.

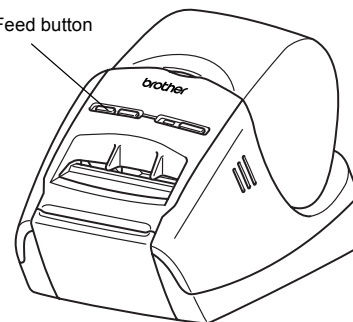
The roller spins by 4" (10 cm).

The adhesive face of cleaning sheet removes the stain or dust on the roller.



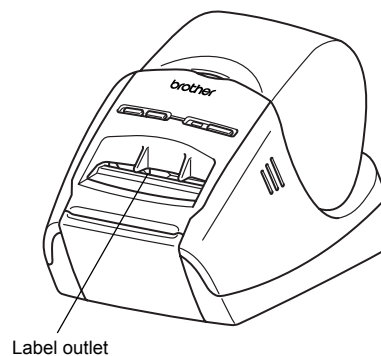
- If not pressing the Feed button for more than one second, the roller spins only 1/3" (8 mm).
- Dispose the cleaning sheet after use.

Feed button



▶ Label outlet maintenance

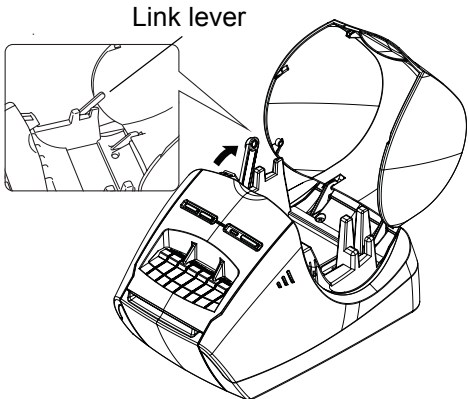
When the glue is attached on the label outlet and the machine jam a label, pull out the power plug from the outlet and clean it up with cloth dipped into ethanol or isopropyl alcohol.



Troubleshooting

If the problems occur while using this machine, the following may help you to solve the problems.

► Potential types of problems

Problem	Solution
<ul style="list-style-type: none"> The QL-570 does not print, or a printing error is received. 	<ul style="list-style-type: none"> Is the USB cable loose? Check that the USB cable is connected correctly. Is the DK Roll installed correctly? If not, remove the DK Rolls and reinstall. Is there enough roll remaining? Check that there is enough roll remaining. Is the DK Roll compartment cover open? Check that the DK Roll compartment cover is closed. Is print error or transmission error occurred? Turn off the Brother QL-570 and on again. If the problem is still occurred, contact Brother Customer Service at 1-877-4-P-touch.
<ul style="list-style-type: none"> The power button does not light up. 	<ul style="list-style-type: none"> Is the power cord plugged correctly? Check that the power cord is plugged. If plugged correctly, try plugging it to another electrical outlet. * If the power button still does not light up, contact Brother Customer Service at 1-877-4-P-touch.
<ul style="list-style-type: none"> The printed label contains streaks or poor quality characters, or the label is not fed correctly. 	<ul style="list-style-type: none"> Is the print head or roller dirty? While the print head generally remains clean under normal use, lint or dirt from the roller may become stuck on the printer head. If this occurs, clean the roller. See → "Roller maintenance" in page 33.
<ul style="list-style-type: none"> A data transmission error appears on the personal computer. 	<ul style="list-style-type: none"> Is the correct port chosen? Check that the correct port is chosen from the "Print to the following port" list in the Printer Properties dialog box. Is the QL-570 in cooling mode (the LED lamp is flashing in orange)? Wait until the LED lamp stops flashing and then try printing again.
<ul style="list-style-type: none"> Labels are jammed in the cutter or are not ejected correctly after printing. 	<ul style="list-style-type: none"> Is there dirt or lint on the roller preventing it from rolling freely? Use a Cleaning Sheet to clean the roller. For details, see → "Roller maintenance" in page 33.
<ul style="list-style-type: none"> Layout style is not updated when Add-in is still activated and a new label roll is installed. 	<ul style="list-style-type: none"> Is new label roll installed before activating the P-touch Add-In (The P-touch function is added to your standard Microsoft toolbar)? Exit the P-touch Add-In, load the 2nd label roll type, reactivate the P-touch Add-in, choose "Select Layout", and then verify the layout.
<ul style="list-style-type: none"> The icon of P-touch Add-In is not displayed on Microsoft® Word. 	<ul style="list-style-type: none"> Is Microsoft® Outlook® started up? Is Microsoft® Word chosen for the editor usually used for Microsoft® Outlook®? Due to limitation of the program, the Add-In of Microsoft® Word is unable to use with above settings. Quit Microsoft® Outlook®, and restart Microsoft® Word.
<ul style="list-style-type: none"> The DK Roll compartment cover does not close. 	<ul style="list-style-type: none"> Is the DK Roll installed properly? Is the link lever removed? Set the link lever properly. 
<ul style="list-style-type: none"> Link lever is removed. 	<ul style="list-style-type: none"> Set the link lever properly.

Specifications

▶ Product Specifications

Items		Specifications
Display		LED lamp (green, red, orange)
Printing	Printing method	Direct thermal printing via thermal head
	Printing speed	Max. 4.3 inch (110 mm)/sec, Max. 68 labels/min. (Standard Address Labels)
	Print head	300 dpi/720 dot
	Maximum Printing Width	2.3 inch (59 mm)
	Minimum printing length	0.5 inch (12.7 mm)
Buttons		ON/OFF button (⏻) FEED button CUT button
Interface		USB
Power source		120V AC 60 Hz 1.7 A
Dimensions		5.2" (133 mm) × 8.2" (208 mm) × 5.6" (143 mm)
Weight		Approx. 2.5 lb. (1.1 kg) (Without DK Rolls)
Cutter		Durable automatic cutter

▶ Operating Environment

Items		Specifications
OS	Windows®	Windows® 2000 Professional/XP *1 / Windows Vista™
	Mac®	Mac OS® X 10.3.9 ~ 10.4.10
Interface	Windows®	USB port (USB Spec. 1.1 or 2.0 protocol)
	Mac®	USB port (USB Spec. 1.1 or 2.0 protocol)
Hard Drive	Windows®	Over 70 MB of available space *2
	Mac®	Over 100 MB of available space *2
Memory	Windows®	Windows® 2000 Professional/XP: More than 128 MB*2 Windows Vista™: More than 512 MB*2
	Mac®	More than 128 MB
Monitor	Windows®	SVGA, high color or higher graphics card
	Mac®	More than 256 colors
Others		CD-ROM drive
Operating Temperature		50°F to 95 °F (10°C to 35°C)
Operating Humidity		20% to 80% (without condensation)

*1 The computer should meet Microsoft®'s recommendations for the OS installed.

*2 Required available space when installing the software with all of the options.