



Kacia Hosmer

For those of you who especially want to try your hand at quilting, this machine allows you to learn the ropes, try new techniques...and you still have all of the other features and capabilities of the ScanNCut machine as well! Today, I want to walk through the creation of a quilt block using the built-in quilt patterns that are featured on the ScanNCut machine.*

*If you don't have a model that includes the quilt patterns, have no fear: they are available for purchase!

MATERIALS:

ScanNCut Machine, Standard Mat, Fabric Support Sheet, Standard Blade, Pen Holder and Fabric Pen, Quilting Cotton, Sewing Machine and Supplies

There are so many quilt block patterns to choose from, ranging from very basic to pretty complicated! The machine does all the calculating for you - so even resizing the blocks is done with just a few button clicks.



step 1.

Begin by pulling up the quilt patterns on your ScanNCut machine. They are the first icons on the second page of the built-in patterns. If you've purchased them, they will be on a USB stick. After clicking that first icon, you will see "Chapters" of patterns (within each additional icon are pages of corresponding patterns).



I told you, there are a lot of patterns! You won't get bored quickly!

step 2. Find the pattern you'd like to use and select it.



step 3. After selecting the block, you will choose the final size of your quilt block.



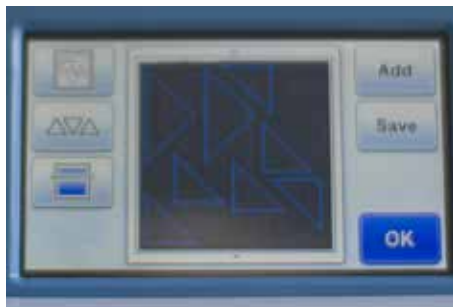
step 4. The quilt block will be then broken down into the various pieces needed to create it. It will default to the colors in the image, but remember - you can have fun and cut your pattern from any fabrics you'd like!



step 5. Select the shape you'd like to draw and cut first.



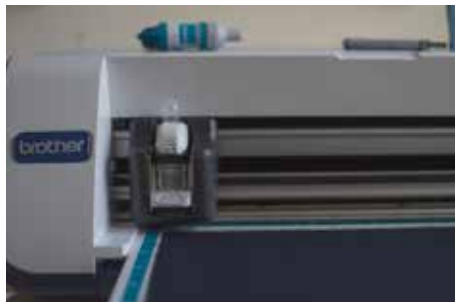
step 6. Set up your fabric to be cut. "Background Scan" your fabric and arrange your quilt pieces on the fabric space. If you have space, you can add other quilt pieces by clicking the "Add" button, found in the top right corner.



step 7. Place your fabric pen into the pen holder. *(I am using the black permanent pen for this tutorial, just so it's easier to see the seam allowance lines in the photos.)*



step 8. Load your standard mat into the ScanNCut machine and draw your seam allowances.



step 9. This next step is where many people get tripped up. After you draw the seam allowance, the ScanNCut will ask if you'd like to "Select the next part" or "Finish."

- Select the next part: This option will erase what you currently have displayed and arranged on your standard mat. It will go back to the piece selection for your quilt block, so that you can choose the next pieces to cut.
- Finish: This option will bring you back to your current arrangement, so that you can "Finish" those pieces by cutting them out.

Tip: Always save your current arrangement in case you click "Select next part" before cutting your quilt pieces. That way, you can re-open that file and cut out the pieces.

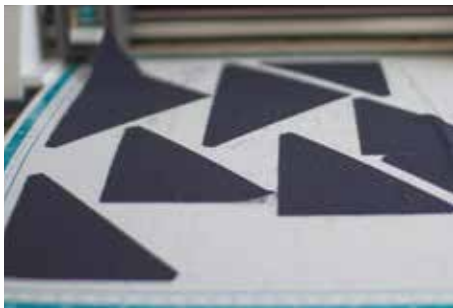


step 10. My favorite settings for cutting quilting cotton:

- Speed: 1
- Pressure: 5-6
- Blade: 2-4



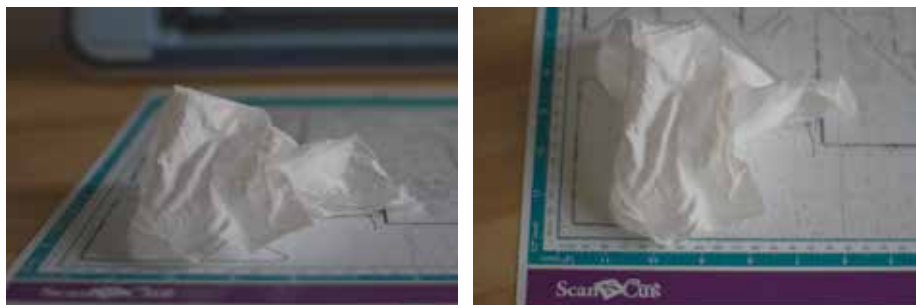
step 11. Using your spatula, carefully lift the pieces from your standard mat.



step 12. Continue these steps until the block pieces have all been marked and cut from your fabric.



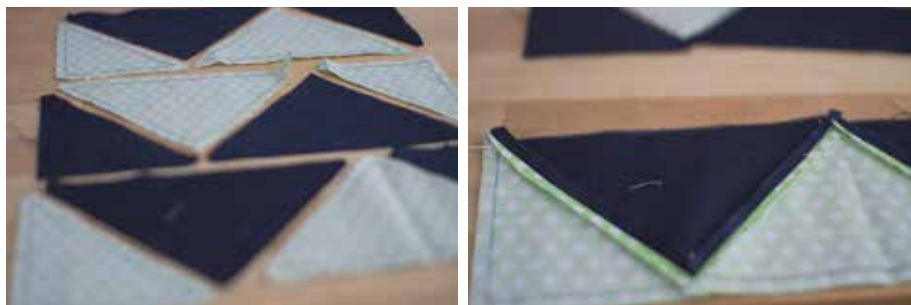
step 13. *Tip: Use a fragrance and alcohol-free baby wipe to remove the threads and debris from your standard mat. Allow it to dry and reuse!*



When you have your quilt pieces cut, you can begin piecing them together!



Using a 1/4" foot, sew just inside of the seam allowance you've marked on your fabric. By sewing this scant 1/4" seam, you will be eventually have a true 1/4" seam after pressing.



For this specific quilt block, piece each row and then sew the rows together. I always prefer pressing my seams open, unless it doesn't work for the specific pattern (like curves...which we will get to next!).



You did it!

Now let's talk about something that scares some people when it comes to quilting...curves!

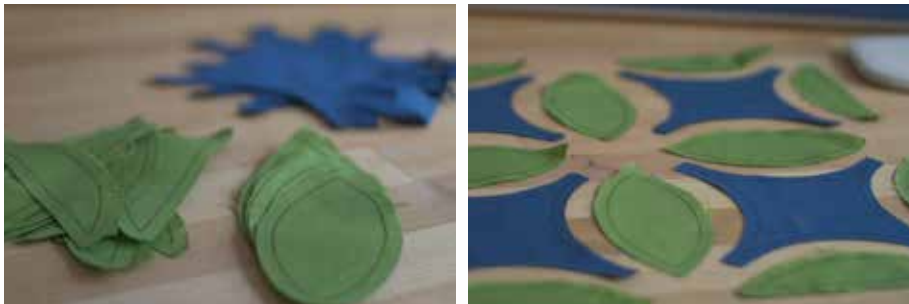


Curves are among my favorite shapes to quilt. They're kind of like magic! They're awkward to pin and a little weird to sew...but then you press them flat, and voila! Curves...and endless possibilities!

step 1. Begin by following the steps above. Mark your seam allowances and cut each piece out from your quilting cotton.



step 2. When you've completed all of the pieces, it's time to begin pinning. I typically don't pin when I piece quilts with straight seams, but I almost always pin with curves. I know there are special feet you can use and other tricks, but I just bust out my tried-and-true pins.



- step 3.** The great thing about the ScanNCut is that it marks your seam allowances, so with curved seams (and things like Y-seams) it makes it very easy to line up and sew! Typically, I first match end seams and a middle point with a pin.



Work your way along the seam. You will see it curve to one direction (as shown below).



-
- step 4.** Sew a scan 1/4" seam along the pinned seam. I like to allow the curve to go up as I sew (if that makes sense).



-
- step 5.** You will be left with a seam like the one you see above.



step 6. Press the seam flat and continue this process until the entire quilt block is completed!

